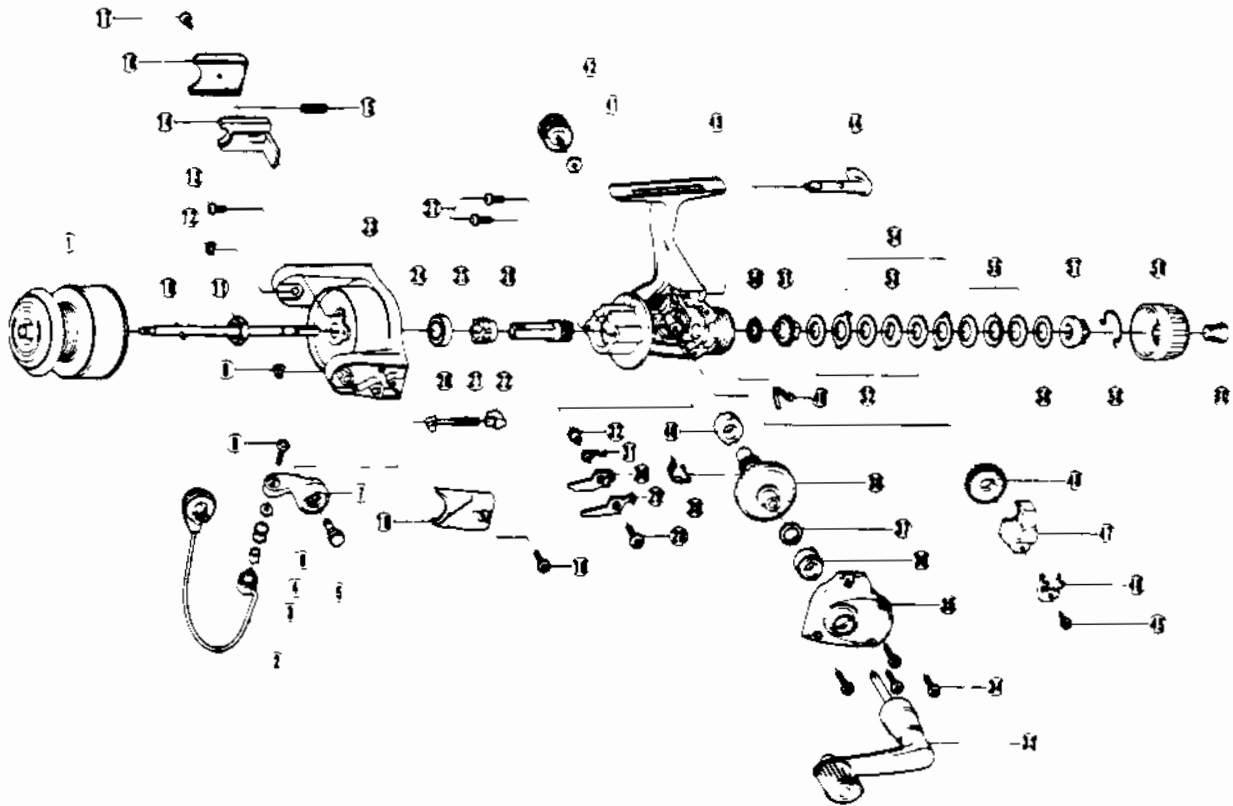


QUANTUM LS4



Key No.	Part No.	Description
1	JU321-6	SPOOL ASSEMBLY
2	GU347-8	BAIL ASSEMBLY
3	MT016-2	LINE ROLLER BUSHING
4	MT004	LINE ROLLER
5	GU051-4	ARM LEVER PIN
6	GU105-7	WASHER-LINE ROLLER
8	KQ108	BAIL SCREW
9	KQ034	E-CLIP
10	JU315-3	MAIN SHAFT
11	GU006-2	ROTOR NUT
12	KQ034	E-CLIP
13	GU077-4	SCREW ROTOR NUT LOCK
14	KU019	KICK LEVER
15	KQ049	KICK LEVER SPRING
16	KU046	KICK LEVER COVER
17	GU077-2	SCREW
18	GU077-2	SCREW
19	PU087	ARM LEVER SP/COVER
20	QL031	SPRING SHAFT
22	QL020	SPRING HOLDER
23	KU009-2	ROTOR
24	AQ028-6	BALL BEARING
25	JU060	RATCHET GEAR
26	JU011	PINION GEAR
27	JU077	SCREW BEARING
28	GU077-5	SCREW-STOPPER
29	JU063	STOPPER A
30	JU074	STOPPER B
31	JU061	STOPPER SPRING

WWW.REELDR.COM

Key No.	Part No.	Description
32	GU091-2	STOPPER BUSHING
34	JU057	SCREW-BODY COVER
35	KU023-2	BODY COVER
36	JU027	BODY COVER BUSHING
37	GU105-13	D/G ADJ. WASHER
40	JU027	BODY COVER BUSHING
41	GU105	WASHER-HANDLE SCREW CAP
42	GU073	HANDLE SCREW CAP
43	KU001-2	BODY
44	GU090	STOPPER LEVER
45	JU100	SCREW-OSC. RETAINER
46	JU078	RETAINER-OSC. SLIDER
47	KU025	OSC. SLIDER
48	KU053	OSCILLATION GEAR
49	GU089	STOPPER LEVER SPRING
50	GU105-17	WASHER-DRAG FRICTION
51	KU075	METAL GEAR
52	GU105-18	WASHER-DRAG B
53	JU080	WASHER-DRAG D
54	JU081	WASHER-DRAG A
55	JU043	DRAG SPRING
56	GU105-19	DRAG ADJ. WASHER
57	JU066	DRAG NUT
58	JU083	DRAG CLICK CLAW
59	JU032	DRAG KNOB
60	JU101	DRAG KNOB SCREW

Prices subject to change without notice. Prices do not include postage and handling.

PLEASE ORDER BY PART NUMBER

Rev. 5/93

Zebco Division Brunswick Corporation, Box 270, Tulsa, OK 74101 USA 918-836-5581

