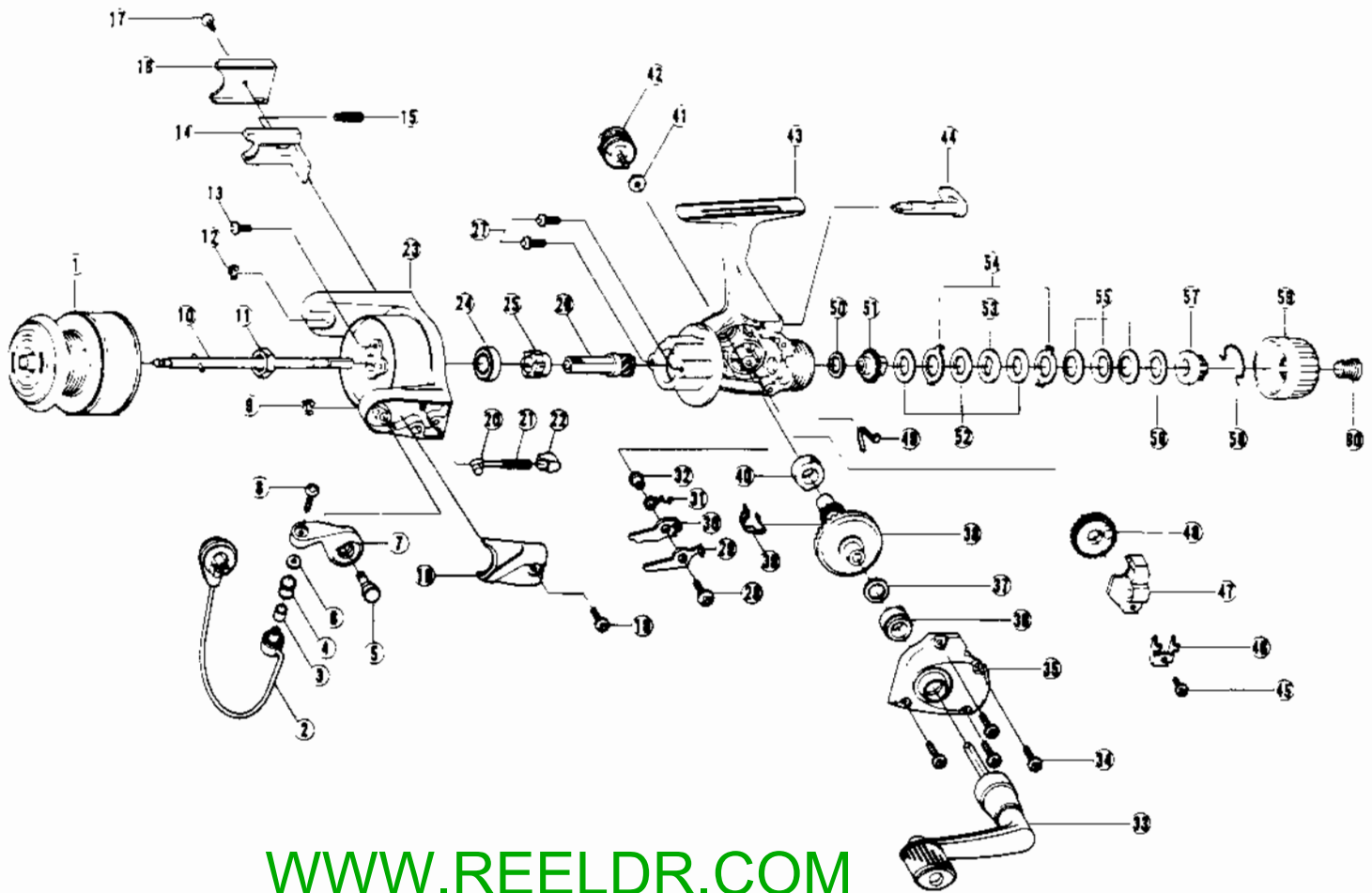


# QUANTUM LS4



[WWW.REELDR.COM](http://WWW.REELDR.COM)

KEY NO.	PART NO.	DESCRIPTION	KEY NO.	PART NO.	DESCRIPTION	KEY NO.	PART NO.	DESCRIPTION
1	JU321-6	Spool Ass'y	21	KQ049-2	Arm Lever Spring	42	GU073	Handle Screw Cap
2	GU347-8	Bail Ass'y	22	QL020	Arm Lever Spring Holder	43	KU001-2	Body
3	MT016-2	Line Roller Bushing	23	KU009-2	Rotor	44	GU090	Stopper Lever
4	MT004	Line Roller	24	AQ028-6	Ball Bearing	45	JU100	Oscillator Retainer Screw
5	GU051-4	Arm Lever Pin	25	JU060	Ratchet Gear	46	JU078	Oscillator Slider Retainer
6	GU105-7	Line Roller Washer	26	JU011	Pinion Gear	47	KU025	Oscillator Slider
7	NU007	Arm Lever	27	JU077	Bearing Screw	48	KU053	Oscillation Gear
8	KQ108	Bail Screw	28	GU077-5	Stopper Screw	49	GU089	Stopper Lever Spring
9	KQ034	"E" Clip	29	JU063	Stopper "A"	50	GU105-17	Drag Friction Washer
10	JU315-3	Main Shaft Ass'y	30	JU074	Stopper "B"	51	KU075	Metal
11	GU006-2	Rotor Nut	31	JU061	Stopper Spring	52	GU105-18	Drag "B" Washer
12	KQ034	"E" Clip	32	GU091-2	Stopper Bushing	53	JU080	Drag "D" Washer
13	GU077-4	Rotor Nut Lock Screw	33	GU318-8	Handle Ass'y	54	JU081	Drag "A" Washer
14	KU019	Kick Lever	34	JU057	Body Cover Screw	55	JU043	Drag Spring
15	KQ049	Kick Lever Spring	35	KU023-2	Body Cover	56	GU105-19	Drag Adj. Washer
16	KU046	Kick Lever Cover	36	JU027	Body Cover Bushing	57	JU066	Drag Nut
17	GU077-2	Kick Lever Cover Screw	37	GU105-13	Drive Gear Adj. Washer	58	JU083	Drag Click Claw
18	GU077-2	Arm Lever Spring Cover Screw	38	JU012	Drive Gear	59	JU032	Drag Knob
19	PU087	Arm Lever Spring Cover	39	JU086	Silent Cam	60	JU101	Drag Knob Screw
20	QL031	Spring Shaft	40	JU027	Body Bushing			
			41	GU105	Handle Cap Washer			

**PLEASE ORDER BY PART NUMBER**

Rev. 7/92

Zebco Division Brunswick Corporation, Box 270, Tulsa, OK 74101 USA 918-836-5581

