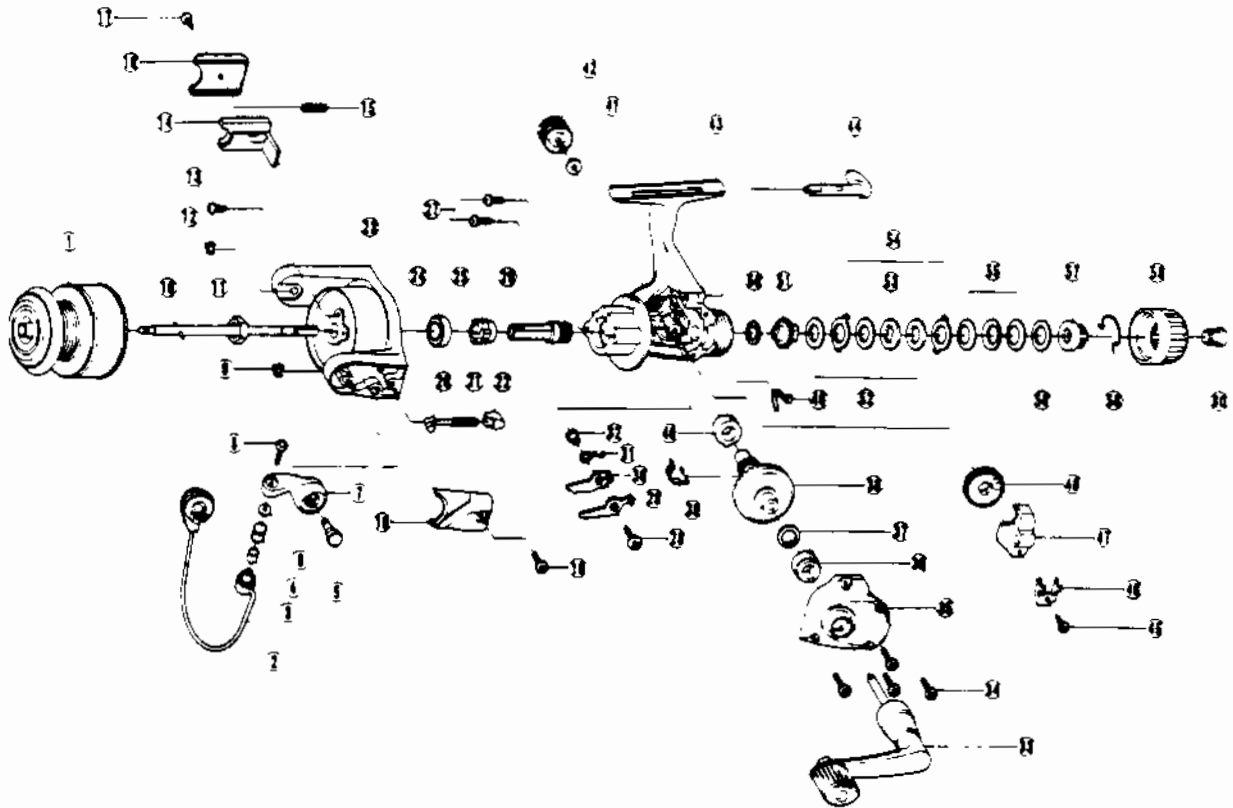


# QUANTUM<sup>®</sup> LS2



Key No.	Part No.	Description
1	JU321-4	SPOOL ASSEMBLY
2	GU347-6	BAIL ASSEMBLY
3	MT016-2	LINE ROLLER BUSHING
4	MT004	LINE ROLLER
5	GU051-4	ARM LEVER PIN
6	GU105-7	WASHER-LINE ROLLER
7	NU007	ARM LEVER
8	KQ108	BAIL SCREW
9	KQ034	E-CLIP
10	JU315-2	MAIN SHAFT
11	GU006	ROTOR NUT
12	KQ034	E-CLIP
13	GU077-4	SCREW ROTOR NUT LOCK
14	MU019	KICK LEVER
15	KQ049	KICK LEVER SPRING
16	HU046	KICK LEVER COVER
17	GU077-2	SCREW
18	GU077-2	SCREW
19	MU087	ARM LEVER SP/COVER
20	NL031	SPRING SHAFT
21	KQ049-3	ARM LEVER SPRING
22	QL020	SPRING HOLDER
23	HU009-2	ROTOR
24	AQ028	BODY BEARING - ROTOR
25	PL060	RATCHET GEAR
26	GU011-2	PINION GEAR
27	GU077	SCREW-BEARING
28	GU077-5	SCREW-STOPPER
29	GU063	STOPPER A
30	GU074	STOPPER B

WWW.REELDR.COM

Key No.	Part No.	Description
31	GU061	STOPPER SPRING
32	GU091	STOPPER BUSHING
33	GU318-6	HANDLE ASSEMBLY
34	GU057	SCREW-BODY COVER
35	HU023-2	BODY COVER
36	GU027	BODY BUSHING
37	GU105-8	D/G ADJ. WASHER
38	GU012	DRIVE GEAR
39	GU086	SILENT CAM
40	GU027	BODY BUSHING
41	GU105	WASHER-HANDLE SCREW CAP
42	GU073	HANDLE SCREW CAP
43	HU001-2	BODY
44	GU090	STOPPER LEVER
45	JU100	SCREW-OSC. RETAINER
46	HU078	RETAINER-OSC. SLIDER
47	HU025	OSC. SLIDER
48	HU053	OSCILLATION GEAR
49	GU089	STOPPER LEVER SPRING
50	GU105-22	WASHER-DRAG FRICTION
51	HU075	METAL GEAR
52	GU105-23	WASHER-DRAG B
53	HU080	WASHER-DRAG D
54	HU081	WASHER-DRAG A
55	HU043	DRAG SPRING
56	GU105-24	DRAG ADJ. WASHER
57	HU066	DRAG NUT
58	RL033	DRAG CLICK CLAW
59	HU032	DRAG KNOB
60	HU101	DRAG KNOB SCREW

Prices subject to change without notice. Prices do not include postage and handling.

**PLEASE ORDER BY PART NUMBER**

Rev. 5/93

Zebco Division Brunswick Corporation, Box 270, Tulsa, OK 74101 USA 918-836-5581

