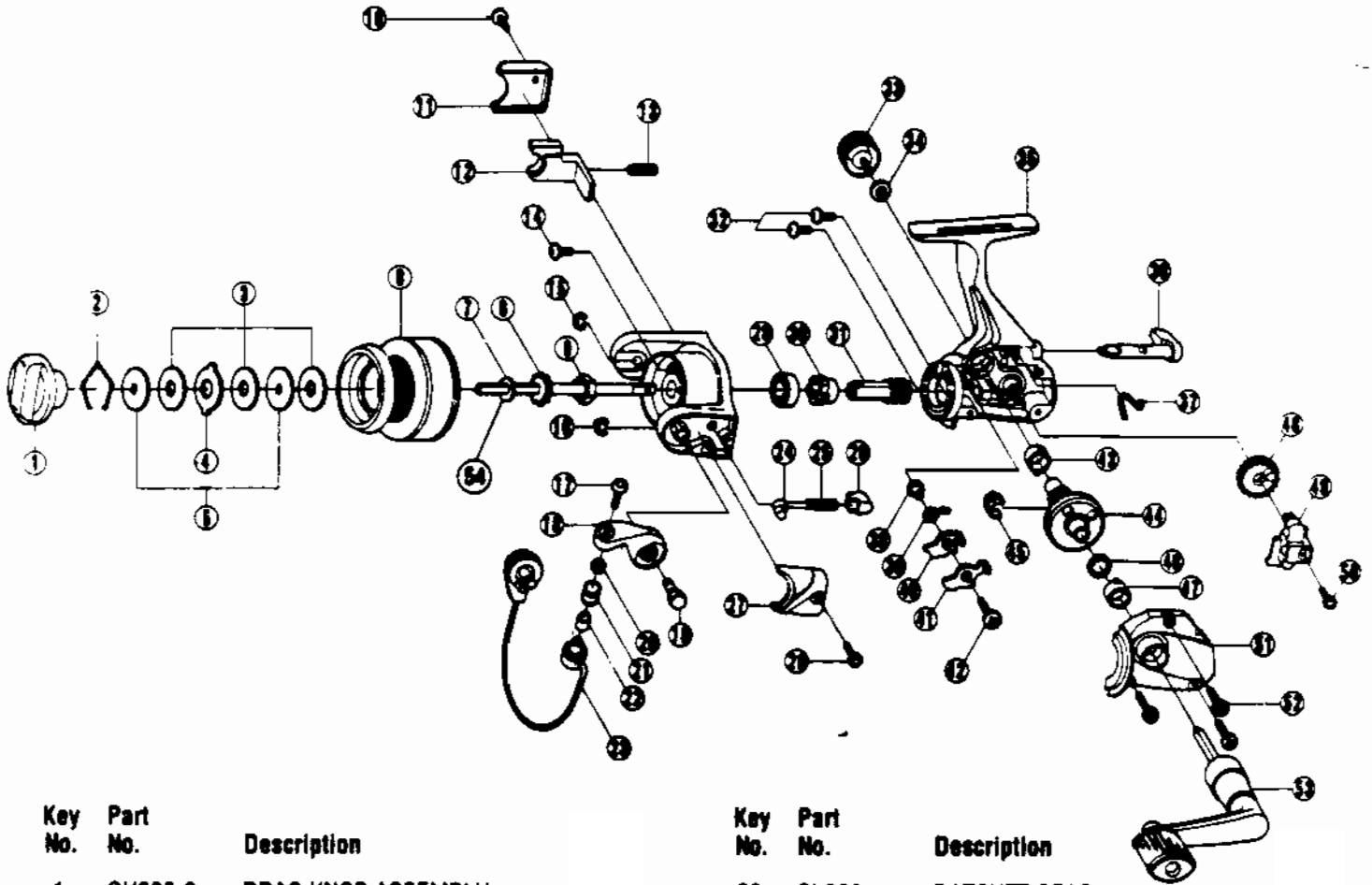


QUANTUM[®] LS1



Key No.	Part No.	Description
1	GU332-2	DRAG KNOB ASSEMBLY
2	GU038	DRAG RETAINER
3	GU105-5	SPOOL WASHER B
4	GU081	SPOOL WASHER A
5	GU080	SPOOL WASHER D
6	GU321-2	SPOOL ASSEMBLY
7	GU105-6	SPOOL ADJ. WASHER
8	GU037	SPOOL CLICK CLAW
9	GU006	ROTOR NUT
10	GU077-2	SCREW
11	GU046	KICK LEVER COVER
12	GU019	KICK LEVER
13	KQ049	KICK LEVER SPRING
14	GU077-4	SCREW ROTOR NUT LOCK
15	KQ034	E-CLIP
16	KQ034	E-CLIP
17	KQ108	BAIL SCREW
18	LU007	ARM LEVER
19	GU051-2	ARM LEVER PIN
20	GU105-7	WASHER-LINE ROLLER
21	MT004	LINE ROLLER
22	MT016-2	LINE ROLLER BUSHING
23	GU347-2	BAIL ASSEMBLY
24	KQ031	SPRING SHAFT
25	KQ049-3	ARM LEVER SPRING
26	QL020	SPRING HOLDER
27	LU087	ARM LEVER SP/COVER
28	GU077-2	SCREW
29	AQ028	BODY BEARING - ROTOR

WWW.REELDR.COM

Key No.	Part No.	Description
30	PL060	RATCHET GEAR
31	GU011	PINION GEAR
32	GU077	SCREW-BEARING
33	GU073	HANDLE SCREW CAP
34	GU105	WASHER-HANDLE SCREW CAP
35	GD001-2	BODY
36	GU090	STOPPER LEVER
37	GU089	STOPPER LEVER SPRING
38	GU091	STOPPER BUSHING
39	GU061	STOPPER SPRING
40	GU063	STOPPER A
41	GU074	STOPPER B
42	GU077-5	SCREW-STOPPER
43	GU027	BODY BUSHING
44	GU012	DRIVE GEAR
45	GU086	SILENT CAM
46	GU105-8	D/G ADJ. WASHER
47	GU027	BODY BUSHING
48	GU053	OSCILLATION GEAR
49	GU025	OSCILLATION SLIDER
50	GU100	SCREW-MAIN SHAFT
51	GU023-2	BODY COVER
52	GU057	SCREW-BODY COVER
53	GU318-2	HANDLE ASSEMBLY
54	GU015	MAIN SHAFT

Prices subject to change without notice. Prices do not include postage and handling.

PLEASE ORDER BY PART NUMBER

Rev. 5/93

Zebco Division Brunswick Corporation, Box 270, Tulsa, OK 74101 USA 918-836-5581

