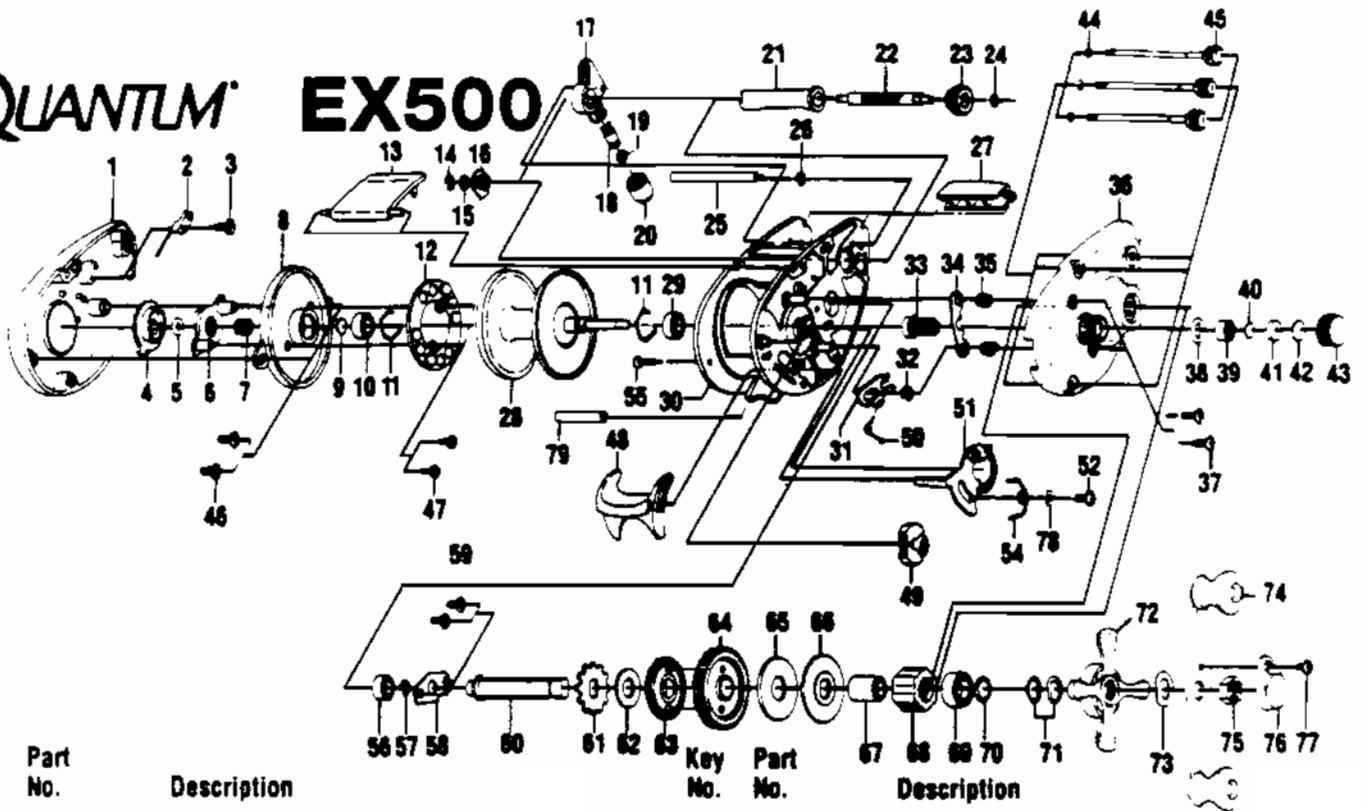


QUANTUM

EX500



Key No.	Part No.	Description	Key No.	Part No.	Description
1	SW023	LEFT SIDE COVER	41	QW081	COLLAR
2	QW108	CLICKER	42	QW082	SPOOL CUSHION WASHER
3	QW125	SPOOL COVER SCREW	43	QW033	SPOOL TENSION KNOB
4	SW026	MAGNET CONTROL DIAL	44	QW073	RING-THUMB SCREW RET
5	CX4250	O RING	45	QW374	THUMB SCREW
6	QW028	SLIDE CAM	46	QW125	SPOOL COVER SCREW
7	CX4301	MAGNET RET. SPRING	47	QW076	SCREW
8	QW051	SPOOL COVER	48	SW009	THUMB BAR
9	QW032-1	SPOOL TENSION KNOB	49	SW087	FLIPPIN' SWITCH
10	QW017	CRANK SHAFT BEARING	50	QW097	KICK LEVER SPRING
11	QW080	CLIP RING	51	SW039	RELEASE SLIDER
12	QW330	MAGNET PLATE ASSY	52	QW076	SCREW
13	SW027	HOOD	53	SW041	SPRING ANCHOR
14	ZX4657	RETAINER CLIP	54	UW104	RELEASE SLIDER SPRING
15	QW035-3	WASHER - WORM SHAFT	55	SW120	PIVOT SPRING
16	QW067	WORM SHAFT BUSHING	56	SW017	CRANK SHAFT BEARING
17	QW347	LINE GUIDE CARRIER	57	CX4152	WORM SHAFT RETAINER
18	QW006	LINE GUIDE PAWL	58	QW002	CRANK SHAFT RETAINER
19	QW035-3	WASHER - WORM SHAFT	59	QW107	CRANK SHAFT RET. SCREW
20	QW007	LINE GUIDE CARRIER SCREW	60	QW008	CRANK SHAFT
21	QW016	WORM SHAFT GUIDE	61	QW083	TRIP RATCHET
22	QW072	WORM SHAFT	62	QW111	WASHER
23	QW085	LEVEL WIND GEAR	63	QW112	GEAR - L/W IDLER
24	WX4153	E-CLIP (THUMB BAR)	64	SW012	DRIVE GEAR
25	QW061	STABILIZER BAR	65	QW059	DRAG DISC
26	VX4243	E-CLIP	66	QW045	DRAG WASHER
27	SW099	FRONT SUPPORT	67	QW052	CLUTCH SLEEVE
28	QW321	SPOOL ASSY	68	QW063	ANTI-REVERSE CLUTCH
29	SW017	CRANK SHAFT BEARING	69	TW058	BEARING - CRANK SHAFT TOP
30	SW001	FRAME	70	QW035	CRANK SHAFT WASHER
31	SW077	KICK LEVER	71	CX4662	DRIVE SHAFT SPR. WSHR
32	CX4152	WORM SHAFT RETAINER	72	QW055	DRAG STAR
33	SW311	PINION GEAR	73	CX4660	HANDLE WASHER
34	SW025	PINION YOKE	74	QW318	HANDLE ASSY
35	QW040	PINION YOKE SPRING	75	QW003	HANDLE NUT
36	SW324	RIGHT SIDE COVER	76	QW034	HANDLE NUT CAP
38	CX4258	O RING	77	QW123	HANDLE NUT CAP SCREW
39	SW117	BEARING	78	SW121	RELEASE SLIDER WASHER
40	QW032-1	SPOOL TENSION KNOB			

WWW.REELDR.COM

Prices subject to change without notice. Prices do not include postage and handling.

PLEASE ORDER BY PART NUMBER

Rev. 5/93

Zebco Division Brunswick Corporation, Box 270, Tulsa, OK 74101 USA 918-836-5581

