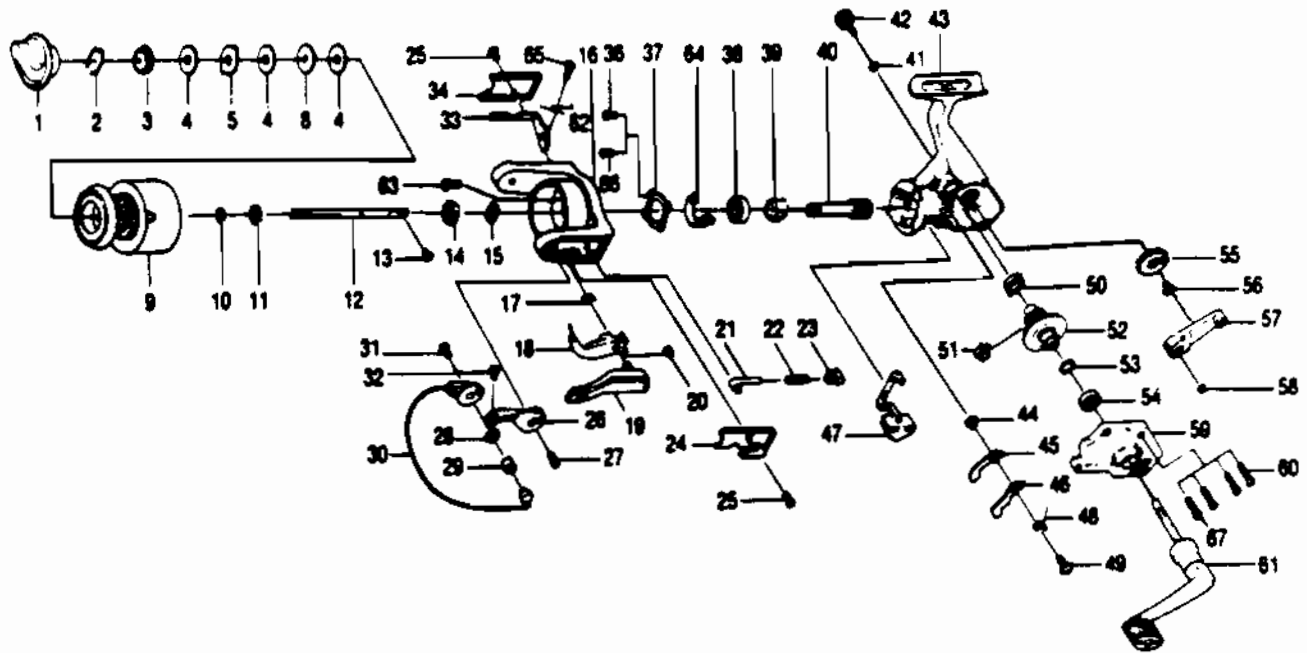


QUANTUM EX5



Key No.	Part No.	Description
1	CQ332	DRAG KNOB ASSY.
2	CQ038	DRAG RETAINER
3	CQ050	SPOOL WASHER 'C'
4	CQ033	SPOOL WASHER 'A'
5	CQ029	SPOOL WASHER 'B'
9	HQ321-2	SPOOL
10	CQ030	SPOOL ADJ. WASHER
11	CQ037	SPOOL CLICK CLAW
12	CQ015-1	MAIN SHAFT
13	AQ100	MAIN SHAFT SCREW
14	UL006	ROTOR NUT
15	UL065	ROTOR RETAINER WASHER
16	HQ009-2	ROTOR
17	NL096	TRIP LINK SPRING
18	PL097	TRIP LINK
19	PL115	TRIP LEVER
20	NL034	E-CLIP
21	QL031	SPRING SHAFT
22	QL022	BAIL SPRING
23	QL020	SPRING HOLDER
24	CQ087-1	BAIL SPRING COVER
25	AQ085	ROTOR COVER SCREW
26	CQ007	ARM LEVER
27	AQ051	ARM LEVER SCREW
28	PL017	BAIL COLLAR
29	PL004	LINE ROLLER
30	DQ347-1	BAIL ASSY
31	AQ044	BAIL HOLDER SCREW
32	SL108	BAIL SCREW
33	DQ019-1	KICK LEVER
34	CQ024-1	KICK LEVER COVER

WWW.REELDR.COM

Key No.	Part No.	Description
36	AQ080	BEARING PLATE SCREW
37	CQ040-1	BEARING PLATE
38	CQ028	B/BEARING - ROTOR
39	CQ060	RATCHET GEAR
40	GQ011-2	PINION GEAR
41	BC105	HANDLE CAP WASHER
42	QLJ73-2	HANDLE SCREW CAP
43	HQ001-2	BODY
44	NL091	STOPPER BUSHING
45	QL064	STOPPER 'A'
46	QL063	STOPPER 'B'
47	CQ059	STOPPER LEVER
48	CQ061	STOPPER L/R SPRING
49	CQ083	STOPPER SCREW
50	AQ013-1	BODY BUSHING
51	CQ086	SLIDING SPRING
52	CQ012	DRIVE GEAR
53	AQ026	DRIVE GEAR ADJ. WASHER
54	EQ157	B/B BODY COVER
55	CQ053	BODY BEARING - ROTOR
56	WK078	OSC. GEAR SCREW
57	CQ025	O/S PIVOT ARM
58	AQ056	O/S PIVOT ARM WASHER
59	HQ023-2	BODY COVER
60	AQ057	BODY COVER SCREW
61	QL318-2	HANDLE ASSY.
62	CQ049-1	KICK LEVER SPRING
63	RL094	ROTOR NUT LOCK SCREW
64	CQ082-1	KICK LEVER GUIDE
66	AQ080-1	BEARING PLATE S/C

Prices subject to change without notice. Prices do not include postage and handling.

PLEASE ORDER BY PART NUMBER

Rev. 5/93

Zebco Division Brunswick Corporation, Box 270, Tulsa, OK 74101 USA 918-836-5581

