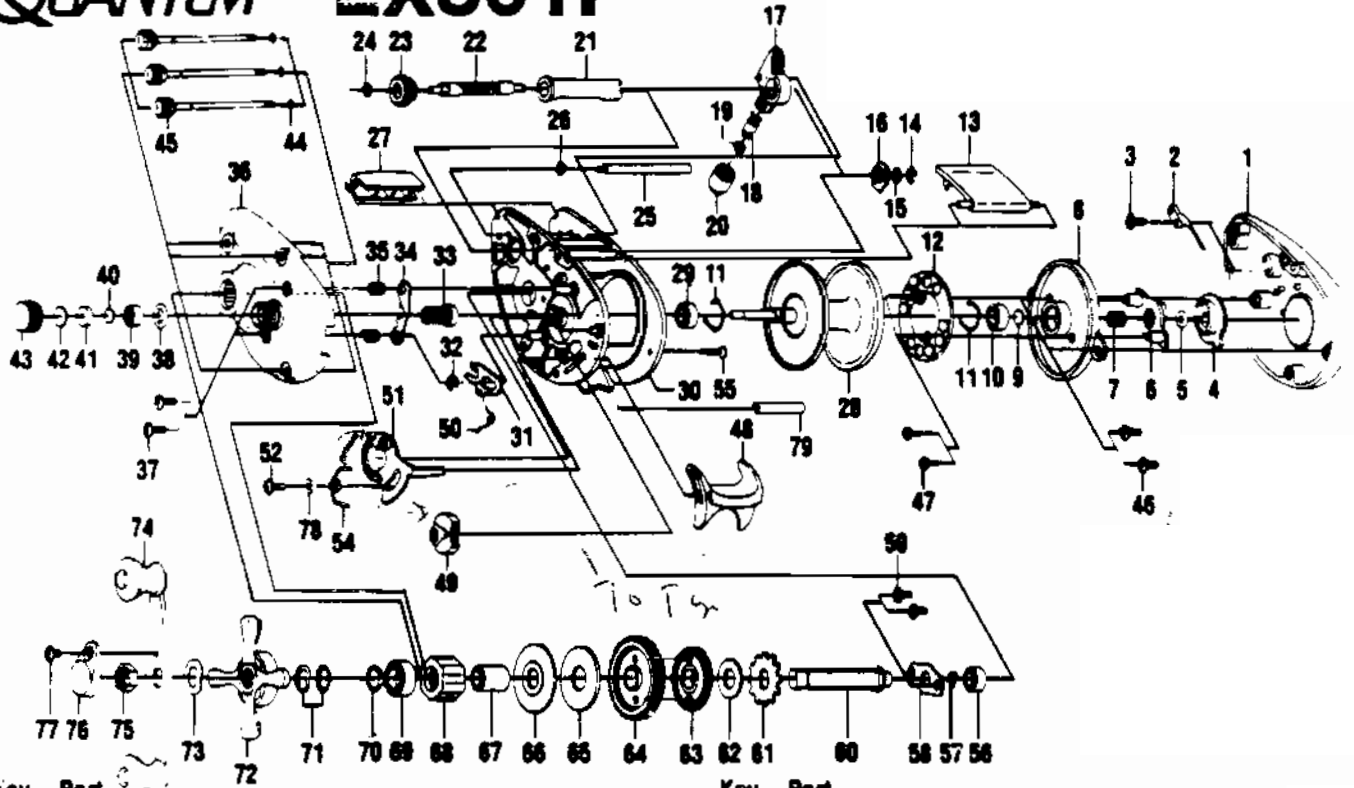


QUANTUM EX301P



| Key No. | Part No. | Description | Key No. | Part No. | Description |
|---------|----------|--------------------------|---------|----------|-----------------------------|
| 1 | XW024-1 | Right Side Cover | 40 | QW032-1 | Washer - Spool Tension |
| 2 | QW108 | Clicker | 41 | QW081 | Collar |
| 3 | QW125 | Screw - Clicker | 42 | QW082 | Cushion Washer - Spool |
| 4 | XW026 | Magnet Control Dial | 43 | QW033 | Spool Tension Knob |
| 5 | CX4250 | Dial Friction Ring | 44 | QW073 | Ring - Thumb Screw Ret. |
| 6 | QW028 | Slide Cam | 45 | QW374 | Thumb Screw |
| 7 | CX4301 | Slide Cam Spring | 46 | QW125 | Screw - Spool Cover |
| 8 | QW051 | Spool Cover | 47 | QW076 | Screw - Magnet Ring |
| 9 | QW032-1 | Spool Tension Shim | 48 | SW009 | Thumb Bar |
| 10 | SW017 | Bearing | 49 | XW087 | Flippin' Switch |
| 11 | QW080 | Clip Ring | 50 | XW104 | Spring - Kick Lever |
| 12 | QW330 | Magnet Plate Assy. | 51 | XW039 | Release Slider |
| 13 | QW027-3 | Hood | 52 | QW076 | Screw Release Slider |
| 14 | ZX4657 | E-Clip (Worm Shaft) | 54 | XW104 | Spring - Release Slider |
| 15 | QW035-3 | Washer (Worm Shaft) | 55 | SW050 | Thumb Bar Retaining Screw |
| 16 | QW067 | Worm Shaft Bushing | 56 | QW017 | Bearing - Crankshaft |
| 17 | QW347 | Line Guide Carrier | 57 | CX4152 | E-Ring - Crankshaft |
| 18 | CW006 | Line Guide Pawl | 58 | QW002 | Retainer - Crankshaft |
| 19 | QW035-3 | Washer (L/G Pawl) | 59 | QW107 | Screw - Crankshaft Retainer |
| 20 | QW007 | Line Guide Carrier Screw | 60 | QW008-2 | Crankshaft |
| 21 | QW016 | Worm Shaft Guide | 61 | QW083 | Trip Ratchet |
| 22 | QW072 | Worm Shaft | 62 | QW111 | Washer |
| 23 | QW085 | Level Wind Gear | 63 | QW112 | Gear - L/W Idler |
| 24 | VX4243 | E-Ring (L/W Gear) | 64 | XW012-2 | Drive Gear |
| 25 | QW061 | Stabilizer Bar | 65 | QW059 | Drag Disc |
| 26 | VX4243 | E-Ring (Stabilizer Bar) | 66 | QW045 | Drag Washer |
| 27 | QW099-3 | Front Support | 67 | QW052 | Clutch Sleeve |
| 28 | QW321-2 | Spool Assy. | 68 | QW063 | Anti-Reverse Clutch |
| 29 | SW017 | Bearing | 69 | TW058 | Bearing - Crankshaft Top |
| 30 | XW001 | Frame | 70 | QW035 | Washer - Crankshaft |
| 31 | SW077-2 | Kick Lever | 71 | CX4662 | Spring "O" Washer |
| 32 | CX4152 | E-Ring (Kick Lever) | 72 | QW055-2 | Drag Star |
| 33 | XW311-2 | Pinion Gear | 73 | CX4660 | Handle Washer |
| 34 | XW025 | Pinion Yoke | 74 | QW318 | Handle Assy. |
| 35 | QW040 | Spring-Pinion Yoke | 75 | QW003-2 | Handle Nut |
| 36 | XW023-1 | Left Side Cover | 76 | QW034 | Handle Nut Cap |
| 37 | QW053-1 | Screw (Lft. Side Cover) | 77 | QW123 | Handle Nut Cap Screw |
| 38 | CX4258 | Tension Knob Ring | 78 | SW121 | Washer - Release Slider |
| 39 | QW117 | Bearing | 79 | SW094 | Spacer |

Prices subject to change without notice. Prices do not include postage and handling.

PLEASE ORDER BY PART NUMBER

Rev. 5/93

Zebco Division Brunswick Corporation, Box 270, Tulsa, OK 74101 USA 918-836-5581

