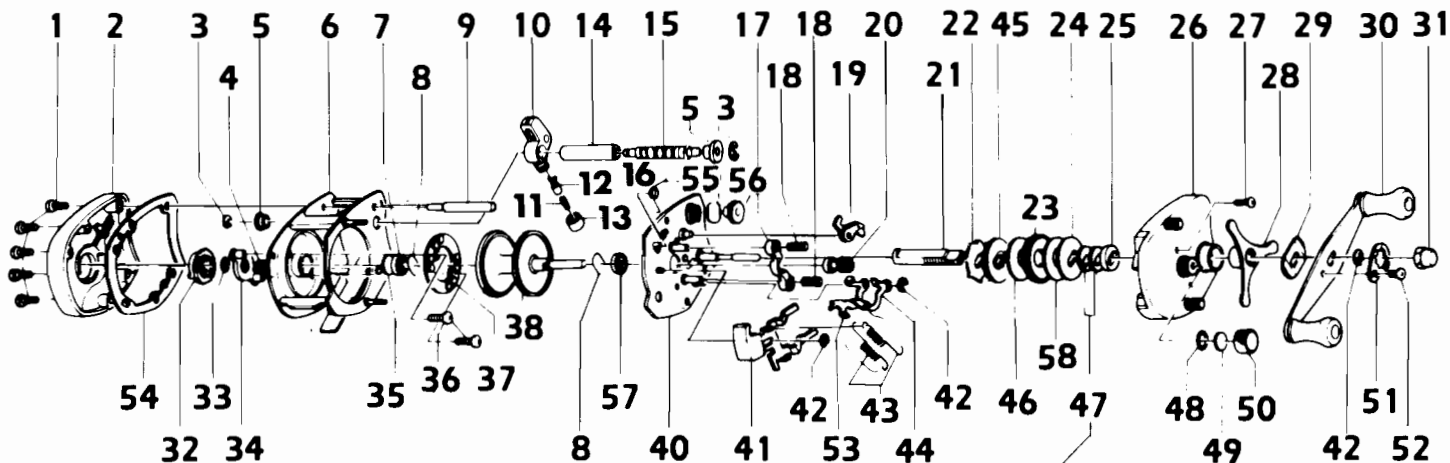


QUANTUM® 381



**KEY PART
NO. NO.**

NO. NO.	DESCRIPTION
1 CX4102	LEFT SIDE PLATE SCREW
2 PX4101	LEFT SIDE PLATE
3 CX4152	WORM SHAFT RETAINER
4 CX4301	MAGNET RET. SPRING
5 CX4156	WORM GUARD BUSHING
6 PX4051	FRAME
7 BX4156	SPOOL SHAFT BUSHING
8 CX4253	BEARING RETAINER
9 PX4159	FRAME POST - BLACK
10 CX4201-1	LINE GUIDE
11 CX4203	LINE GUIDE PAWL SPRING
12 CX4202	LINE GUIDE PAWL
13 CX4204	PAWL CAP
14 CX4158	WORM SHAFT GUARD-BLK
15 CX4151-1	WORM SHAFT W/O GEAR
16 CX4502	SPOOL RELEASE SPRING
17 CX4401	PINION YOKE
18 CX4403	PINION YOKE SPRING
19 CX4452-1	DOUBLE ANTI-REV PAWL
20 PX4256	PINION GEAR
21 CX4652	DRIVE SHAFT
22 CX4451-1	RELEASE RATCHET
23 PX4651	DRIVE GEAR
24 PX4659	DRAG WASHER B
25 CX4254	DRIVE SHFT BUSH
26 PX4103	RIGHT SIDE PLATE
27 CX4352	RIGHT SIDE COVER SCREW
28 CX4663	STAR DRAG
29 CX4660	HANDLE WASHER
30 PX4701	HANDLE
31 CX4702	HANDLE NUT
32 NX4303	MAGNETIC CONTROL DIAL
33 CX4250	O RING
34 CX4261	MAGNET RET. SUPPORT
35 CX4255	SPOOL TENSION SHIM A

**KEY PART
NO. NO.**

NO. NO.	DESCRIPTION
36 CX4602	MAGNET RETAINER SCREW
37 CX4257	MAGNET RETAINER
38 CX4251	SPOOL ASSY
40 PX4351	SET PLATE
41 CX4402	SPOOL RELEASE BUTTON
42 CX4656	RETAINER CLIP
43 CX4353	SET PLATE ACT. SPRING
44 CX4503-1	SET PLATE ACTUATOR B
45 PX4658-1	ANTI-REVERSE RATCHET
46 PX4661	DRAG WASHER A
47 CX4662	DRIVE SHAFT SPR. WSHR
48 CX4258	O RING
49 CX4302	SPOOL TENSION SHIM B
50 CX4259	SPOOL TENSION KNOB
51 CX4703	HANDLE NUT LOCK
52 CX4704	HANDLE NUT LOCK SCREW
53 CX4501-1	SET PLATE ACTUATOR A
54 PX4107	LEFT SIDE PLATE SPACER
55 CX4153	GEAR RETAINING CLIP
56 PX4150	WORM SHAFT GEAR
57 BX4157	SPOOL SHAFT BUSHING B
58 PX4664	DRAG WASHER C
CX4000	SPARE PARTS W/WRENCH
T130	WRENCH

WWW.REELDR.COM

Prices subject to change without notice. Prices do not include postage and handling.

PLEASE ORDER BY PART NUMBER

Rev. 9/88

Zebco Division Brunswick Corporation, Box 270, Tulsa, OK 74101 USA 918-836-5581

