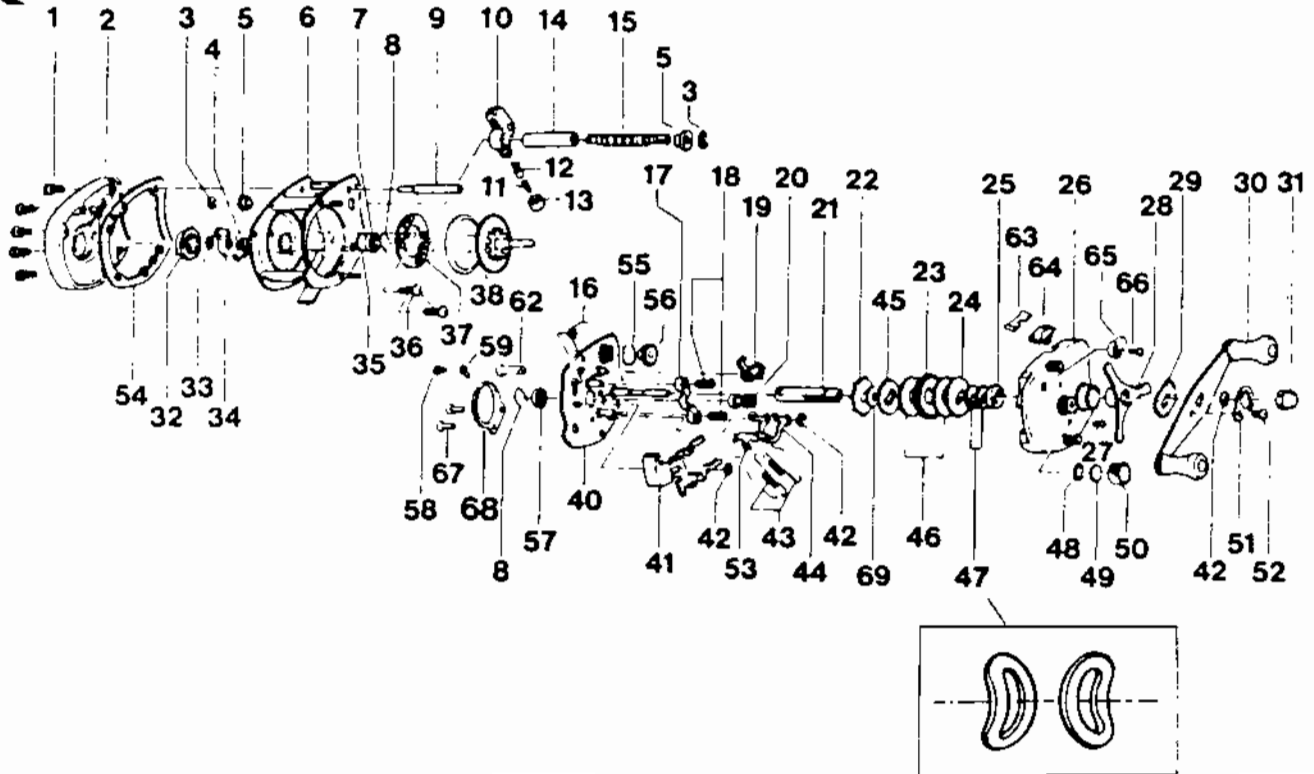


QUANTUM 1421MG



Key No.	Part No.	Description	Key No.	Part No.	Description
1	LX4102	Right Side Plate Screw	37	CX4257	Magnet Retainer
2	LX4101-1	Right Side Plate	38	MX4251	Spool
3	CX4152	Worm Shaft Retainer	40	MX310-1	Set Plate (incl: 16, 40 4173 42(2), 44, 53)
4	CX4301	Magnet Retainer Spring	41	LX4402-1	Spool Release Button
5	CX4156	Worm Guard Bushing	42	CX4656	Retainer Clip
6	MX4051-1	Frame	43	FX4353	Set Plate Actuator Spring
7	CX4252	Spool Shaft Bearing	44	LX4503	Set Plate Actuator B
8	CX4253	Bearing Retainer	45	LX4658	(Anti-Reverse Ratchet)
9	EX4159	Frame Post - Silver	46	CX4661-1	Drag Washer A
10	NX4201	Line Guide	47	CX4662	Drive Shaft Spring Washer
11	CX4203	Line Guide Pawl Spring	48	CX4258	O Ring
12	CX4202	Line Guide Pawl	49	CX4302	Spool Tension Shim B
13	CX4204	Pawl Cap	50	NX4259	Spool Tension Knob
14	EX4158	Worm Shaft Guard - Silver	51	LX4703	Handle Nut Lock
15	FX4151	Worm Shaft	52	LX4704	Handle Nut Lock Screw
16	CX4502	Spool Release Spring	53	LX4501	Set Plate Actuator A
17	CX4401	Pinion Yoke	54	NX4107	Right Side Plate Spacer
18	CX4403	Pinion Yoke Spring	55	CX4153	Gear Retaining Clip
19	LX4452	Anti-Reverse Pawl	56	LX4150	Worm Shaft Gear
20	LX4256	Pinion Gear	57	CX4252	Spool Shaft Bearing
21	LX4652	Drive Shaft	58	FX4552	Click Pawl Screw
22	LX4451	Release Ratchet	59	FX4551-1	Click Pawl
23	LX4651	Drive Gear	62	MX4557-1	Click Cam
24	CX4659	Drag Washer B	63	FX4455	Anti-Reverse Lever Plate
25	CX4254	Drive Shaft Bushing	64	FX4456-1	Anti-Reverse Lever
26	MX324-1	Left Side Plate	65	FX4558-1	Bait Click Lever
27	LX4352	Left Side Cover Screw	66	FX4559-1	Bait Click Lever Screw
28	LX4663-1	Star Drag	67	MX4561	Click Spring Screw
29	CX4660	Handle Washer	68	MX4560	Click Spring
30	NX4701	Handle	69	CX4450	Anti-Reverse Ratchet Washer
31	LX4702	Handle Nut		Not Shown:	
32	CX4303	Magnetic Control Dial		T130	Wrench
33	CX4250	O Ring		CX4000-1	Spare Parts Kit w/Wrench (incl. 1, 8, 27, 35 49 52)
34	CX4261	Magnet Retainer Support			
35	CX4255	Spool Tension Shim A			
36	CX4602	Magnet Retainer Screw			

Prices subject to change without notice. Prices do not include postage and handling.

PLEASE ORDER BY PART NUMBER

Rev. 5/93

Zebco Division Brunswick Corporation, Box 270, Tulsa, OK 74101 USA 918-836-5581

