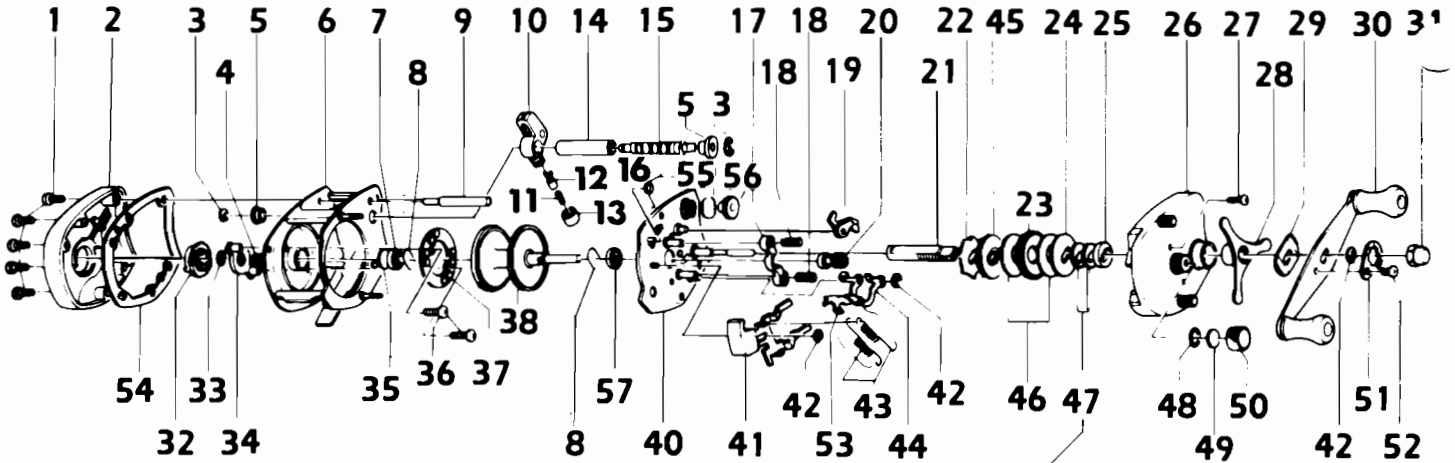
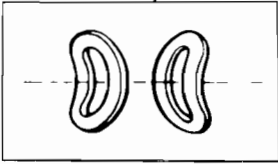


# QUANTUM® 1310MG/310MG



**KEY PART  
NO. NO.**

NO. NO.	DESCRIPTION
1 LX4102	RIGHT SIDE PLATE SCR.
2 NX4101	LEFT SIDE PLATE
3 CX4152	WORM SHAFT RETAINER
4 CX4301	MAGNET RET. SPRING
5 CX4156	WORM GUARD BUSHING
6 NX4051	FRAME
7 CX4252	SPOOL SHFT BEARING
8 CX4253	BEARING RETAINER
9 BX4159	FRAME POST- SILVER
10 NX4201	LINE GUIDE
11 CX4203	LINE GUIDE PAWL SPRING
12 CX4202	LINE GUIDE PAWL
13 CX4204	PAWL CAP
14 BX4158	WORM SHFT GUARD-SILVER
15 CX4151-1	WORM SHAFT W/O GEAR
16 CX4502	SPOOL RELEASE SPRING
17 CX4401	PINION YOKE
18 CX4403	PINION YOKE SPRING
19 CX4452-1	DOUBLE ANTI-REV PAWL
20 NX4256	PINION GEAR
21 CX4652	DRIVE SHAFT
22 CX4451-1	RELEASE RATCHET
23 NX4651	DRIVE GEAR
24 CX4659	DRAG WASHER B
25 CX4254	DRIVE SHFT BUSH
26 NX4103	RIGHT SIDE PLATE
27 LX4352	LEFT SIDE CVR SCREW
28 NX4663	STAR DRAG
29 CX4660	HANDLE WASHER
30 NX4701	HANDLE ASSY.
31 NX4702	HANDLE NUT
32 NX4303	MAGNETIC CONTROL DIAL
33 CX4250	O RING
34 CX4261	MAGNET RET. SUPPORT
35 CX4255	SPOOL TENSION SHIM A
36 CX4602	MAGNET RETAINTER SCREW



**KEY PART  
NO. NO.**

NO. NO.	DESCRIPTION
37 CX4257	MAGNET RETAINER
38 CX4251	SPOOL ASSY
40 NX4351	SET PLATE
41 NX4402	SPOOL RELEASE BUTTON
42 CX4656	RETAINER CLIP
43 CX4353	SET PLATE ACT. SPRING
44 CX4503-1	SET PLATE ACTUATOR B
45 CX4658-1	ANTI-REVERSE RATCHET
46 CX4661	DRAG WASHER A
47 CX4662	DRIVE SHAFT SPR. WSHR
48 CX4258	O RING
49 CX4302	SPOOL TENSION SHIM B
50 NX4259	SPOOL TENSION KNOB
51 LX4703	HANDLE NUT LOCK
52 LX4704	HANDLE NUT LOCK SCR.
53 CX4501-1	SET PLATE ACTUATOR A
54 NX4107	LEFT SIDE PLATE SPACER
55 CX4153	GEAR RETAINING CLIP
56 NX4150	WORM SHAFT GEAR
57 CX4252	SPOOL SHFT BEARING
CX4000	SPARE PARTS W/WRENCH
T130	WRENCH
<b>310MG SPECIAL PARTS</b>	
7 BX4156	SPOOL SHAFT BUSHING
7 CX4252	SPOOL SHFT BEARING
26 CX4103	RIGHT SIDE PLATE
57 BX4157	SPOOL SHAFT BUSHING B

WWW.REELDR.COM

Prices subject to change without notice. Prices do not include postage and handling.

**PLEASE ORDER BY PART NUMBER**

Rev. 9/88

Zebco Division Brunswick Corporation, Box 270, Tulsa, OK 74101 USA 918-836-5581

