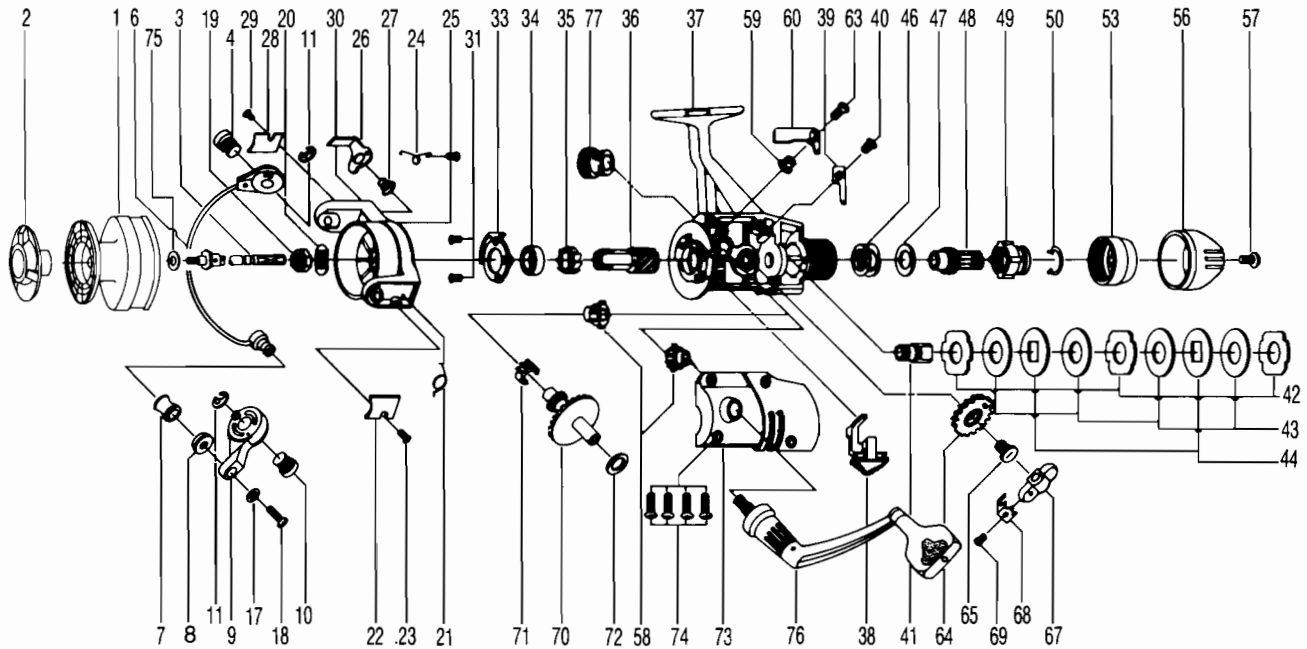


ZEBCO PSG70



KEY PART

NO. NO.	DESCRIPTION
1 FT321	SPOOL ASSY.
2 FT050	DRAG KNOB ASSY.
3 FT315	MAIN SHAFT ASSY.
4 FT044	BAIL HOLDER PIN
6 FT347	BAIL ARM ASSY.
7 ZB004	LINE ROLLER
8 ZB016	LINE ROLLER BUSH
9 FT007	ARM LEVER
10 ET043	ARM LEVER PIN
11 BT002	E-CLIP
17 FT102	BAIL WASHER
18 ZB108	BAIL AXLE SCREW
19 NB006	ROTOR NUT
20 FT065	ROTOR RETAINER
21 FT022	BAIL SPRING
22 ZB087	BAIL SPRING COVER
23 BT085	BAIL SPR. COVER SCREW
24 ZB049	TRIP LEVER SPRING
25 DT058	KICK LEVER SPR. SCR.
26 FT019	KICK LEVER
27 ZB037	TRIP LEVER SCREW
28 ZB024	TRIP LEVER COVER
29 BT085	BAIL SPR. COVER SCREW
30 FT009	ROTOR ASSY
31 BT080	BEARING PLATE SCREW
33 ZB040	BEARING RETAINER
34 ZB028	BALL BEARING
35 ZB060	ANTI-REV RATCHET
36 FT011	PINION GEAR
37 FT301	BODY ASSY.
38 FT059	A/R LEVER
39 DT068	CLICK CLAW

KEY PART

NO. NO.	DESCRIPTION
40 BT067	CLICK CLAW SCREW
41 FT104	SLIDER HOLDER
42 FT030	REAR DRAG WASH. "A"
43 FT039	REAR DRAG WASH. "B"
44 FT071	REAR DRAG WASH. "D"
46 FT031	REAR DRAG COIL SPR.
47 FT046	REAR DRAG ADJ. WSHR.
48 FT112	REAR DRAG NUT
49 FT017	SLIDING SCREW
50 FT033	BACK CLICK CLAW
53 FT132	REAR DRAG STOPPER
56 FT032	REAR DRAG CAP
57 DT079	REAR DRAG CAP SCREW
58 FT013	BODY CVR. BUSHING
59 DT014	A/R CLAW BUSHING
60 FT063	A/R CLAW (N)
63 DT089	A/R CLAW SCREW
64 FT053	OSCILLATING GEAR
65 FT078	OSCILLATING GEAR SCR
67 ZB025	OSCILLATOR SLIDER
68 ZB083	STOPPER PS70
69 NB084	STOPPER SCREW
70 FT012	DRIVE GEAR
71 ZB086	SLIDER SPRING
72 ZB026	CRANK GEAR SHIM
73 FT323	BODY COVER ASSY.
74 FT057	BODY COVER SCREW
75 FT056	SPOOL ADJ. WASHER
76 FT318	HANDLE ASSY.
77 DT073	HANDLE SCREW CAP

WWW.REELDR.COM

Prices subject to change without notice. Prices do not include postage and handling.

PLEASE ORDER BY PART NUMBER

Rev. 9/88

Zebco Division Brunswick Corporation, Box 270, Tulsa, OK 74101 USA 918-836-5581

