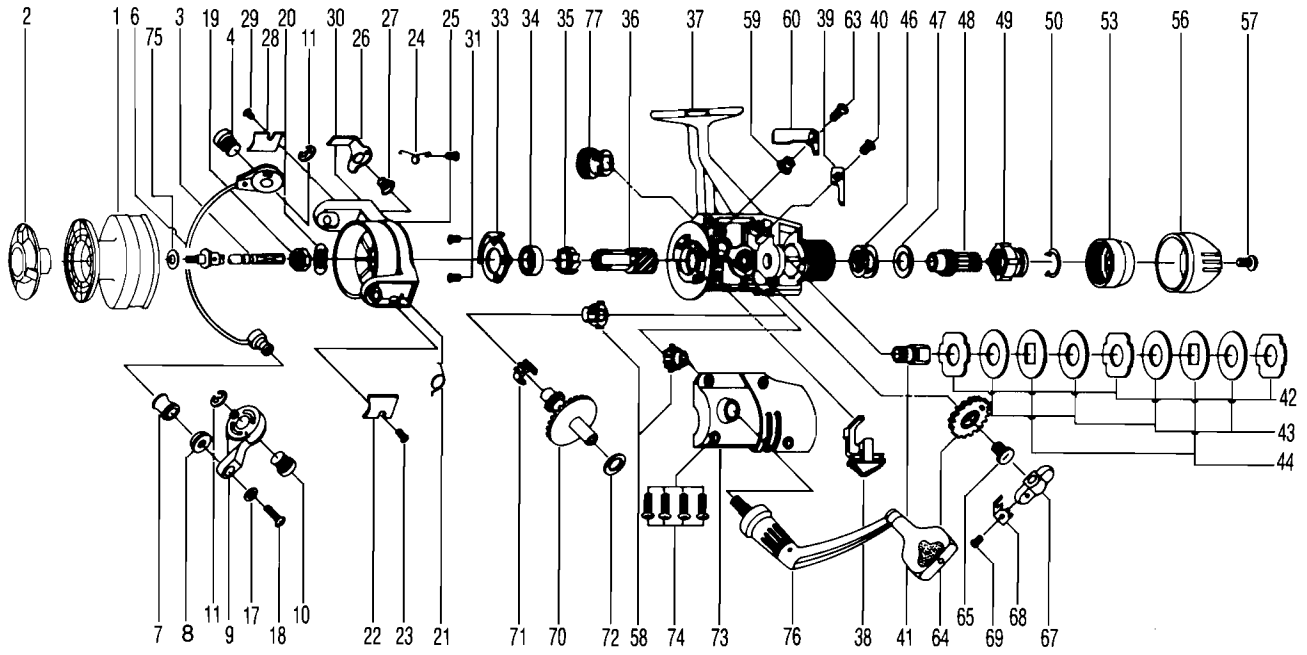


ZEBCO PSG50



**KEY PART
NO. NO.**

NO. NO.	DESCRIPTION
1 ET321	SPOOL ASSY.
3 ET315	MAIN SHAFT ASSY.
4 DT044	BAIL HOLDER PIN
6 ET347	BAIL ARM ASSY.
7 NB004	LINE ROLLER
8 NB016	LINE ROLLER BUSH.
9 NB007	BAIL ARM A
10 ET043	ARM LEVER PIN
11 DT002	E-CLIP
17 NB102	BAIL AXLE WASHER
18 NB108	BAIL AXLE SCR
19 NB006	ROTOR NUT
20 DT065	ROTOR RETAINER
21 ET022	BAIL SPRING
22 ET087	BAIL SPRING COVER
23 BT085	BAIL SPR. COVER SCREW
24 DT049	KICK LEVER SPRING
25 DT058	KICK LEVER SPR. SCR.
26 ET019	KICK LEVER
27 ET037	KICK LEVER SCREW
28 ET024	KICK LEVER COVER
29 BT085	BAIL SPR. COVER SCREW
30 ET009	ROTOR ASSY.
31 BT080	BEARING PLATE SCREW
33 DT040	BEARING PLATE
34 NB028	BALL BEARING
35 NB060	A/R RATCHET
36 DT011	PINION GEAR
37 ET301	BODY ASSY.
38 DT059	ANTI-REVERSE LEVER

**KEY PART
NO. NO.**

NO. NO.	DESCRIPTION
39 DT068	CLICK CLAW
40 BT067	CLICK CLAW SCREW
41 DT104	SLIDER HOLDER
42 DT030	REAR DRAG WSHR. "A"
43 DT039	REAR DRAG WSHR. "B"
44 DT071	REAR DRAG WSHR. "D"
46 DT031	REAR DRAG COIL SPR.
47 DT046	REAR DRAG ADJ. WSHR.
48 DT112	REAR DRAG NUT
49 DT017	SLIDING SCREW
50 DT033	BACK CLICK CLAW
53 DT132	REAR DRAG STOPPER
56 DT032	REAR DRAG CAP
57 DT079	REAR DRAG CAP SCREW
58 BT013	BODY COVER BUSHING
59 DT014	A/R CLAW BUSHING
60 DT063	A/R CLAW (N)
63 DT089	A/R CLAW SCREW
64 NB053	OSCILLATING GEAR
65 NB078	OSC. GEAR SCR.
67 NB025	OSCILLATOR SLIDER
68 NB083	STOPPER
69 NB084	STOPPER SCREW
70 NB012	CRANK GEAR
71 NB086	SLIDER SPRING
72 RB026	CRANK GEAR SHIM
73 ET323	BODY COVER ASSY.
74 DT057	BODY COVER SCREW
76 NB318	HANDLE ASSY.
77 CT073	HANDLE SCREW CAP

WWW.REELDR.COM

Prices subject to change without notice. Prices do not include postage and handling.
PLEASE ORDER BY PART NUMBER

Rev. 9/88

Zebco Division Brunswick Corporation, Box 270, Tulsa, OK 74101 USA 918-836-5581

