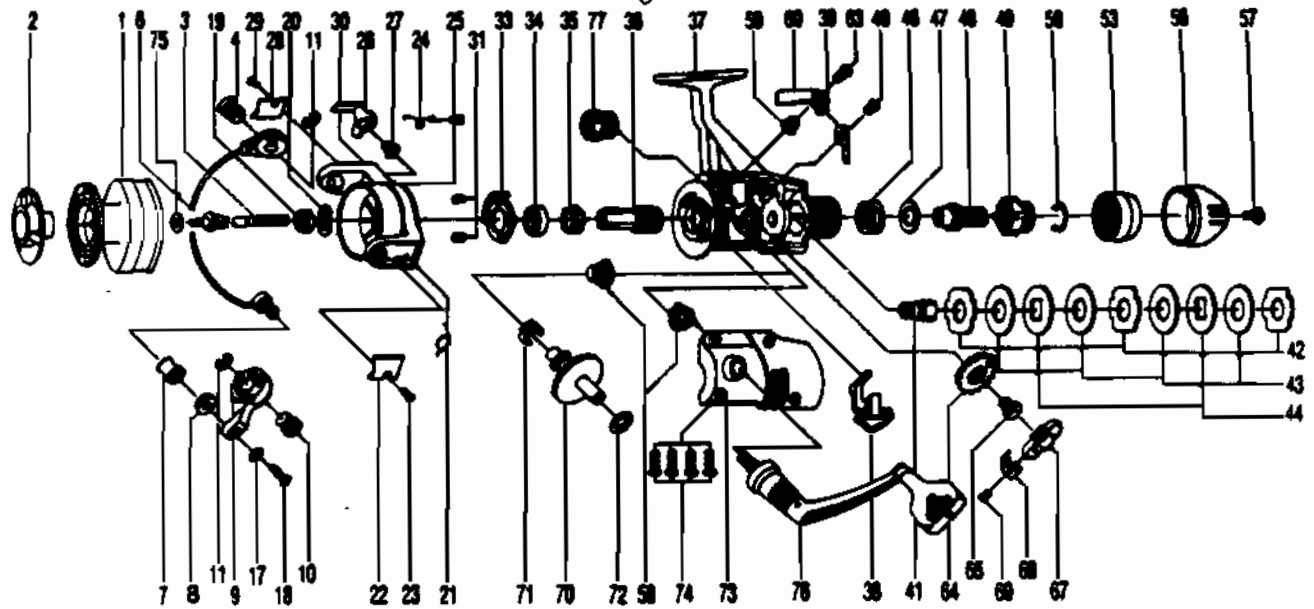


ZEBCO PSG40

bolus fit PSI 50's etc.



KEY PART NO. NO.

1	DT321	SPOOL ASSY.
3	DT315	MAIN SHAFT ASSY.
4	DT044	BAIL HOLDER PIN
6	DT347	BAIL ARM ASSY.
7	DT004	LINE ROLLER
8	PB016	LN ROLLER BUSH.
9	PB007	BAIL ARM A
10	DT043	ARM LEVER PIN
11	DT002	E-CLIP
17	PB102	BAIL AXLE WASHER
18	PB108	BAIL AXLE SCREW
19	NB006	ROTOR NUT
20	DT065	ROTOR RETAINER
21	DT022	BAIL SPRING
22	PB087	BAIL SPRING COVER
23	BT085	BAIL SPR. COVER SCREW
24	DT049	KICK LEVER SPRING
25	DT058	KICK LEVER SPR. SCR.
26	DT019	KICK LEVER
27	DT037	KICK LEVER SCREW
28	PB024	TRIP LVR. CVR.
29	BT085	BAIL SPR. COVER SCREW
30	DT009	ROTOR ASSY.
31	BT080	BEARING PLATE SCREW
33	DT040	BEARING PLATE
34	NB028	BALL BEARING
35	NB060	A/R RATCHET
36	DT011	PINION GEAR
37	DT301	BODY ASSY
38	DT059	ANTI-REVERSE LEVER
39	DT068	CLICK CLAW

KEY PART NO. NO.

40	BT067	CLICK CLAW SCREW
41	DT104	SLIDER HOLDER
42	DT030	REAR DRAG WSHR. "A"
43	DT039	REAR DRAG WSHR. "B"
44	DT071	REAR DRAG WSHR. "D"
46	DT031	REAR DRAG COIL SPR.
47	DT046	REAR DRAG ADJ. WSHR.
48	DT112	REAR DRAG NUT
49	DT017	SLIDING SCREW
50	DT033	BACK CLICK CLAW
53	DT132	REAR DRAG STOPPER
56	DT032	REAR DRAG CAP
57	DT079	REAR DRAG CAP SCREW
58	BT013	BODY COVER BUSHING
59	DT014	A/R CLAW BUSHING
60	DT063	A/R CLAW (N)
63	DT089	A/R CLAW SCREW
64	NB053	OSCILLATING GEAR
65	NB078	OSC. GEAR SCR.
67	NB025	OSCILLATOR SLIDER
68	NB083	STOPPER
69	NB084	STOPPER SCREW
70	NB012	CRANK GEAR
71	NB086	SLIDER SPRING
72	RB026	CRANK GEAR SHIM
73	DT323	BODY COVER ASSY.
74	DT057	BODY COVER SCREW
76	NB318	HANDLE ASSY.
77	CT073	HANDLE SCREW CAP

WWW.REELDR.COM

Prices subject to change without notice. Prices do not include postage and handling.

PLEASE ORDER BY PART NUMBER

Rev. 11/90

Zebco Division Brunswick Corporation, Box 270, Tulsa, OK 74101 USA 918-636-6561

