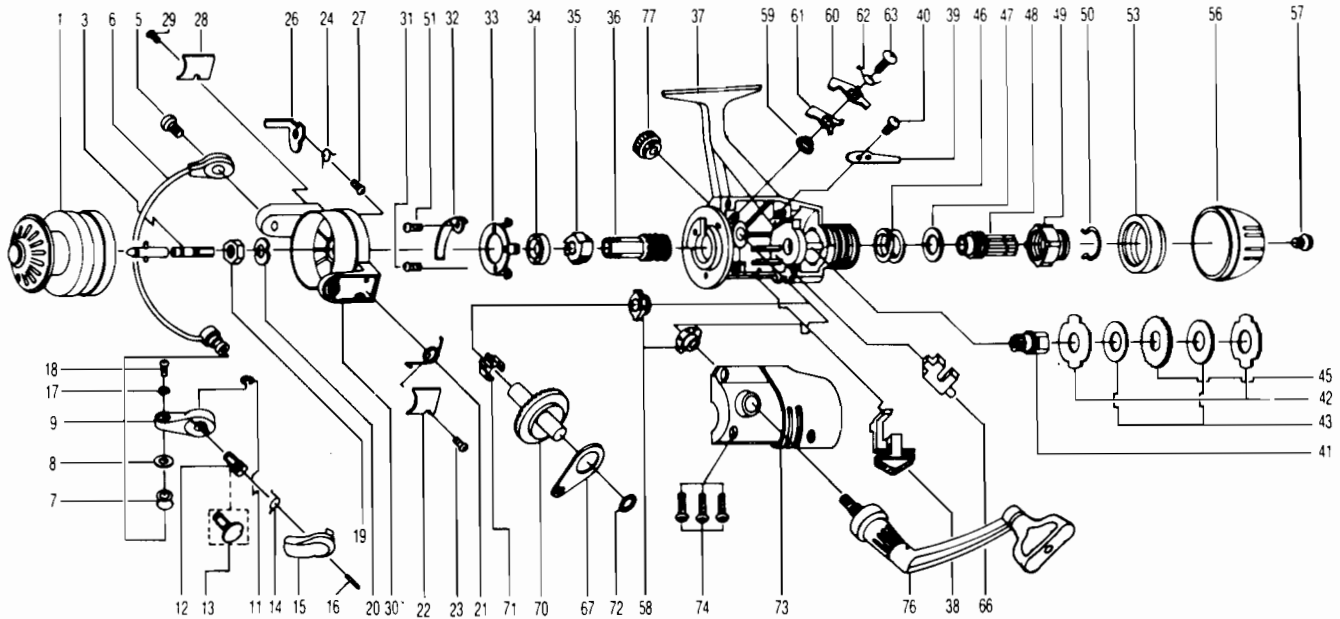


# ZEBCO PSG05



**KEY PART  
NO. NO.**

NO. NO.	DESCRIPTION
1 BT321	SPOOL ASSY. - PSG05
2 BT315	MAIN SHAFT ASSY
5 BT048	BAIL HOLDER SCREW
6 BT347	BAIL ARM ASSY.
7 VB004	LINE ROLLER
8 VB016	LN ROLLER BUSHING
9 BT007	ARM LEVER
11 BT002	E-CLIP
12 BT113	TRIGGER HOLDER
13 BT111	ARM LEVER CAP
14 BT114	TRIGGER SPRING
15 BT115	TRIGGER
16 BT116	TRIGGER PIN
17 VB102	BAIL AXLE WASHER
18 VB108	BAIL AXLE SCREW
19 VB006	ROTOR NUT
20 BT065	ROTOR RETAINER
21 BT022	BAIL SPRINGS
22 BT087	BAIL SPRING COVER
23 BT085	BAIL SPR. COVER SCREW
24 BT049	KICK LEVER SCREW
26 BT019	KICK LEVER
27 BT037	KICK LEVER SCREW
28 BT024	KICK LEVER COVER
29 BT085	BAIL SPR. COVER SCREW
30 BT009	ROTOR ASSY
31 BT080	BEARING PLATE SCREW
32 BT082	KICK LEVER GUIDE
33 BT040	BEARING PLATE
34 RB028	BALL BEARING
35 BT060	RATCHET GEAR
36 BT011	PINTON GEAR
37 BT301	BODY ASSY
38 BT059	ANTI-REVERSE LEVER

**KEY PART  
NO. NO.**

NO. NO.	DESCRIPTION
39 BT068	CLICK CLAW
40 BT067	CLICK CLAW SCREW
41 BT104	SLIDER HOLDER
42 BT030	REAR DRAG WASHER "A"
43 BT039	REAR DRAG WASHER "B"
44 BT071	REAR DRAG WASHER "D"
45 BT066	CLICK GEAR
46 BT031	REAR DRAG COIL SPR.
47 BT046	REAR DRAG ADJ. WSHR.
48 BT112	REAR DRAG NUT
49 BT017	SLIDING SCREW
50 BT033	BACK CLICK CLAW
51 BT182	KICK LEVER GUIDE SCR
53 BT132	REAR DRAG STOPPER
56 BT032	REAR DRAG CAP
57 VB079	DRAG SCREW
58 BT013	BODY COVER BUSHING
59 BT014	A/R CLAW BUSHING
60 BT063	A/R CLAW (N)
61 BT064	A/R CLAW (S)
62 BT061	A/R CLAW SPRING
63 BT089	A/R CLAW SCREW
66 BT081	PIN SLIDER
67 BT025	OSCILLATING SLIDER
70 BT012	DRIVE GEAR
71 BT086	SLIDING SPRING
72 RB026	CRANK GEAR SHIM
73 BT323	BODY COVER ASSY.
74 BT057	BODY COVER SCREW
76 VB318	HANDLE ASSY
77 BT073	HANDLE SCREW CAP
* 79 BT120	ROTOR RET. SPRG. W/S

\*Not shown in diagram  
Fits between keys 19 & 20

WWW.REELDR.COM

*Handwritten notes:*  
PS 10  
Fits between keys 19 & 20

Prices subject to change without notice. Prices do not include postage and handling.

**PLEASE ORDER BY PART NUMBER**

Rev. 9/88

Zebco Division Brunswick Corporation, Box 270, Tulsa, OK 74101 USA 918-836-5581

