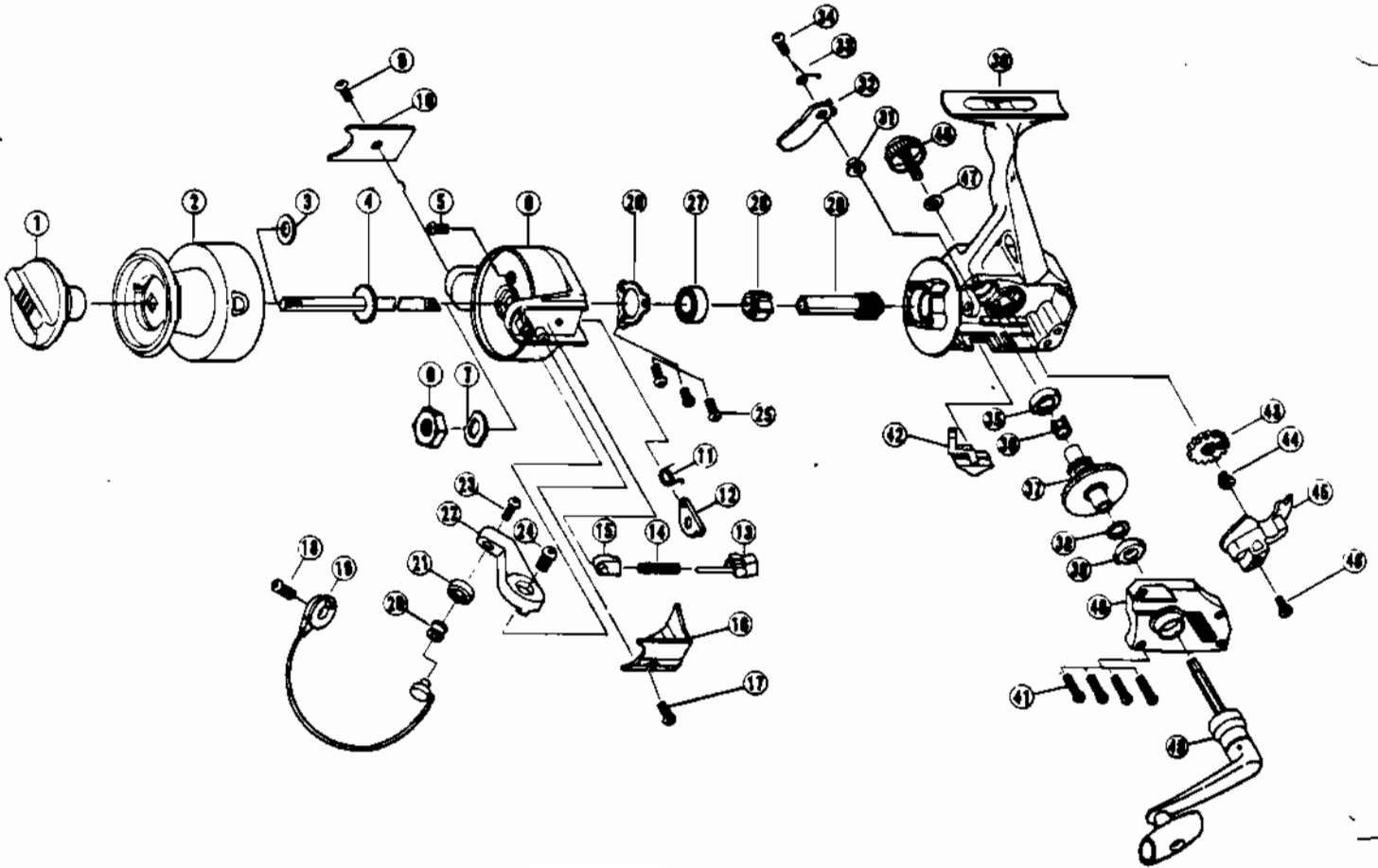


ZEBCO PS70



KEY PART NO.	NO.
1	UL332
2	VL321
3	UL046
4	UL315
5	UL094
6	UL006
7	UL065
8	VL009
9	UL085
10	UL024
11	VL049
12	UL019
13	UL031
14	UL022
15	UL020
16	VL087
17	UL085
18	UL051
19	VL347
20	UL004
21	UL017
22	UL007
23	UL108
24	UL107
25	UL080
26	UL040

DESCRIPTION
DRAG KNOB ASSY.
SPOOL ASSY.
SPOOL ADJ. WASHER
MAIN SHAFT ASSY.
ROTOR NUT LOCK SCREW
ROTOR NUT
ROTOR RETAINER WASHER
ROTOR
KICK LEVER COVER SCREW
KICK LEVER COVER
KICK LEVER SPRING
KICK LEVER
SPRING SHAFT
BAIL SPRING
SPRING HOLDER
BAIL SPRING COVER
KICK LEVER COVER SCREW
BAIL HOLDER SCREW
BAIL ASSY.
LINE ROLLER
BAIL COLLAR
ARM LEVER
BAIL SCREW <i>DRILL & RISE</i>
ARM LEVER SCREW
BEARING PLATE SCREW
BEARING PLATE

KEY PART NO.	NO.
27	UL028
28	UL060
29	UL011
30	VL001
31	UL091
32	UL063
33	UL061
34	UL083
35	UL013
36	VL086
37	UL012
38	UL028
39	UL013
40	VL023
41	UL057
42	UL059
43	VL053
44	UL035
45	UL081
46	UL181
47	UL076
48	UL073
49	VL318

DESCRIPTION
BALL BEARING
RATCHET
PINION GEAR
BODY
STOPPER BUSHING
STOPPER
STOPPER SPRING
STOPPER SCREW
BODY BUSHING
SILENT CAM
DRIVE GEAR
DRIVE GEAR ADJ. WASHER
BODY BUSHING
BODY COVER
BODY COVER SCREW
STOPPER LEVER
OSCILLATING GEAR
O/S GEAR SCREW
O/S
O/S SCREW
HANDLE CAP WASHER
HANDLE SCREW CAP
HANDLE ARM

WWW.REELDR.COM

Prices subject to change without notice. Prices do not include postage and handling.

PLEASE ORDER BY PART NUMBER

Rev. 11/90

Zebco Division Brunswick Corporation, Box 270, Tulsa, OK 74101 USA 918-836-5581

