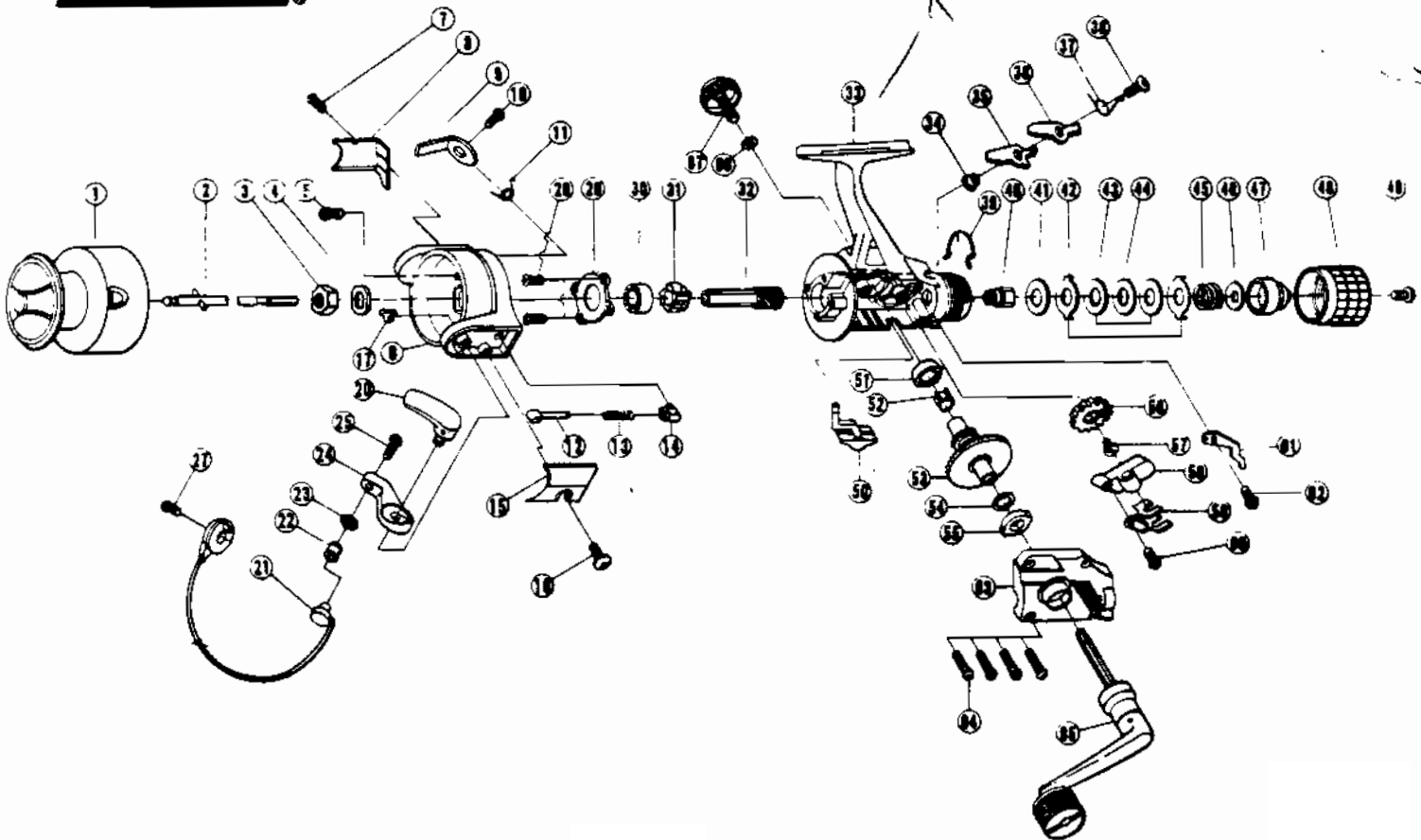


TEBCO PS40



KEY PART NO. NO.

KEY PART NO. NO.	DESCRIPTION
1 TL321	SPOOL ASSY.
2 TL315	MAIN SHAFT ASSY.
3 TL006	ROTOR NUT
4 TL065	ROTOR RETAINER WASHER
5 RL094	ROTOR NUT LOCK SCREW
6 TL009	ROTOR
7 RL085	COVER/CLICK CLAW SCREW
8 TL024	KICK LEVER COVER
9 TL019	KICK LEVER
10 RL037	KICK LEVER SCREW
11 TL049	KICK LEVER SPRING
12 TL031	SPRING SHAFT
13 TL022	BAIL SPRING
14 TL020	SPRING HOLDER
15 TL087	BAIL SPRING COVER
16 RL085	COVER/CLICK CLAW SCREW
17 RL034	E-CLIP
20 RL115	TRIP LEVER
21 TL347	BAIL ASSY.
22 TL004	LINE ROLLER
23 TL017	BAIL COLLAR
24 TL007	ARM LEVER
25 SL108	BAIL SCREW
27 TL051	BAIL HOLDER SCREW
28 TL080	BEARING PLATE SCREW
29 TL040	BEARING PLATE
30 TL028	BALL BEARING
31 TL060	RATCHET GEAR
32 TL011	PINION GEAR
33 TL001	BODY
34 RL091	STOPPER BUSHING
35 TL064	STOPPER 'A'

KEY PART NO. NO.

KEY PART NO. NO.	DESCRIPTION
36 TL063	STOPPER 'B'
37 TL061	STOPPER SPRING
38 RL083	STOPPER SCREW
39 TL033	DRAG CLICK CLAW METAL
40 TL075	DRAG 'B' WASHER - 1
41 TL038	DRAG 'A' WASHER
42 TL030	DRAG 'B' WASHER - 2
43 TL039	DRAG 'D' WASHER
44 TL066	DRAG COIL SPRING
45 TL043	DRAG ADJUSTING WASHER
46 TL046	DRAG NUT
47 TL029	DRAG CAP
48 TL032	DRAG CAP SCREW
49 RL079	STOPPER LEVER
50 TL059	BODY/BODY COVER BUSHING
51 RL013	SILENT CAM
52 TL086	DRIVE GEAR
53 TL012	DRIVE GEAR ADJ. WASHER
54 RL026	BODY/BODY COVER BUSHING
55 RL013	O/S PLATE GEAR
56 TL053	O/S SLIDER
58 TL081	SLIDER STOPPER
59 TL078	SLIDER STOPPER SCREW
60 TL161	CLICK CLAW
61 TL068	COVER/CLICK CLAW SCREW
62 RL085	BODY COVER
63 TL023	BODY COVER SCREW
64 SL057	HANDLE ASSY.
65 TL318 = 42W	HANDLE SCREW CAP WASHER
66 SL076	HANDLE SCREW CAP
67 PL073	KICK LEVER GUIDE
68 TL082	

WWW.REELDR.COM

Prices subject to change without notice. Prices do not include postage and handling.

PLEASE ORDER BY PART NUMBER

Rev. 11/90

Tebco Division Brunswick Corporation, Box 270, Tulsa, OK 74101 USA 918-836-5581

