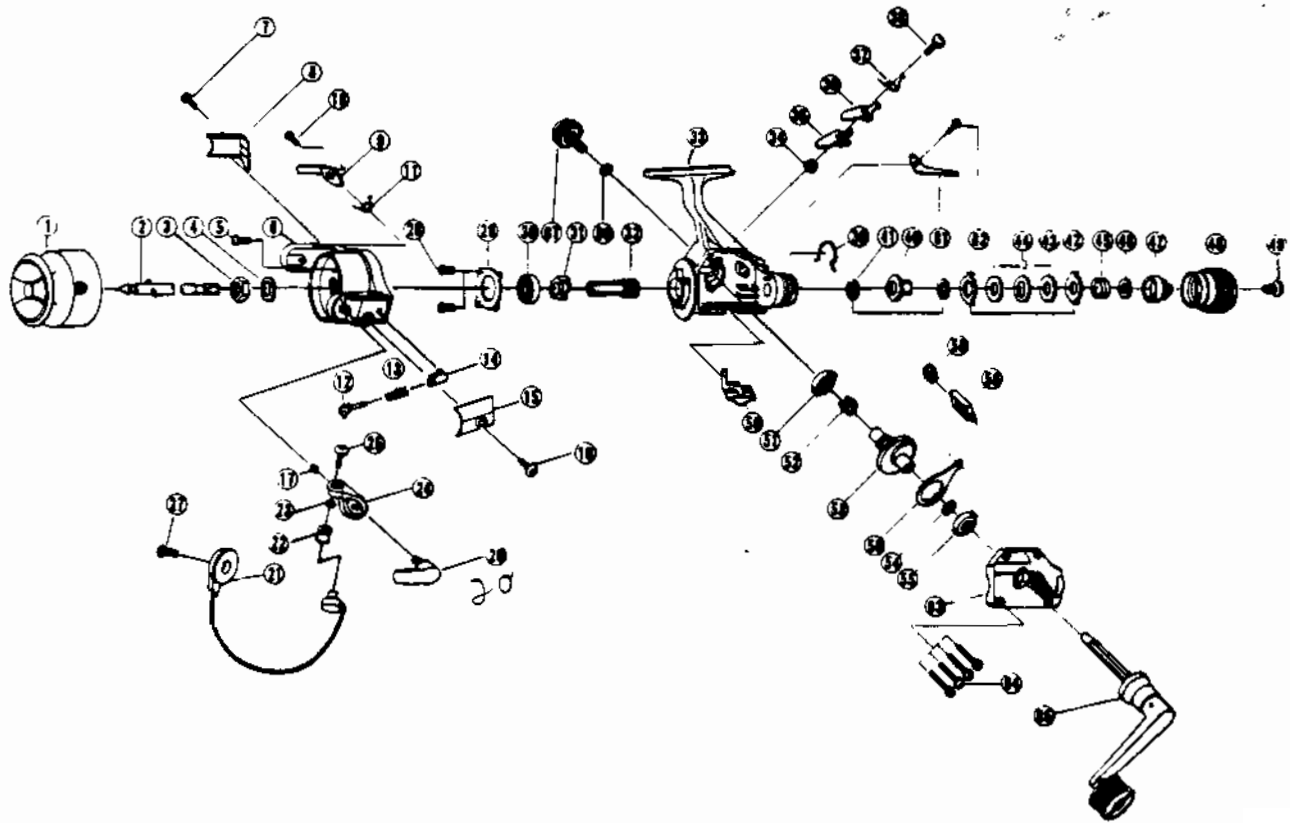


TEBCO PS20



**KEY PART
NO. NO.**

1	SL321	SPOOL ASSY.
2	SL315	MAIN SHAFT ASSY.
3	RL006	ROTOR NUT
4	RL065	ROTOR 'D' WASHER
5	RL094	ROTOR NUT LOCK SCREW
6	SLO09	ROTOR
7	RL085	COVER/CLICK CLAW SCREW
8	SLO24	KICK LEVER COVER
9	SLO19	KICK LEVER
10	RL037	KICK LEVER SCREW
11	RL049	KICK LEVER SPRING
12	RL031	SPRING SHAFT
13	RL022	BAIL SPRING
14	RL020	SPRING HOLDER
15	SLO87	BAIL SPRING COVER
16	RL085	COVER/CLICK CLAW SCREW
17	RL034	E-CLIP
20	RL115	TRIP LEVER
21	SL347	BAIL ASSY.
22	SLO04	LINE ROLLER
23	SLO17	BAIL COLLAR
24	SLO07	ARM LEVER
25	SL108	BAIL SCREW
27	RL051	BAIL HOLDER SCREW
28	SLO80	BEARING PLATE SCREW
29	RL040	BEARING PLATE
30	RL028	BALL BEARING
31	RL060	RATCHET GEAR
32	SLO11	PINTON GEAR
33	SLO01	BODY
34	RL091	STOPPER BUSHING
35	RL064	STOPPER 'A'
36	RL063	STOPPER 'B'

**KEY PART
NO. NO.**

37	RL061	STOPPER SPRING
38	RL083	STOPPER SCREW
39	SLO33	DRAG CLICK CLAW
40	RL075	METAL
41	SLO38	DRAG 'B' WASHER - 1
42	RL030	DRAG 'A' WASHER
43	SLO39	DRAG 'B' WASHER - 2
44	RL066	DRAG 'D' WASHER
45	RL043	DRAG COIL SPRING
46	RL046	DRAG ADJUSTING WASHER
47	RL029	DRAG NUT
48	SLO32	DRAG CAP
49	RL079	DRAG CAP SCREW
50	RL059	STOPPER LEVER
51	RL013	BODY/BODY COVER BUSHING
52	RL086	SILENT CAM
53	SLO12	DRIVE GEAR
54	RL026	DRIVE GEAR ADJ. WASHER
55	RL013	BODY/BODY COVER BUSHING
56	SLO25	O/S SLIDER
58	SLO81	PIN SLIDER
59	SLO78	SLIDER STOPPER
61	RL068	CLICK CLAW
62	RL085	COVER/CLICK CLAW SCREW
63	SLO23	BODY COVER
64	SLO57	BODY COVER SCREW
65	SL318	HANDLE ASSY.
66	SLO76	HANDLE SCREW CAP WASHER
67	SLO73	HANDLE SCREW CAP
68	RL082	KICK LEVER GUIDE

WWW.REELDR.COM

Prices subject to change without notice. Prices do not include postage and handling.

PLEASE ORDER BY PART NUMBER

Rev. 11/90

Tebco Division Brunswick Corporation, Box 270, Tulsa, OK 74101 USA 918-836-5581