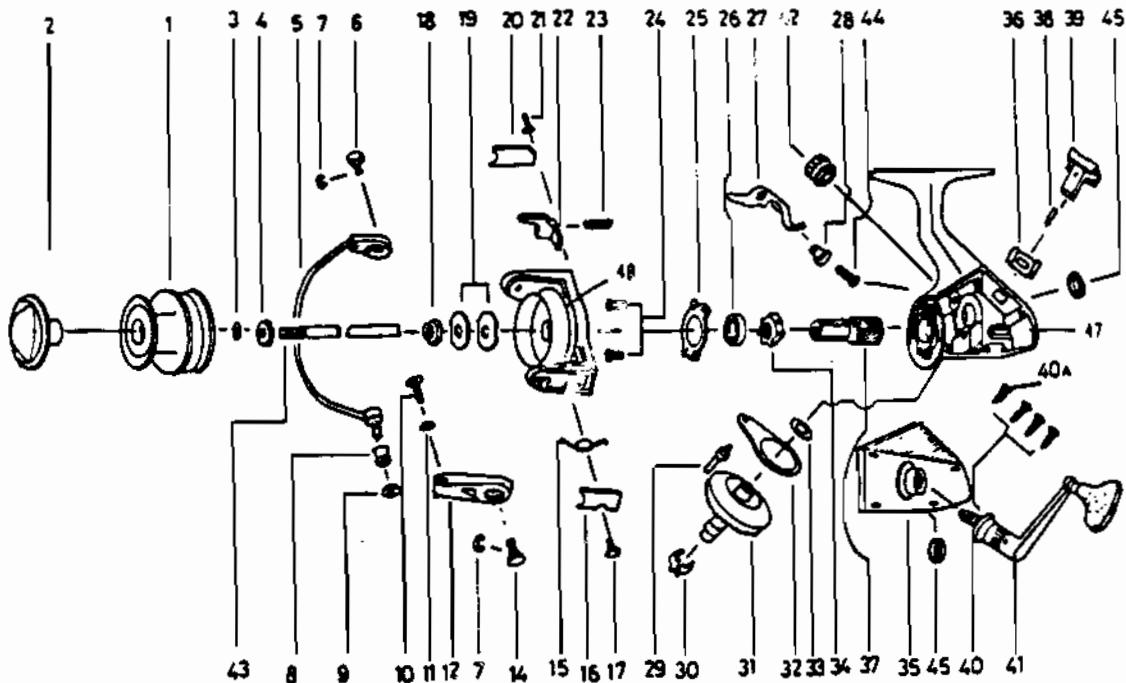


ZEBCO PS2



KEY PART NO. NO.

1	WL321	SPOOL ASSY.
2	MK050	DRAG KNOB ASSY.
3	LK030	SPOOL ADJ. WASHER
4	LK066	CLICK GEAR
5	NS347	BAIL ARM ASSY.
6	NS044	BAIL HOLDER PIN
7	NS002	E-CLIP
8	LK004	LINE ROLLER
9	NS017	BAIL COLLAR
10	NS108	BAIL SCREW
11	NS102	BAIL WASHER
12	NS007	ARM LEVER
14	NS043	ARM LEVER PIN
15	NS022	BAIL SPRING
16	NS087	BAIL SPRING COVER
17	NS085	BAIL SPRING CVR SCR
18	NS006	ROTOR NUT
19	NS065	ROTOR RET. WASHER
20	NS024	KICK LEVER COVER
21	NS037	KICK LVR CVR SCR
22	NS019	KICK LEVER
23	NS049	KICK LEVER SPRING
24	NS080	BEARING PLATE SCREW
25	NS040	BEARING PLATE

KEY PART NO. NO.

26	LK028	BEARING
27	LK063	ANTI-REVERSE CLAW
28	NS014	A/R CLAW BUSHING
29	NS081	OSC. SLIDER PIN
30	NS086	SLIDING SPRING
31	NS012	DRIVE GEAR
32	NS025	OSCILLATING SLIDER
33	NS026	DRIVE GEAR ADJ. WSHR
34	NS060	RATCHET GEAR
35	WL023	BODY COVER
36	NS090	A/R LVR. PLATE SPR.
37	LK011	PINION GEAR
38	NS091	A/R LVR. PIN
39	NS059	ANTI-REVERSE LEVER
40	LK057	BODY COVER SCREW
40	NS057	BODY COVER SCREW
41	MK318	HANDLE ASSY.
42	LK073	HANDLE SCREW CAP
43	LK315	MAIN SHAFT
44	NS089	A/R CLAW SCREW
45	NS013	BODY BUSHING
47	WL001	BODY
48	GLO09	ROTOR

WWW.REELDR.COM

Prices subject to change without notice. Prices do not include postage and handling.

PLEASE ORDER BY PART NUMBER

Rev. 11/90

Zebco Division Brunswick Corporation, Box 270, Tulsa, OK 74101 USA 918-836-5581

