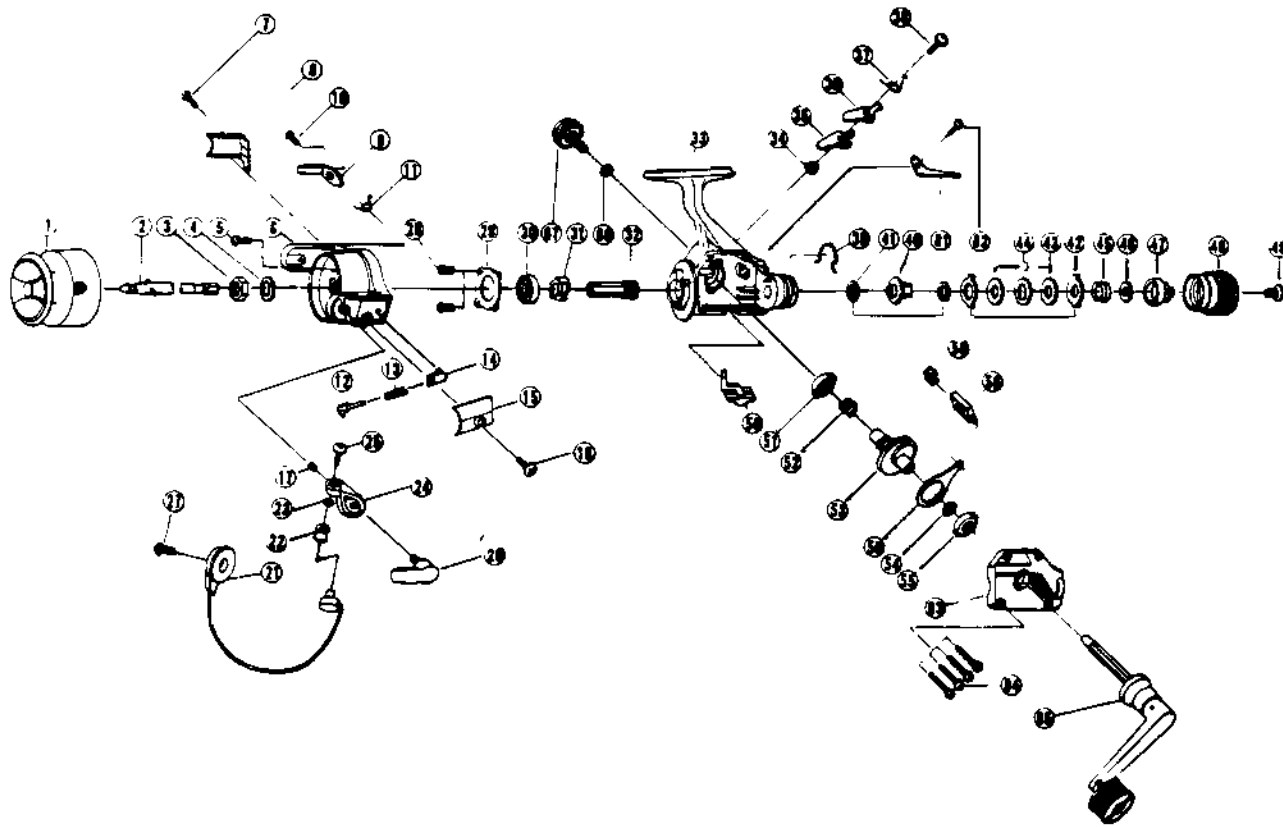


# ZEBCO PS05



KEY PART NO. NO.	DESCRIPTION
1 RL321	SPOOL ASSY.
2 RL315	MAIN SHAFT ASSY.
3 RL006	ROTOR NUT
4 RL065	ROTOR 'D' WASHER
5 RL094	ROTOR NUT LOCK SCREW
6 RL009	ROTOR
7 RL085	COVER/CLICK CLAW SCREW
8 RL024	KICK LEVER COVER
9 RL019	KICK LEVER
10 RL037	KICK LEVER SCREW
11 RL049	KICK LEVER SPRING
12 RL031	SPRING SHAFT
13 RL022	BAIL SPRING
14 RL020	SPRING HOLDER
15 RL087	BAIL SPRING COVER
16 RL085	COVER/CLICK CLAW SCREW
17 RL034	E-CLIP
20 RL115	TRIP LEVER
21 RL347	BAIL ASSY.
22 RL004	LINE ROLLER
23 RL017	BAIL COLLAR
24 RL007	ARM LEVER
25 RL108	BAIL SCREW
27 RL051	BAIL HOLDER SCREW
28 RL080	BEARING PLATE SCREW
29 RL040	BEARING PLATE
30 RL028	BALL BEARING
31 RL060	RATCHET GEAR
32 RL011	PINION GEAR
33 RL001	BODY
34 RL091	STOPPER BUSHING
35 RL064	STOPPER 'A'
36 RL063	STOPPER 'B'

KEY PART NO. NO.	DESCRIPTION
37 RL061	STOPPER SPRING
38 RL083	STOPPER SCREW
39 RL033	DRAG CLICK CLAW METAL
40 RL075	METAL
41 RL038	DRAG 'B' WASHER - 1
42 RL030	DRAG 'A' WASHER
43 RL039	DRAG 'B' WASHER - 2
44 RL066	DRAG 'D' WASHER
45 RL043	DRAG COIL SPRING
46 RL046	DRAG ADJUSTING WASHER
47 RL029	DRAG NUT
48 RL032	DRAG CAP
49 RL079	DRAG CAP SCREW
50 RL059	STOPPER LEVER
51 RL013	BODY/BODY COVER BUSHING
52 RL086	SILENT CAM
53 RL012	DRIVE GEAR
54 RL026	DRIVE GEAR ADJ. WASHER
55 RL013	BODY/BODY COVER BUSHING
56 RL025	O/S SLIDER
58 RL081	SLIDER PIN
61 RL068	CLICK CLAW
62 RL085	COVER/CLICK CLAW SCREW
63 RL023	BODY COVER
64 RL057	BODY COVER SCREW
65 RL318	HANDLE ASSY.
66 RL076	HANDLE SCREW CAP WASHER
67 RL073	HANDLE SCREW CAP
68 RL082	KICK LEVER GUIDE

[WWW.REELDR.COM](http://WWW.REELDR.COM)

Prices subject to change without notice. Prices do not include postage and handling.

**PLEASE ORDER BY PART NUMBER**

Rev. 11/90

Zecco Division Brunswick Corporation, Box 270, Tulsa, OK 74101 USA 918-836-5581

