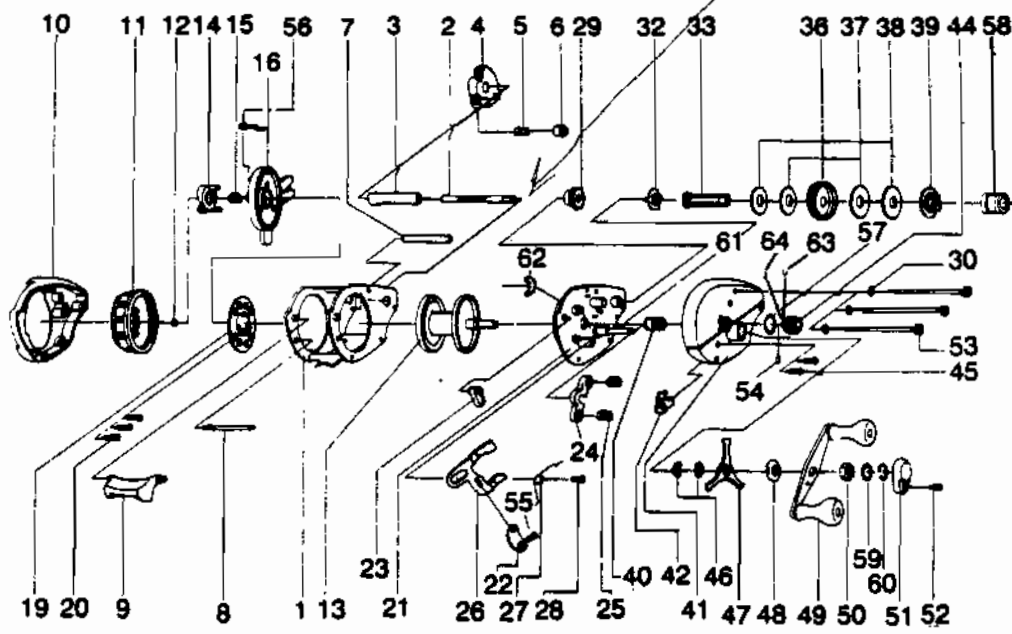


*Chm 4011 to ease to take out play*



KEY PART NO.	DESCRIPTION
1	GX4051 WRENCH
2	GX4151 FRAME
3	GX4158 WORM SHAFT
4	GX4201 WORM GEAR GUARD
5	GX4202 LINE GUIDE CARRIER ASSY
6	GX4204 LINE GUIDE PAWL
7	GX4159 LINE GUIDE CARRIER SCR
8	GX4160 CARRIER GUIDE
9	GX4404 FRAME FIXED PIN
10	GX4101 THUMB BAR
11	GX4303 LEFT SIDE COVER ASSY
12	GX4250 CONTROL DIAL ASSY
13	GX4251 DIAL FRICTION RING
14	GX4261 SPOOL ASSY
15	GX4301 MAGNET RETAINER SUPPORT
16	GX4108 MAGNET RETAINER SPRING
19	GX4257 SPOOL COVER ASSY
20	GX4602 MAGNET PLATE ASSY
21	GX4351 MAGNET PLATE SCREW
22	GX4405 SET PLATE ASSY
23	GX4406 LINK
24	GX4401 THUMB BAR CAM
25	GX4403 PINION YOKE
26	GX4402 PINION YOKE SPR
27	GX4502 RELEASE SLIDER
28	GX4656 SPOOL REL. SPRING
29	GX4150 RELEASE SLIDER SCREW
30	GX4109 OSCILLATOR GEAR
32	GX4655 FRAME SCREW WSHR
33	GX4652 CONTROL ELEMENT
	GX4652 CRANK SHAFT

KEY PART NO.	DESCRIPTION
36	GX4651 DRIVE GEAR
37	GX4659 DRAG WASHER "B"
38	GX4653 DRAG WASHER "D"
39	GX4451 ANTI-REVERSE
40	GX4256 PINION GEAR ASSY
41	GX4103 RIGHT SIDE COVER
42	GX4452 ANTI-REVERSE PAWL
44	GX4259 SPOOL TENSION KN. ASSY
45	GX4352 RIGHT SIDE CVR SCR
46	GX4662 SPRING WASHER
47	GX4663 STAR DRAG
48	GX4660 HANDLE WASHER
49	GX4701 HANDLE ASSY
50	GX4702 HANDLE NUT
51	GX4703 HANDLE NUT LOCK
52	GX4704 HANDLE NUT LOCK SCR
53	GX4104 FRAME SCREW
54	GX4302 SPOOL TNSN. KN. WSHR. (FL)
55	GX4506 LINK SCREW
56	GX4556 CLICK CLAW
57	GX4258 SPOOL TENSION KN. RING
58	GX4254 RIGHT SIDE CVR BUSHING
59	GX4105 SET PLATE SHAFT WSHR
60	GX4657 CRANK SHAFT S-CLIP
61	GX4664 SET PLATE SHAFT
62	GX4665 SHAFT CLIP-E
63	GX4308 SPOOL TEN. KN. WSHR (RB)
64	GX4304 SPOOL TEN. KN. WSHR (SQ)

\* Note: Parts not used on initial production of reels.  
 \*\* Reels produced prior June 1986 (F6) need to order keys 4-6 as a set.

[WWW.REELDR.COM](http://WWW.REELDR.COM)

Prices subject to change without notice. Prices do not include postage and handling.  
**PLEASE ORDER BY PART NUMBER**  
 Rev. 11/90

Zebco Division Brunswick Corporation, Box 270, Tulsa, OK 74101 USA 918-636-5581

