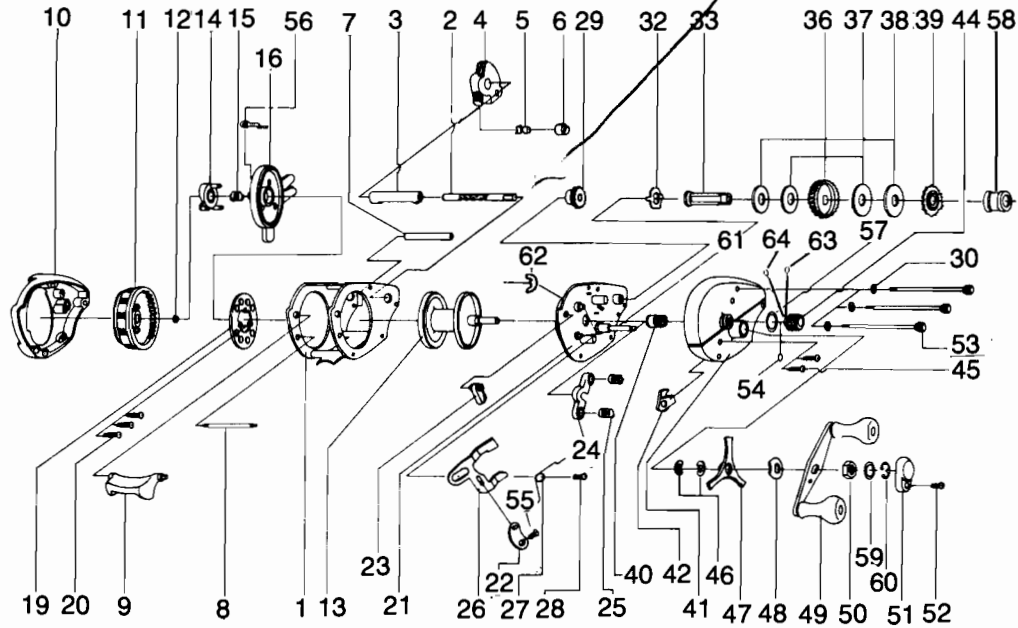


*6 lbs 430 h
wrench*



KEY PART

NO. NO.	DESCRIPTION
1 GX4051	FRAME
2 GX4151	WORM SHAFT
3 GX4158	WORM GEAR GUARD
4 GX4201	LINE GUIDE CARRIER ASSY
5 GX4202	LINE GUIDE PAWL
6 GX4204	LINE GUIDE CARRIER SCR
7 GX4159	CARRIER GUIDE
8 GX4160	FRAME FIXED PIN
9 GX4404	THUMB BAR
10 GX4101	LEFT SIDE COVER ASSY
11 GX4303	CONTROL DIAL ASSY
12 GX4250	DIAL FRICTION RING
13 GX4251	SPOOL ASSY
14 GX4261	MAGNET RETAINER SUPPORT
15 GX4301	MAGNET RETAINER SPRING
16 GX4108	SPOOL COVER ASSY
19 GX4257	MAGNET PLATE ASSY
20 GX4602	MAGNET PLATE SCREW
21 GX4351	SET PLATE ASSY
22 GX4405	LINK
23 GX4406	THUMB BAR CAM
24 GX4401	PINION YOKE
25 GX4403	PINION YOKE SPR
26 GX4402	RELEASE SLIDER
27 GX4502	SPOOL REL. SPRING
28 GX4656	RELEASE SLIDER SCREW
29 GX4150	OSCILLATOR BEAR
30 GX4109	FRAME SCREW WSHR
32 GX4655	CONTROL ELEMENT
33 GX4652	CRANK SHAFT

KEY PART

NO. NO.	DESCRIPTION
36 GX4651	DRIVE GEAR
37 GX4659	DRAG WASHER "B"
38 GX4653	DRAG WASHER "D"
39 GX4451	ANTI-REVERSE
40 GX4256	PINION GEAR ASSY
41 GX4103	RIGHT SIDE COVER
42 GX4452	ANTI-REVERSE PAWL
44 GX4259	SPOOL TENSION KN. ASSY
45 GX4352	RIGHT SIDE CVR SCR
46 GX4662	SPRING WASHER
47 GX4663	STAR DRAG
48 GX4660	HANDLE WASHER
49 GX4701	HANDLE ASSY
50 GX4702	HANDLE NUT
51 GX4703	HANDLE NUT LOCK
52 GX4704	HANDLE NUT LOCK SCR
53 GX4104	FRAME SCREW
54 GX4302	SPOOL TNSN. KN. WSHR. (FL)
55 GX4506	LINK SCREW
56 GX4556	CLICK CLAW
57 GX4258	SPOOL TENSION KN. RING
58 GX4254	RIGHT SIDE CVR BUSHING
59 GX4105	SET PLATE SHAFT WSHR
60 GX4657	CRANK SHAFT E-CLIP
61 GX4664	SET PLATE SHAFT
62 GX4665	SHAFT CLIP-E
63 GX4305	SPOOL TEN. KN. WSHR (RB)
64 GX4304	SPOOL TEN. KN. WSHR (SQ)
T130	WRENCH

WWW.REELDR.COM

* Note: Parts not used on initial production of reels.
 ** Reels produced prior June 1986 (F6) need to order keys 4-6 as a set.

Prices subject to change without notice. Prices do not include postage and handling.

PLEASE ORDER BY PART NUMBER

Rev. 9/88

Zebco Division Brunswick Corporation, Box 270, Tulsa, OK 74101 USA 918-836-5581

