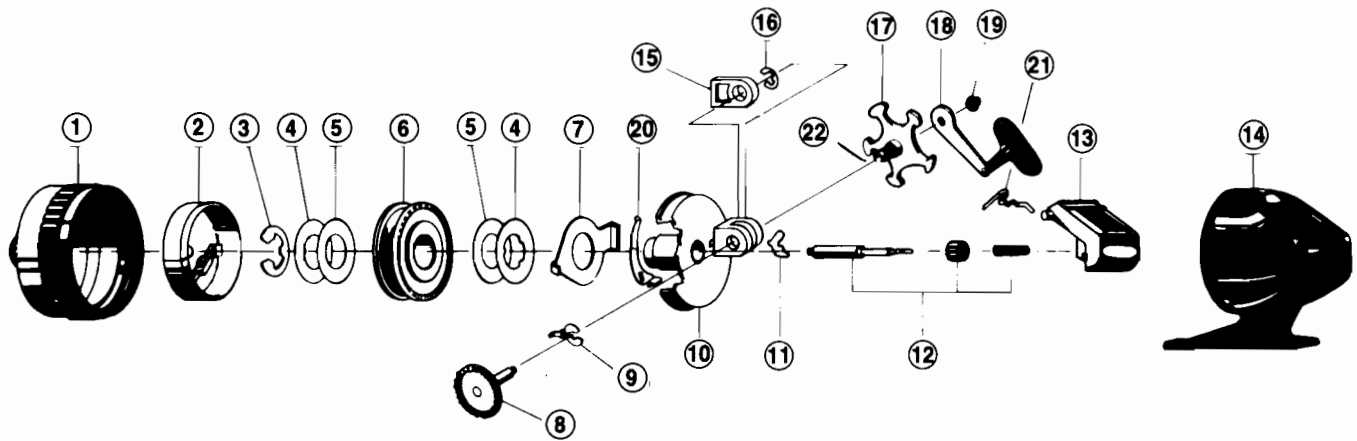


# TEBCO® pro staff™ FT15-FT25-FT35



KEY NO.	DESCRIPTION	Model	Model	Model
		FT15	FT25	FT35
		PART	PART	PART
1	FRONT COVER ASSY.	QY324-3	JY324-5	KY324-3
2	SPINNER HEAD ASSEMBLY	QY310	JY310	KY310
3	SPOOL CLIP	XZ034	GZ034	GZ034
4	SPOOL WASHER	BJ040	JY040	CJ040
5	FLAT WASHER	BJ108	JY108	CJ108
6	SPOOL	QY021	JY021	KY021
6	WOUND SPOOL W/ LINE	QY321-6H	JY321-8H	KY321-14H
7	CLUTCH RING	QY027	NY027	KY027
8	CRANK SHAFT ASSEMBLY	QY308	JY308	KY308
9	PAWL ACTUATOR	JY061	JY061	JY061
10	BODY ASSEMBLY	QY301	JY301	KY301
11	ANTI-REVERSE PAWL	JY060	JY060	JY060
12	CENTERSHAFT ASSEMBLY	QY315	JY315	KY315
13	THUMB STOP	QY009-2	JY009-2	JY009-2
14	BACK COVER ASSY.	QY323-3	JY323-3	KY323-3
15	SLIDE DRAG ACTUATOR	JY054	JY054	KY054
16	RETAINER CLIP	JY121	JY121	JY121
17	DRAG STAR	QY032-1	JY032-1	KY032-1
18	HANDLE ASSEMBLY	QY318-2	JY318-2	KY318-2
19	CRANK NUT	AZ003	AZ003	AZ003
20	RATCHET SPRING	RY033	RY033	
21	THUMB STOP SPRING	QY038	QY038	KY038
* 22	CRANK SHAFT BUSHING	QY026-3	WY026	KY026-5

\* FT15 and FT25 models use one piece Crank Bushing/Star Drag before February 1987. Order part number QY026 for FT15 and JY026 for FT25. FT35 models produced before October 1986 use KY026 one piece Crank Bushing/Star Drag. Order part number KY026.

[WWW.REELDR.COM](http://WWW.REELDR.COM)

Prices subject to change without notice. Prices do not include postage and handling.

**PLEASE ORDER BY PART NUMBER**

Rev. 9/88

Tebco Division Brunswick Corporation, Box 270, Tulsa, OK 74101 USA 918-836-5581

