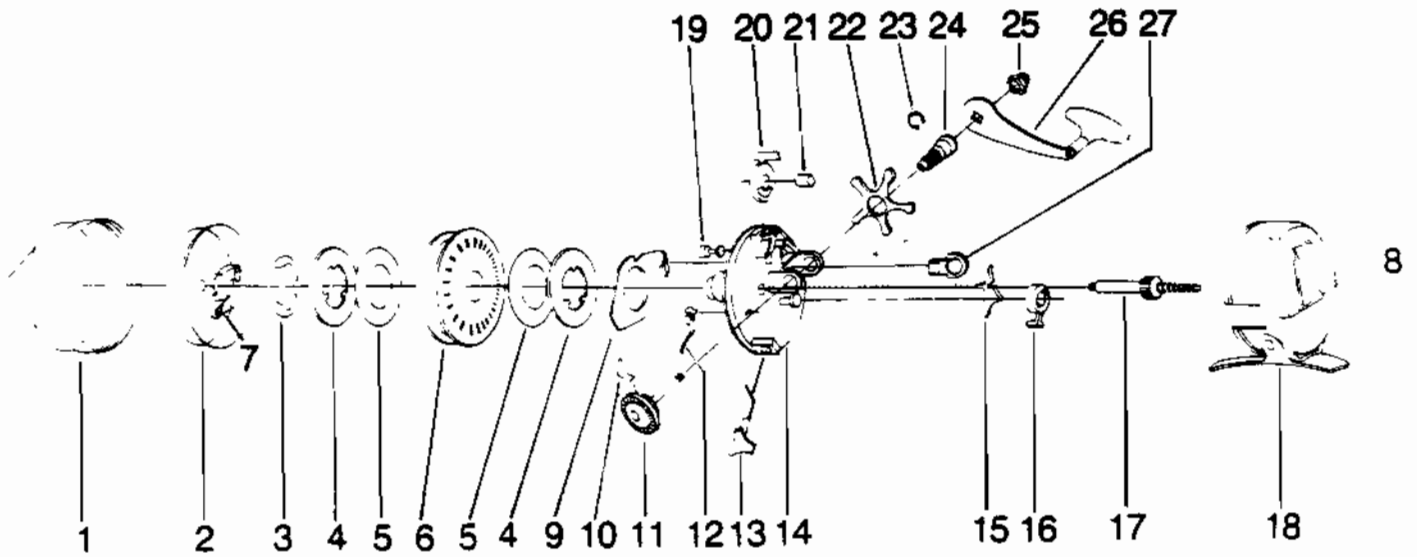


ZEBCO pro staff™ 888 (PowerLever Drag)



KEY PART

NO.	NO.	DESCRIPTION
1	FE324-1	FRONT COVER S/A
2	EE310-1	SPINNERHEAD ASSY.
3	GZ034-1	SPOOL RETAINER CLIP
4	CJC040-1	SPOOL WASHER (METAL)
5	EE108	SPOOL WASHER
6	EE021	SPOOL
6	EE321-25H	WOUND SPOOL W/25# MONO HI
7	PZ049	PICK-UP PIN SPRING
8	PY009	THUMB STOP
9	FE027	CLUTCH RING
10	EE052	ANTI-REVERSE DRAG
11	EE308	CRANK SHAFT ASSY.
12	RY033	RATCHET SPRING
13	EE014	BAIT CLICKER
14	EE301	808/888 BODY S/A
15	EE063	ANTI-REVERSE PAWL
16	EE002	A/R ACTUATOR
17	EE315	CENTER SHAFT S/A
18	EE323-2	BACK COVER S/A
19	FE090	SPOOL LOCK PISTON
20	FE164	SPOOL LOCK LEVER
21	FE103	POWER LEVER LOCK PIN
22	FE032	DRAG STAR
23	EE121	RETAINER CLIP
24	FE026	CRANK SHAFT BUSHING
25	QZ003	CRANK NUT
26	PY318-4	CRANK HANDLE S/A
27	FE054	SLIDE ACTUATOR

WWW.REELDR.COM

Prices subject to change without notice. Prices do not include postage and handling.

PLEASE ORDER BY PART NUMBER

Rev. 11/90

Zebco Division Brunswick Corporation, Box 270, Tulsa, OK 74101 USA 918-636-5581

