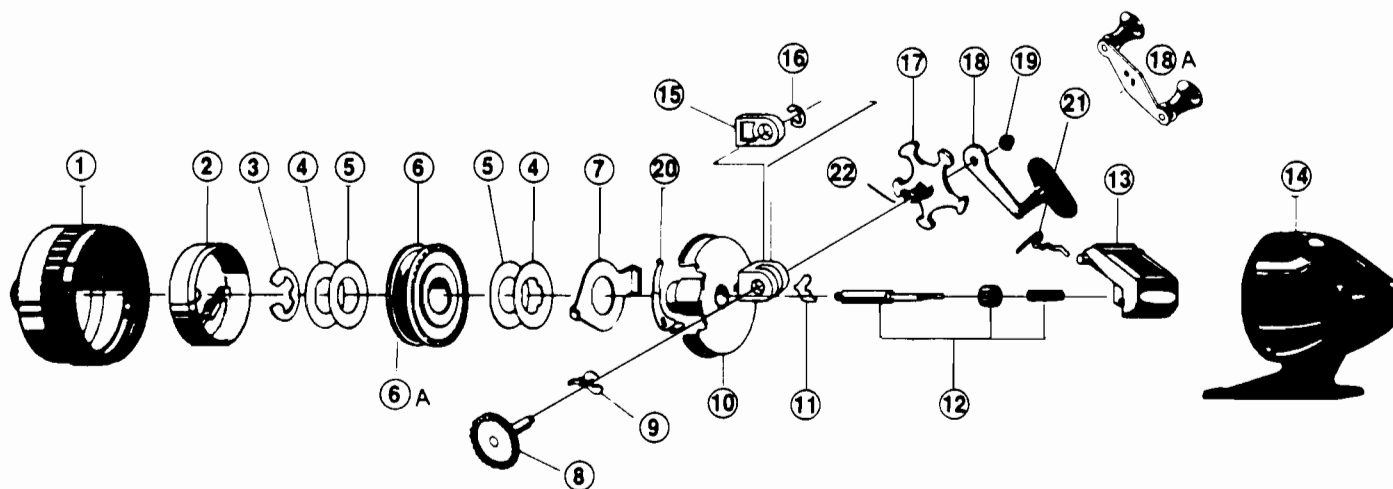


# ZEBCO Pro Staff 2010, 2020, 2030



## Model 2010

## Model 2020

## Model 2030

KEY NO.	DESCRIPTION	PART NO.	PART NO.	PART NO.
1	FRONT COVER S/A	QY324-4	JY324-8	KY324-4
2	SPINNER HEAD ASSEMBLY	QY310	JY310	KY310
3	SPOOL CLIP	XZ034	JY034	BY034
* 4	SPOOL WASHER	BJ040	JY040	CJ040
* 5	FLAT WASHER	BJ108	JY108	CJ108
6	SPOOL	QY021	JY021	KY021
6	WOUND SPOOL W/ LINE 6#	QY321-6H	JY321-8H	KY321-14H
6 A	SPOOL LIP WASHER	QY036		
7	CLUTCH RING	QY027	NY027	KY027
8	CRANK SHAFT ASSEMBLY	QY308	JY308	KY308
9	PAWL ACTUATOR	JY061	JY061	JY061
10	BODY ASSEMBLY	QY301	JY301	KY301
11	ANTI-REVERSE PAWL	JY060	JY060	JY060
12	CENTERSHAFT ASSEMBLY	QY315	JY315	KY315
13	THUMB STOP	QY009-2	JY009-2	JY009-2
14	BKCOVER S/A WARRANTY 2010	QY323-4	JY324-4	KY323-4
15	SLIDE DRAG ACTUATOR	JY054	JY054	KY054
16	RETAINER CLIP	JY121	JY121	JY121
17	DRAG STAR	QY032-1	JY032-1	KY032-1
18	HANDLE ASSEMBLY	QY318-2		
18 A	HANDLE ASSEMBLY		VY318-2	KZ318-2
19	CRANK NUT	AZ003	AZ003	AZ003
20	RATCHET SPRING	RY033	RY033	
21	THUMB STOP SPRING	QY038	QY038	KY038
22	CRANK SHAFT BUSHING	QY026-3	WY026	KY026-5

\*2010 only — Keys 4 and 5 preceding Key 6 in diagram are replaced by Key 6A.

[WWW.REELDR.COM](http://WWW.REELDR.COM)

Prices subject to change without notice. Prices do not include postage and handling.

**PLEASE ORDER BY PART NUMBER**

Rev. 9/88

Zebco Division Brunswick Corporation, Box 270, Tulsa, OK 74101 USA 918-836-5581

