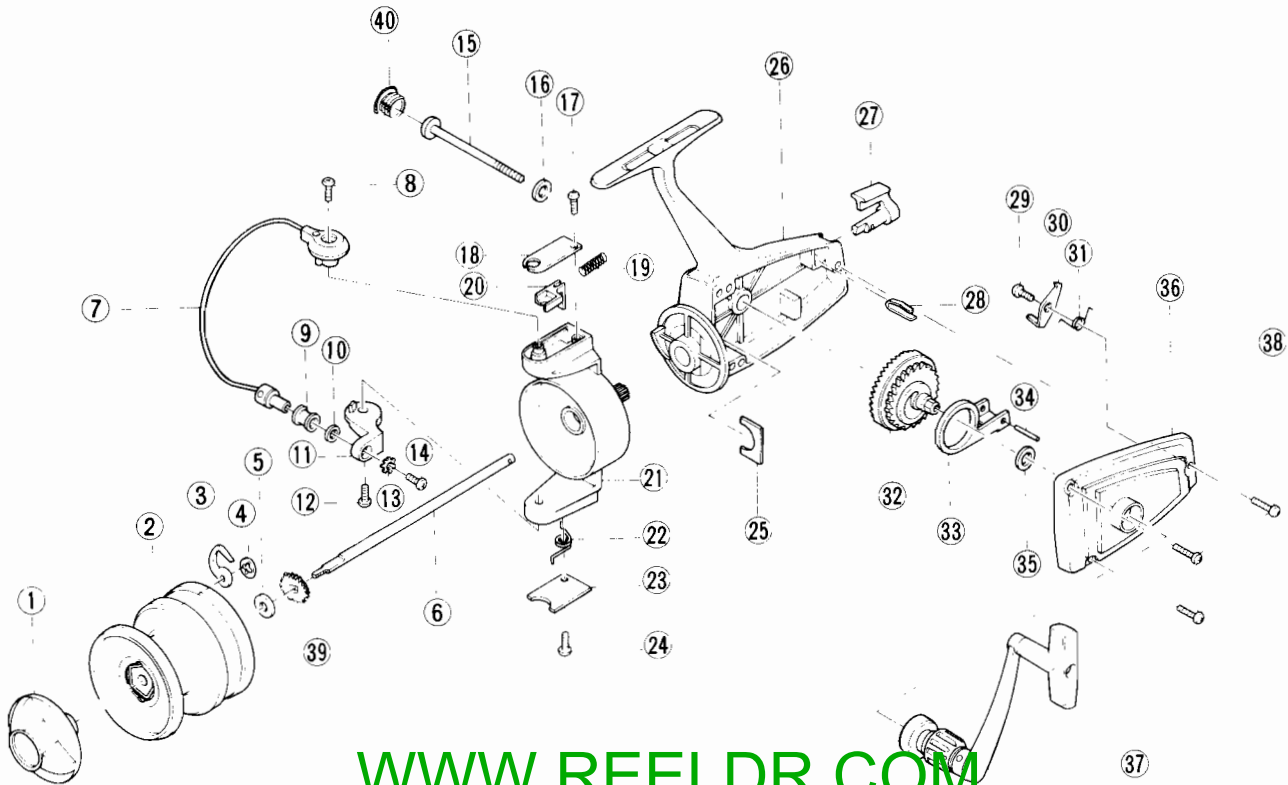


ZEBCO MS20™

weight	12.7 oz. / 360 g		
pound test	16	8*	10
yards	330	220	165
meters	302	201	151



WWW.REELDR.COM

MODEL MS20

Key No.	Part No.	Description	Key No.	Part No.	Description
1	GA32-M	Drag Knob (M)	21	GA9	Rotor
2	GA321-M	Spool Assy. (Keys3&4-M)	22	DB22	Bail Spring
3	CB67	Click Spring	23	DB87	Bail Spring Cover
4	CB68	Click Spring Retainer	24	DB85	Bail Cover Screw
5	EA45	Center Shaft Washer	25	DA6	Rotor Retainer
6	GA15	Center Shaft	26	GA301-M	Body (M)
7	DB347	Bail Assembly	27	FA59	Anti-Reverse Knob
8	CB51	Bail Screw	28	CB69	Anti-Rev. Knob Spring
9	CB4	Line Roller	29	FB80	Anti-Rev. Pawl Screw
10	CB16	Line Roller Bushing	30	FA63	Anti-Reverse Pawl
11	DB7	Bail Arm A	31	CB61	Anti-Rev. Pawl Spring
12	CB51	Bail Screw	32	DA12	Crank Gear
13	CB102	Bail Axle Washer	33	DA25	Oscillator Slider
14	CB108	Bail Axle Screw	34	GA62	Oscillator Slider Pin
15	CB54	Handle Retainer	35	GA27	Crank Gear Shim
16	CB105	Handle Retainer Washer	36	GA323-M	Side Plate Assy. (M)
17	DB85	Bail Cover Screw	37	GA318	Crank Handle Assembly
18	DB24	Bail Trip Cover	38	CB57	Side Plate Screw
19	DB49	Bail Trip Spring	39	DA56	Click Gear
20	DB19	Bail Trip Lever	40	FA73	Handle Retainer Cover

PLEASE ORDER BY PART NUMBER

Zebco Division Brunswick Corporation, Box 270, Tulsa, OK 74101 USA 918-836-5581