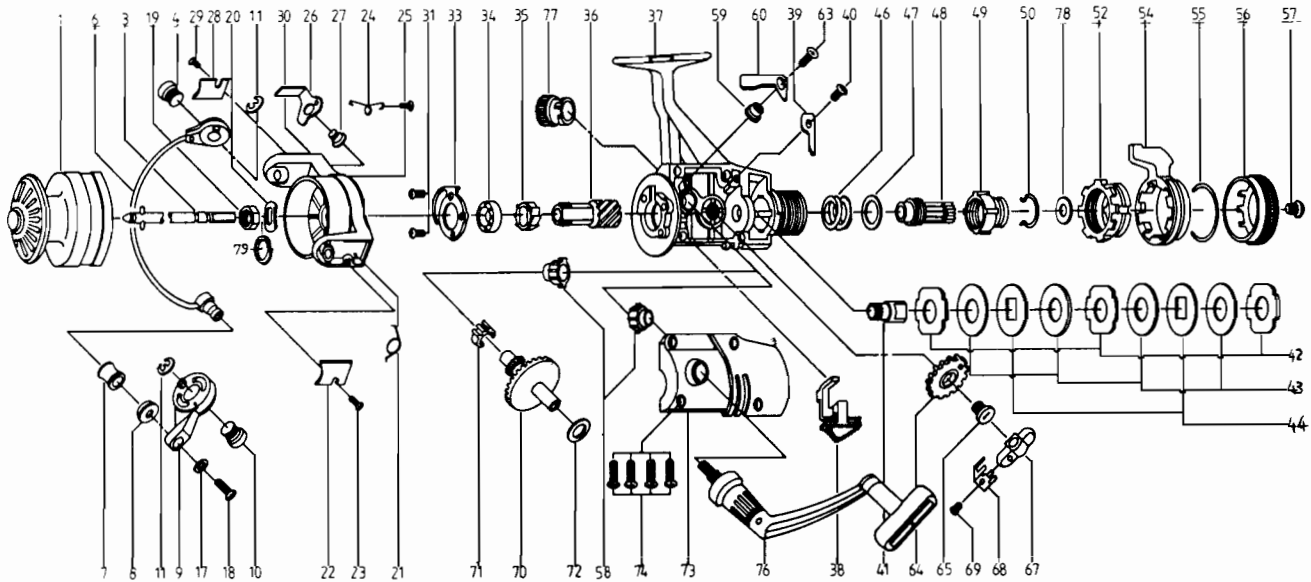


ZEBCO CS40



**KEY PART
NO. NO.**

NO. NO.	DESCRIPTION
1 YT321	SPOOL ASSEMBLY
3 YT315	MAIN SHAFT ASSEMBLY
4 YT044	BAIL HOLDER PIN
6 YT347	BAIL ARM ASSEMBLY
7 DT004	LINE ROLLER
8 YT016	BAIL COLLAR
9 PB007	BAIL ARM A
10 DT043	ARM LEVER PIN
11 DT002	E-CLIP
17 PB102	BAIL AXLE WASHER
18 PB108	BAIL AXLE SCREW
19 NB006	ROTOR NUT
20 DT065	ROTOR RETAINER
21 DT022	BAIL SPRING
22 YT087	BAIL SPRING COVER
23 YT085	BAIL SPRING CVR SCREW
24 DT049	KICK LEVER SPRING
25 DT058	KICK LEVER SPR. SCR.
26 DT019	KICK LEVER
27 DT037	KICK LEVER SCREW
28 YT024	KICK LEVER COVER
29 BT085	BAIL SPR. COVER SCREW
30 YT009	ROTOR ASSEMBLY
31 BT080	BEARING PLATE SCREW
33 DT040	BEARING PLATE
34 NB028	BALL BEARING
35 NB060	A/R RATCHET
36 DT011	PINION GEAR
37 YT301	BODY ASSEMBLY
38 DT059	ANTI-REVERSE LEVER
39 DT068	CLICK CLAW
40 BT067	CLICK CLAW SCREW
41 DT104	SLIDER HOLDER
42 DT030	REAR DRAG WSHR. "A"
43 DT039	REAR DRAG WSHR. "B"

**KEY PART
NO. NO.**

NO. NO.	DESCRIPTION
44 DT071	REAR DRAG WSHR. "D"
46 DT031	REAR DRAG COIL SPR.
47 DT046	REAR DRAG ADJ. WSHR.
48 DT112	REAR DRAG NUT
49 DT017	SLIDING SCREW
50 DT033	BACK CLICK CLAW
52 JT093	FIGHTING PULL SCREW
54 YT094	FIGHTING LEVER
55 JT095	FIGHTING LVR STOP SPG
56 YT032	REAR DRAG CAP
57 DT079	REAR DRAG CAP SCREW
58 BT013	BODY COVER BUSHING
59 DT014	A/R CLAW BUSHING
60 DT063	A/R CLAW (N)
63 DT089	A/R CLAW SCREW
64 NB053	OSCILLATING GEAR
65 NB078	OSC. GEAR SCR.
67 NB025	OSCILLATOR SLIDER
68 NB083	STOPPER
69 NB084	STOPPER SCREW
70 NB012	CRANK GEAR
71 NB086	SLIDER SPRING
72 RB026	CRANK GEAR SHIM
73 YT323	BODY COVER ASSEMBLY
74 YT057	BODY COVER SCREW
76 YT318	HANDLE ASSEMBLY
77 YT073	HANDLE SCREW CAP
78 DT046	REAR DRAG ADJ. WSHR.
79 DT120	ROTOR RET. SPRG. W/S
* 80 JT018	FIGHTING CLICK WASHER
* 81 JT005	BACK CLAW (FIGHTING)

*Not shown in diagram
Key 80 fits between keys 49, 50
Key 81 fits between keys 52, 54

WWW.REELDR.COM

Prices subject to change without notice. Prices do not include postage and handling.

PLEASE ORDER BY PART NUMBER

Rev. 9/88

Zebco Division Brunswick Corporation, Box 270, Tulsa, OK 74101 USA 918-836-5581

