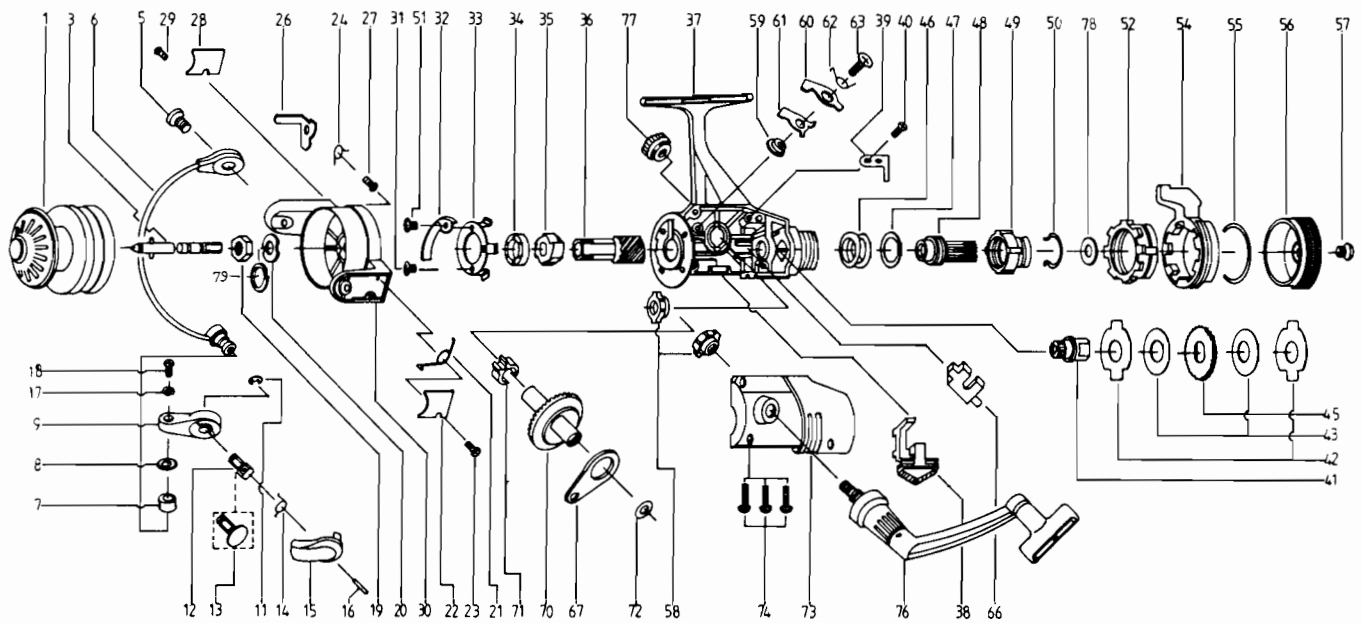


ZEBCO CS20



KEY PART

NO. NO.	DESCRIPTION
1 AT321	SPOOL ASSY
3 AT315	MAIN SHAFT ASSY
5 AT044	BAIL HOLDER PIN
6 AT347	BAIL ARM ASSY
7 NB004	LINE ROLLER
8 AT016	BAIL COLLAR
9 CT007	ARM LEVER
11 BT002	E-CLIP
12 CT113	TRIGGER HOLDER
13 CT111	ARM LEVER CAP
14 BT114	TRIGGER SPRING
15 BT115	TRIGGER
16 BT116	TRIGGER PIN
17 NB102	BAIL AXLE WASHER
18 NB108	BAIL AXLE SCR
19 VB006	ROTOR NUT
20 BT065	ROTOR RETAINER
21 CT022	BAIL SPRING
22 AT087	BAIL SP. COVER
23 AT085	BAIL SP. COVER SCREW
24 DT049	KICK LEVER SPRING
25 DT058	KICK LEVER SPR. SCR.
26 DT019	KICK LEVER
27 DT037	KICK LEVER SCREW
28 AT024	KICK LEVER COVER
29 AT085	BAIL SP. COVER SCREW
30 AT009	ROTOR ASSY
31 BT080	BEARING PLATE SCREW
32 CT082	KICK LEVER GUIDE
33 CT040	BEARING PLATE
34 RB028	BALL BEARING
35 BT060	RATCHET GEAR
36 CT011	PINION GEAR
37 AT301	BODY ASSY
38 CT059	ANTI-REVERSE LEVER

KEY PART

NO. NO.	DESCRIPTION
39 CT068	CLICK CLAW
40 B1067	CLICK CLAW SCREW
41 CT104	SLIDER HOLDER
42 CT030	REAR DRAG WSHR "A"
43 CT039	REAR DRAG WASHER "B"
44 CT071	REAR DRAG WASHER "D"
46 CT031	REAR DRAG COIL SPR.
47 CT046	REAR DRAG ADJ. WSHR.
48 CT112	REAR DRAG NUT
49 CT017	SLIDING SCREEN
50 CT033	BACK CLICK CLAW
51 BT182	KICK LEVER GUIDE SCR
52 HT093	FIGHTING PULL SCR.
54 AT094	FIGHTING LEVER
55 HT095	FT. LVR. STOP. RING
56 AT032	REAR DRAG CAP
57 VB079	DRAG SCREW PS00CC
58 BT013	BODY COVER BUSHING
59 BT014	A/R CLAW BUSHING
60 CT063	A/R CLAW (N)
61 CT064	A/R CLAW (S)
62 CT061	A/R CLAW SPRING
63 BT089	A/R CLAW SCREW
66 BT081	PIN SLIDER
67 BT025	OSCILLATING SLIDER
70 CT012	DRIVE GEAR
71 BT086	SLIDING SPRING
72 RB026	CRANK GEAR SHIM
73 AT323	BODY COVER ASSY
74 AT057	BODY COVER SCREW
76 AT318	HANDLE ASSY
77 AT073	HANDLE SCREW CAP
78 CT046	REAR DRAG ADJ. WSHR.
79 CT120	ROTOR RET. SPRBG. W/S

WWW.REELDR.COM

Prices subject to change without notice. Prices do not include postage and handling.

PLEASE ORDER BY PART NUMBER

Rev. 9/88

Zebco Division Brunswick Corporation, Box 270, Tulsa, OK 74101 USA 918-836-5581

