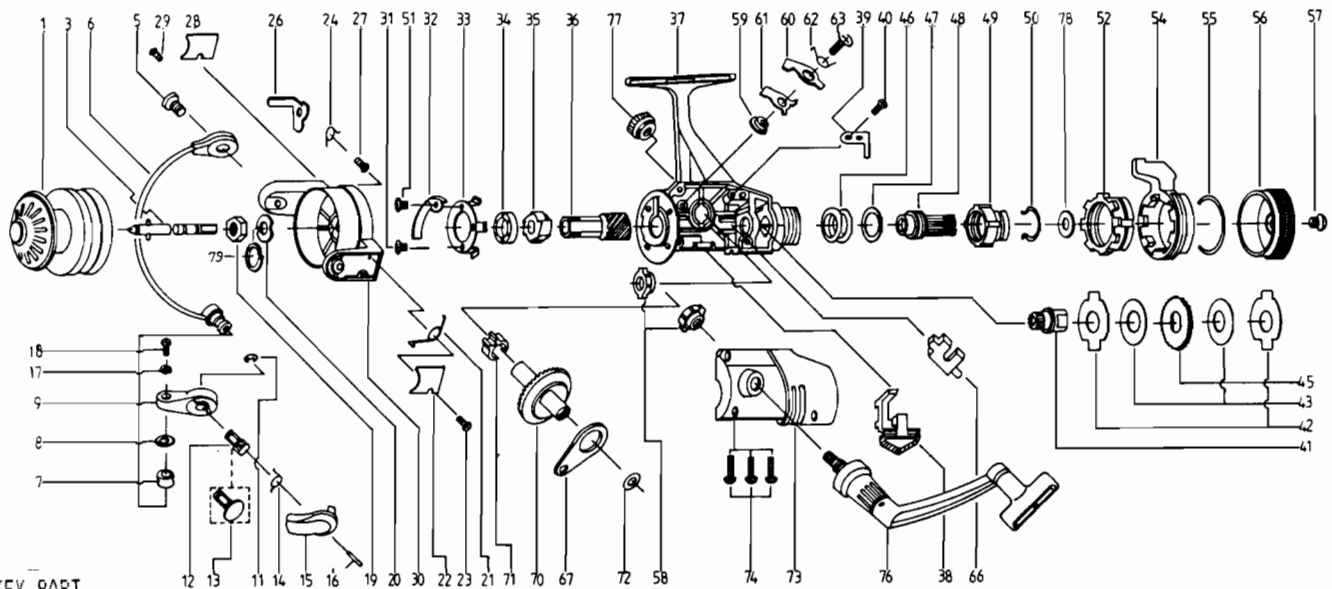


# ZEBCO CS05



**KEY PART  
NO. NO.**

NO. NO.	DESCRIPTION
1	WT321 SPOOL ASSEMBLY
3	WT315 MAIN SHAFT ASSEMBLY
5	BT048 BAIL HOLDER SCREW
6	WT347 BAIL ARM ASSEMBLY
7	VB004 LINE ROLLER
8	WT016 BAIL COLLAR
9	BT007 ARM LEVER
11	BT002 E-CLIP
12	BT113 TRIGGER HOLDER
13	BT111 ARM LEVER CAP
14	BT114 TRIGGER SPRING
15	BT115 TRIGGER
16	BT116 TRIGGER PIN
17	VB102 BAIL AXLE WASHER
18	VB108 BAIL AXLE SCREW
19	VB006 ROTOR NUT
20	BT065 ROTOR RETAINER
21	BT022 BAIL SPRINGS
22	WT087 BAIL SPRING COVER
23	WT085 BAIL SPRING CVR SCREW
24	BT049 KICK LEVER SCREW
26	BT019 KICK LEVER
27	BT037 KICK LEVER SCREW
28	WT024 KICK LEVER COVER
29	BT085 BAIL SPR. COVER SCREW
30	WT009 ROTOR ASSEMBLY
31	BT080 BEARING PLATE SCREW
32	BT082 KICK LEVER GUIDE
33	BT040 BEARING PLATE
34	RB028 BALL BEARING
35	BT060 RATCHET GEAR
36	BT011 PINION GEAR
37	WT301 BODY ASSEMBLY
38	BT059 ANTI-REVERSE LEVER
39	BT068 CLICK CLAW
40	BT067 CLICK CLAW SCREW

**KEY PART  
NO. NO.**

NO. NO.	DESCRIPTION
41	BT104 SLIDER HOLDER
42	BT030 REAR DRAG WASHER "A"
43	BT039 REAR DRAG WASHER "B"
45	BT066 CLICK GEAR
46	BT031 REAR DRAG COIL SPR.
47	BT046 REAR DRAG ADJ. WSHR.
48	BT112 REAR DRAG NUT
49	BT017 SLIDING SCREW
50	BT033 BACK CLICK CLAW
51	BT182 KICK LEVER GUIDE SCR
52	GT093 FIGHTING PULL SCREW
54	WT094 FIGHTING LEVER
55	GT095 FIGHTING LEVER
56	WT032 REAR DRAG CAP
57	VB079 DRAG SCREW PS00CC
58	BT013 BODY COVER BUSHING
59	BT014 A/R CLAW BUSHING
60	BT063 A/R CLAW (N)
61	BT064 A/R CLAW (S)
62	BT061 A/R CLAW SPRING
63	BT089 A/R CLAW SCREW
66	BT081 PIN SLIDER
67	BT025 OSCILLATING SLIDER
70	BT012 DRIVE GEAR
71	BT086 SLIDING SPRING
72	RB026 CRANK GEAR SHIM
73	WT323 BODY COVER ASSEMBLY
74	WT057 BODY COVER SCREW
76	WT318 HANDLE ASSEMBLY
77	WT073 HANDLE SCREW CAP
78	BT046 REAR DRAG ADJ. WSHR.
79	BT120 ROTOR RET. SPRG. W/S
* 80	GT018 FIGHTING CLICK WASHER
* 81	GT005 BACK CLAW (FIGHTING)

\*Not shown in diagram

Key 80 fits between keys 49, 50

Key 81 fits between keys 52, 54

WWW.REELDR.COM

Prices subject to change without notice. Prices do not include postage and handling.

**PLEASE ORDER BY PART NUMBER**

Rev. 9/88

Zebco Division Brunswick Corporation, Box 270, Tulsa, OK 74101 USA 918-836-5581

