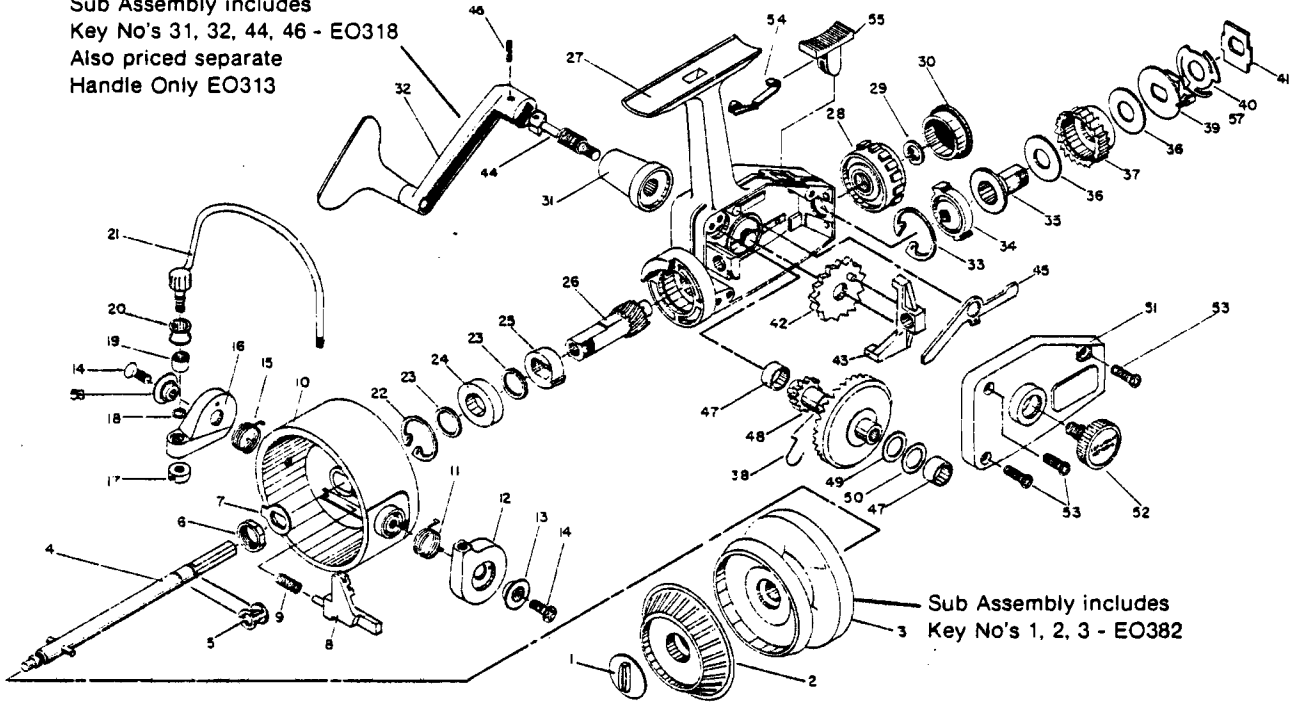


WWW.REELDR.COM

Zebco 840L™

Sub Assembly includes
Key No's 31, 32, 44, 46 - EO318
Also priced separate
Handle Only EO313



No.	Part No.	Description	Key No.	Part No.	Description
1	EO67	Spool Cap Retainer	32	EO313	Crank Handle
2	EO350	Spool Retainer Knob Assy.		EO318	Crank Handle Assembly (Key No. 31, 32, 44, 46)
4	EO315	Center Shaft Assembly	33	EO36	Front Drag Retainer Clip
5	EO78	Center Shaft 'C' Clip	34	EO66	Drag Drive
6	EO6	Rotor Nut	35	EO34	Drag Adjustment Screw
7	EO65	Rotor Washer	36	EO39	Drag Friction Washer 'B'
8	EO19	Bail Trip Lever	37	EO38	Drag Housing
9	EO22	Bail Actuator Spring	38	EO61	Anti-reverse Pawl Spring
10	EO309	Rotor	39	EO30	Drag Friction Washer 'A'
11	EO49	Bail Return Spring 'B'	40	EO31	Drag Tension Spring
12	EO17	Bail Arm 'B'	41	EO45	Drag Body Washer
13	EO48	Bail Retainer Washer	42	EO53	Oscillator Gear
14	EO51	Bail Retainer Screw 'A'	43	EO25	Oscillator Slider
15	EO44	Bail Return Spring 'A'	44	EO2	Crank Shaft Drive
16	EO7	Bail Arm 'A'	45	EO63	Anti-reverse Pawl
17	EO14	Bail Retainer Nut	46	EO62	Pin
18	EO102	Bail Axle Washer	47	EO27	Crank Shaft Bushing
19	EO16	Line Roller Bushing	48	EO308	Crank Shaft Assembly
20	EO4	Line Roller	49	EO26	Crank Gear Shim
21	EO310	Bail Axle Assembly	50	EO92	Crank Gear Shim 'A'
22	EO40	Bearing Retainer	51	EO323	Side Plate Assembly
23	EO76	Pinion Thrust Washer	52	EO54	Handle Retainer Screw
24	EO28	Pinion Bearing	53	EO57	Side Plate Screw
25	EO60	Anti-Reverse Ratchet	54	EO69	Anti-reverse knob retainer
26	EO11	Pinion Gear	55	EO59	Anti-reverse knob
27	EO301	Body Assembly	56	EO321	Spool - Sub Assembly (Key No.'s 1, 2, 3)
28	EO332	Drag Knob Assembly	57	EO68	Click Spring
29	EO70	Rear Drag Retainer Clip	58	EO115	Bail Retainer Washer 'B'
30	EO71	Drag Knob Cap			
31	EO58	Handle Collar			