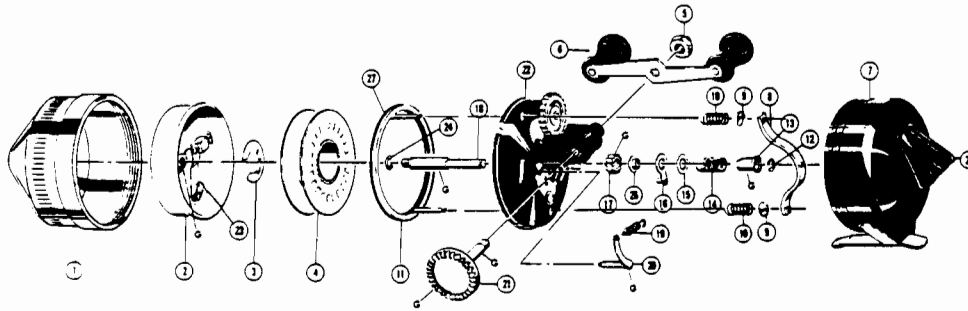


TEBCO 808™



| | |
|------------|--------------|
| weight | 13 oz./369 g |
| pound test | 17 20 25 |
| yards | 140 100 75 |
| meters | 128 91 69 |

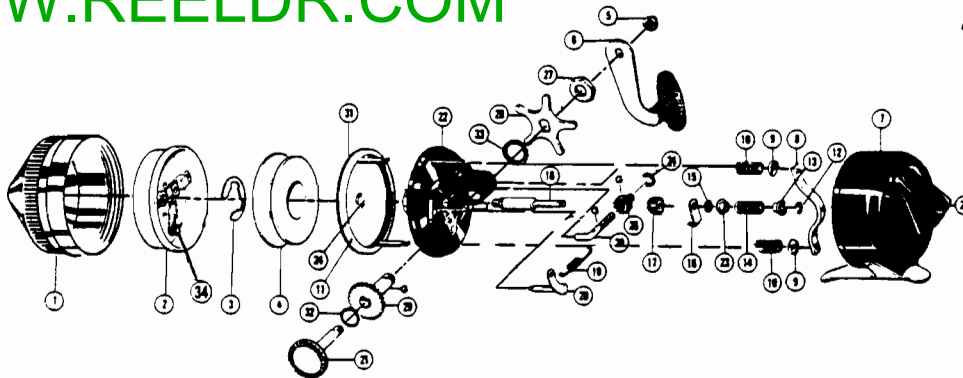
MODEL 808

| Key No. | Part No. | Description | Key No. | Part No. | Description |
|---------|-----------|------------------------|---------|----------|------------------------|
| 1 | PZ324 | Front Cover Assy. | 14 | PZ020 | *Center Shaft Spring |
| 2 | PZ310 | Spinner Head Assy. | 15 | PZ068 | *Center Shaft Washer |
| 3 | GZ034 | Spool Clip | 16 | PZ052 | *Anti-Reverse Drag |
| 4 | PZ021 | Spool (Empty) | 17 | PZ011 | *Pinion Gear |
| 5 | PZ321-20T | Spool w/20# Trilene | 18 | PZ015 | *Center Shaft |
| 6 | QZ003 | Crank Nut (or QZ003-B) | 19 | PZ085 | Clutch Spring |
| 7 | PZ318 | Crank Handle | 20 | PZ307 | Clutch Shaft Assy. |
| 8 | PZ323 | Back Cover w/Th. Brk. | 21 | PZ308 | Crank Shaft |
| 9 | PZ031 | Brake Bar | 22 | PZ301 | Body Assy. |
| 10 | PZ074 | Brake Ring Cap | 23 | PZ049 | Spinner Head Spring |
| 11 | PZ073 | Brake Ring Spring | 24 | PZ030 | Center Shaft Ret. Clip |
| 12 | PZ346 | Brake Ring Assy. | 25 | PZ009 | Thumb Stop |
| 13 | AZ122 | *Center Shaft Clip | 26 | PZ084 | *Shaft Spacer (Bottom) |
| | PZ078 | *Shaft Spacer (Top) | 27 | PZ053 | Brake Ring Gasket |

*Available as One Unit,
PZ315 Center Shaft Assy.

WWW.REELDR.COM

TEBCO 888™



| | |
|------------|----------------|
| weight | 13.8 oz./383 g |
| pound test | 17 20 25 |
| yards | 140 100 75 |
| meters | 128 91 69 |

MODEL 888

| Key No. | Part No. | Description | Key No. | Part No. | Description |
|---------|-----------|------------------------|---------|----------|------------------------|
| 1 | PZ324 | Front Cover Assy. | 18 | PZ015 | *Center Shaft |
| 2 | PZ310 | Spinner Head Assy. | 19 | MZ085 | Clutch Spring |
| 3 | GZ034 | Spool Clip | 20 | PZ307 | Clutch Shaft Assy. |
| 4 | PZ021 | Spool (Empty) | 21 | PY308 | Crank Shaft |
| 5 | PZ321-20T | Spool w/ 20# Trilene | 22 | PY301 | Body Assembly |
| 6 | QZ003 | Crank Nut (or QZ003-B) | 23 | PZ084 | *Shaft Spacer (Bottom) |
| 7 | PY318 | Crank Handle | 24 | PZ030 | Center Shaft Ret. Clip |
| 8 | PY323 | Back Cover w/Th. Brk. | 25 | PZ009 | Thumb Stop |
| 9 | PZ031 | Brake Bar | 26 | MZ086 | Clutch Pinion |
| 10 | PZ074 | Brake Ring Cap | 27 | PZ087 | Crank Bearing Nut |
| 11 | PZ073 | Brake Ring Spring | 28 | PY059 | Star Drag |
| 12 | PZ346 | Brake Ring Assy. | 29 | PY326 | Crank Shaft Bearing |
| 13 | AZ122 | *Center Shaft Clip | 30 | MZ032 | Clutch Screw |
| 14 | PZ078 | *Shaft Spacer (Top) | 31 | PZ053 | Brake Ring (Gasket) |
| 15 | PZ020 | *Center Shaft Spring | 32 | PZ088 | Crank Shaft Washer |
| 16 | PZ068 | *Center Shaft Washer | 33 | MZ088 | O-Ring |
| 17 | PZ052 | *Anti-Reverse Drag | 34 | PZ049 | Spinner Head Spring |
| | PZ011 | *Pinion Gear | | | |

*Available as One Unit,
PZ315 Center Shaft Assy.