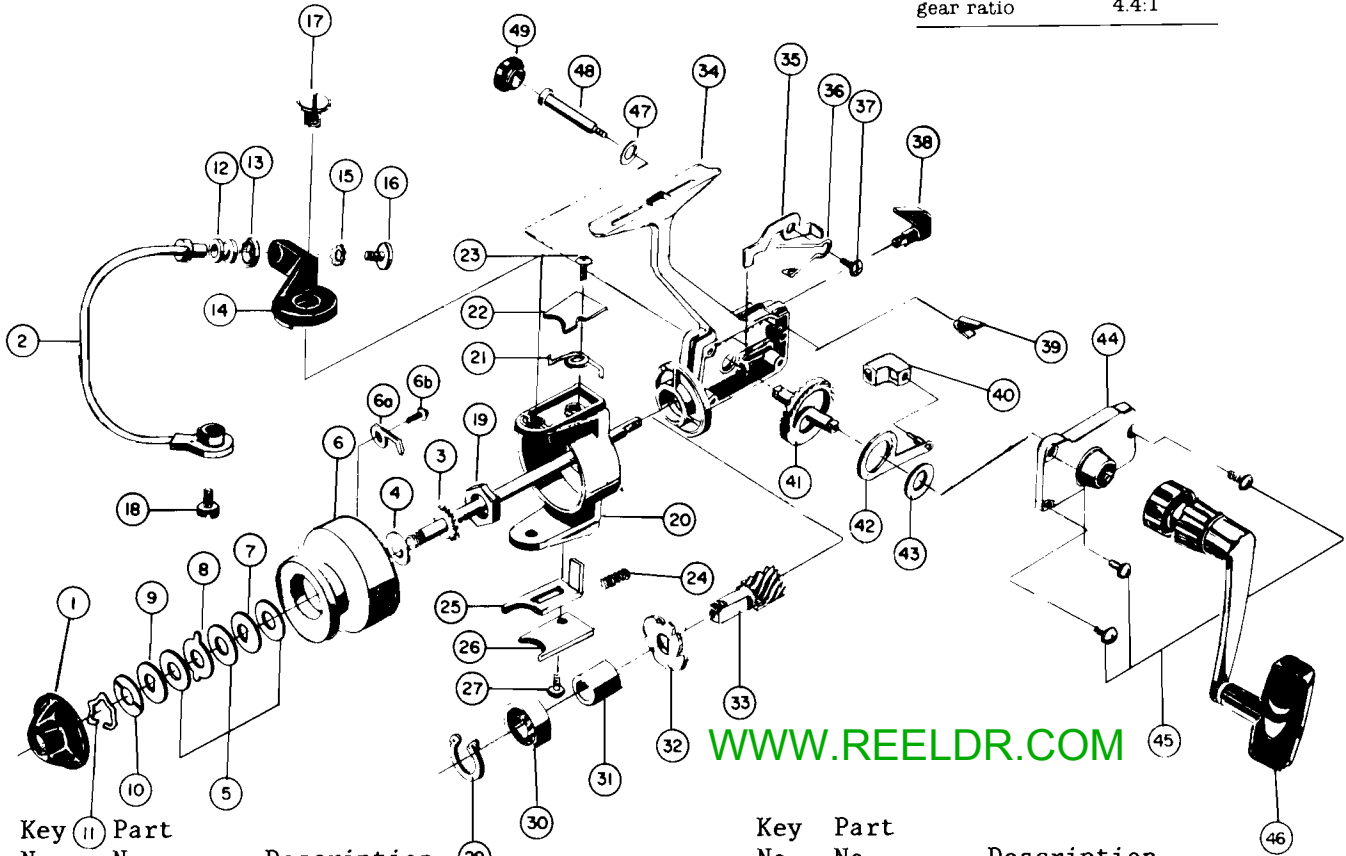


ZEBCO 6000

weight	7.6 oz./216 g		
pound test	2	4*	6
yards	210	130	90
meters	192	119	82
gear ratio	4.4:1		



WWW.REELDR.COM

Key No.	Part No.	Description	Key No.	Part No.	Description
1	HB37	Drag Knob	25	HB19	Bail Trip Lever
2	HB347	Bail Assembly	26	HB24	Bail Trip Cover
3	HB315	Center Shaft	27	HB50	Bail Cover Screw
4	HB16	Center Shaft Washer	29	CB40	Bearing Retainer
5	CB39	*Drag Washer B	30	HB28	Pinion Bearing
6	HB21	*Spool (Incomplete) (See Assy)	31	HB29	Pinion Spacer
6A	HB55	*Click Spring	32	HB40	Anti-Rev. Ratchet
6B	CB68	*Click Spring Retainer	33	HB11	Pinion Gear
7	CB30	*Drag Washer A	34	HB301	Body Assembly
8	HB32	*Drag Drive	35	HB41	Anti-Reverse Pawl
9	CB26	*Drag Washer C	36	HB42	Anti-Rev. Pawl Spring
10	CB109	*Spring Washer	37	HB49	Anti-Reverse Screw
11	CB36	*Drag Retainer Clip	38	HB38	Anti-Reverse Knob
12	CB4	Line Roller	39	CB69	Anti-Rev. Knob Spring
13	CB16	Line Roller Bushing	40	HB44	Oscillator Slider Link
14	HB3	Bail Arm A	41	HB12	Crank Gear
15	CB102	Bail Axle Washer	42	HB43	Oscillator Slider
16	HB7	Bail Axle Screw	43	CB27	Crank Gear Shim
17	HB8	Bail Screw A	44	HB323	Side Plate Assy.
18	HB10	Bail Screw B	45	HB48	Side Plate Screw
19	CB6	Rotor Nut	46	HB318	Crank Handle Assy.
20	HB9	Rotor	47	CB105	Handle Retainer Washer
21	HB22	Bail Spring	48	HB52	Handle Retainer
22	HB25	Bail Spring Cover	49	CB73	Handle Screw Cover
23	HB50	Bail Cover Screw	*Available As One Unit,		
24	HB20	Bail Trip Spring	HB321 Spool Assy.		

PLEASE ORDER BY PART NUMBER