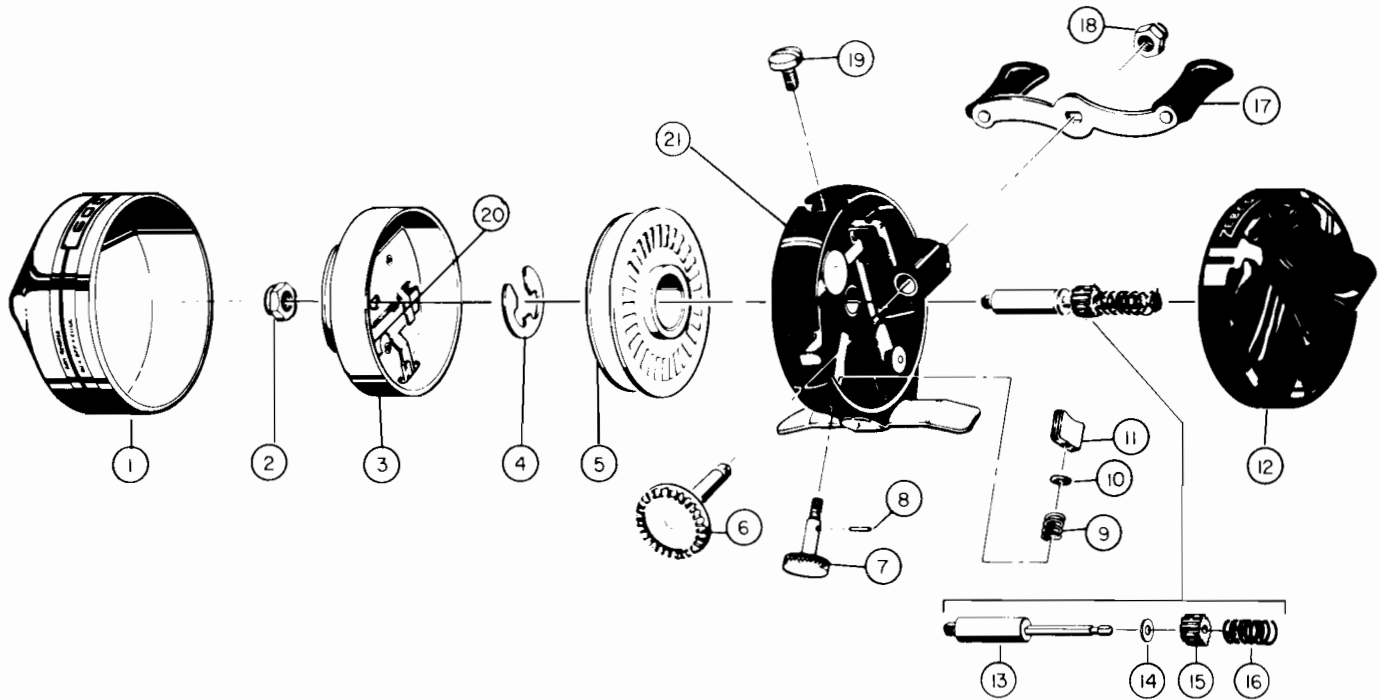


# ZEBCO 600™

weight	7.5 oz./213 g			
pound test	6	8	10	12
yards	155	110	75	70
meters	142	101	69	64



[WWW.REELDR.COM](http://WWW.REELDR.COM)

**MODEL 600**

Key No.	Part No.	Description
1	UZ324	Front Cover Assy.
2	UZ006	Spinner Head Nut
3	UZ310	Spinner Head Assy.
4	XZ034	Spool Clip
5	UZ021	Spool (Empty)
	UZ321-10M	Spool w/10# Zebco Line
6	OZ308	Crank Shaft
7	UZ032	Adj. Screw
8	OZ029	Retainer Pin
9	UZ039	Adj. Screw Spring
10	UZ030	Adj. Screw Washer
11	UZ052	Brake Shoe

Key No.	Part No.	Description
12	UZ323	Back Cover Assy.
13	UZ015	*Center Shaft
14	UZ077	*Washer
15	JZ011	*Pinion Gear
16	XZ020	*Center Shaft Spring
17	LZ318	Crank Handle Assy.
18	XZ003-1	Crank Nut
19	UZ055	Cover Lock Screw
20	PZ049	Spinner Head Spring
21	UZ301	Body Assy.

\*Available As One Unit,  
UZ315 Center Shaft Assy.

**PLEASE ORDER BY PART NUMBER**

Zebco Division Brunswick Corporation, Box 270, Tulsa OK 74101 USA 918 836 5581

