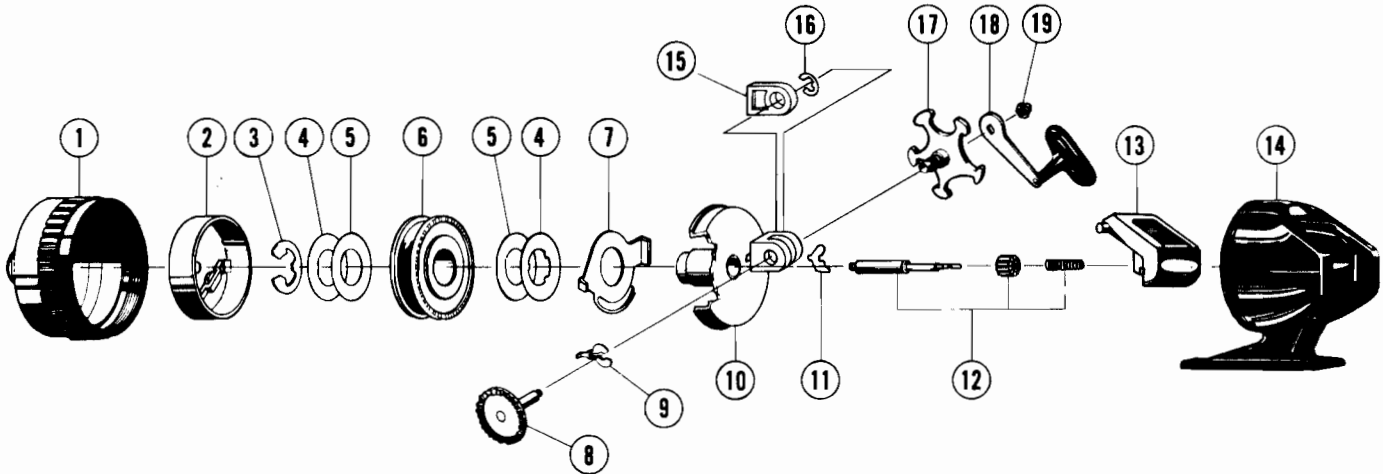


# ZEBCO 20/20™

weight	8.7 oz./247 g		
pound test	6	8	10
yards	150	100	85
meters	137	91	77



[WWW.REELDR.COM](http://WWW.REELDR.COM)

NOTE: Should the anti-reverse pawl (11) drop out while changing spool, be sure to put into body subassembly with largest flange pointing toward base of reel as shown in schematic. Make sure the arm of the pawl actuator (9) rests in the center of the anti-reverse pawl to reassemble.

## MODEL 20/20

Key No.	Part No.	Description	Key No.	Part No.	Description
1	JY324	Front Cover Assy.	10	JY301	Body Assembly
2	JY310	Spinner Head Assy.	11	JY060	Anti-Reverse Pawl
3	JY034	Spool Clip	12	JY315	Center Shaft Assy.
4	JY040	Spool Washer	13	JY009	*Thumb Brake
5	JY108	Drag Washer	14	JY323	Back Cover w/Th. Brk.
6	JY021	Spool (Empty)	15	JY054	Slide Drag Actuator
	JY321-8T	Spool w/8# Trilene	16	JY121	Retainer Clip
7	JY027	Clutch Ring	17	JY026	Crank Bush. (Star Dr.)
8	JY308	Crank Shaft Assy.	18	JY318	Crank Handle Assy.
9	JY061	Pawl Actuator	19	AZ003	Crank Nut (or XZ003-1)

\*Available Separate Or With  
Back Cover Assembly

PLEASE ORDER BY PART NUMBER

Zebco Division Brunswick Corporation, Box 270, Tulsa OK 74101 USA 918-836-5581