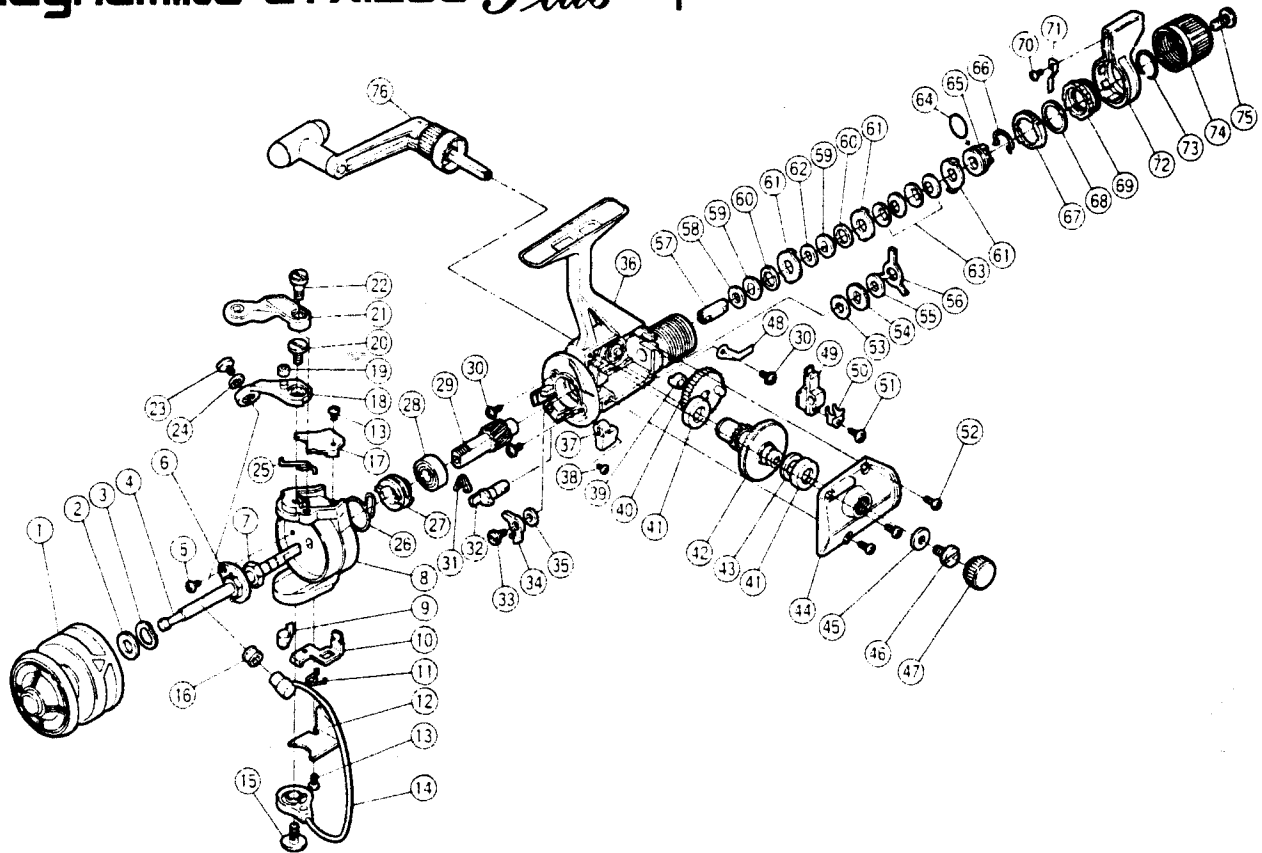


# Magnumlite GT-X1200 *Plus* Exploded View



14

## Magnumlite GT-X1200 *Plus* Parts List

No.	Code No.	Part Names	No.	Code No.	Part Names
1	6.0209 31212S	Spool Assembly	39	7.0537 29200S	Oscillating Gear Bushing
2	7.0217 26100S	Spool Washer	40	6.0449 27220S	Oscillating Gear Assembly
3	7.2101 06100S	Tension Spring	41	7.0617 26100S	Drive Gear Bushing
4	6.0219 31212S	Main Shaft Assembly	42	7.0408 29220S	Drive Gear
5	7.0014 30100S	Nut Lock Screw	43	7.0446 01100S	Drive Gear Washer
6	7.0360 26200S	Rotor Nut Lock Plate	44	7.0601 32200S	Side Cover
7	7.0311 01100S	Rotor Nut	45	7.0725 05500S	Handle Lock Washer
8	7.0301 29221S	Rotor	46	7.0710 05100S	Handle Lock Screw
9	7.0355 21200S	Bail Trip Slide Cam	47	7.0453 26120S	Handle Screw Cap
10	7.0336 21700S	Bail Trip Lever	48	7.0122 32200S	Drag Click
11	7.0337 21200S	Lever Spring	49	7.0410 29200S	Oscillating Slider
12	7.0338 29220S	Bail Trip Cover	50	7.0538 29200S	Oscillating Slider Retainer
13	7.0013 30111S	Bail Trip Cover Screw	51	7.0014 30120S	Slider Retainer Screw
14	7.0302 29220S	Bail	52	7.0011 30710S	Side Cover Screw
15	7.0335 29220S	Bail Trip Cam Screw	53	7.0139 26210S	Drag Washer "C <sub>2</sub> "
16	7.0304 01100S	Line Roller	54	7.0113 26200S	Click Gear
17	7.0307 29220S	Bail Spring Cover	55	7.0139 26200S	Drag Washer "C <sub>1</sub> "
18	7.0303 21700S	Bail Arm	56	7.0159 32200S	Eared Washer "BF"
19	7.0356 21700S	Trigger Pin Roller	57	7.0112 32200S	Drag Shaft
20	7.0306 21700S	Bail Arm Screw	58	7.0140 32200S	Drag Washer "D"
21	7.0357 21700S	Quick-Fire Trigger	59	7.0115 29200S	Key Washer "A"
22	7.0358 29220S	Trigger Screw	60	7.0146 32210S	Drag Washer "F <sub>2</sub> "
23	7.0013 40420S	Line Roller Screw	61	7.0116 32200S	Eared Washer "B"
24	7.0316 01110S	Lock Washer	62	7.0146 32200S	Drag Washer "F <sub>1</sub> "
25	7.0310 21801S	Bail Spring	63	7.0150 32200S	Coned Disc Springs
26	7.0422 21700S	Anti-Reverse Pawl Spring	64	7.0160 32200S	"O" Ring
27	7.0421 21700S	Anti-Reverse Ratchet	65	7.0110 32200S	Pressure Screw
28	7.0402 19300S	Ball Bearing	66	7.0149 32200S	Hold Click Spring
29	7.0407 29220S	Pinion Gear	67	7.0155 32200S	Lever Click Gear
30	7.0011 30470S	Bearing Retainer Screw	68	7.0157 32200S	Fightin' Pressure Screw Washer
31	7.0426 21200S	Anti-Reverse Cam Spring	69	7.0156 32200S	Fightin' Pressure Screw
32	7.0424 32200S	Anti-Reverse Cam	70	7.0010 00110S	Fightin' Drag Click Screw
33	7.0425 32200S	Anti-Reverse Pawl Screw	71	7.0154 32100S	Fightin' Drag Click
34	6.0419 21700S	Anti-Reverse Pawl Assembly	72	7.0153 32200S	Fightin' Drag Lever
35	7.0457 19100S	Anti-Reverse Pawl Spacer	73	7.0158 32200S	Lever Hold Spring
36	7.0401 32200S	Body	74	7.0111 32200S	Drag Programmer
37	7.0404 32200S	Anti-Reverse Lever	75	7.0013 50410S	Drag Programmer Screw
38	7.0013 00110S	Anti-Reverse Lever Screw	76	6.0709 27215S	Handle Assembly