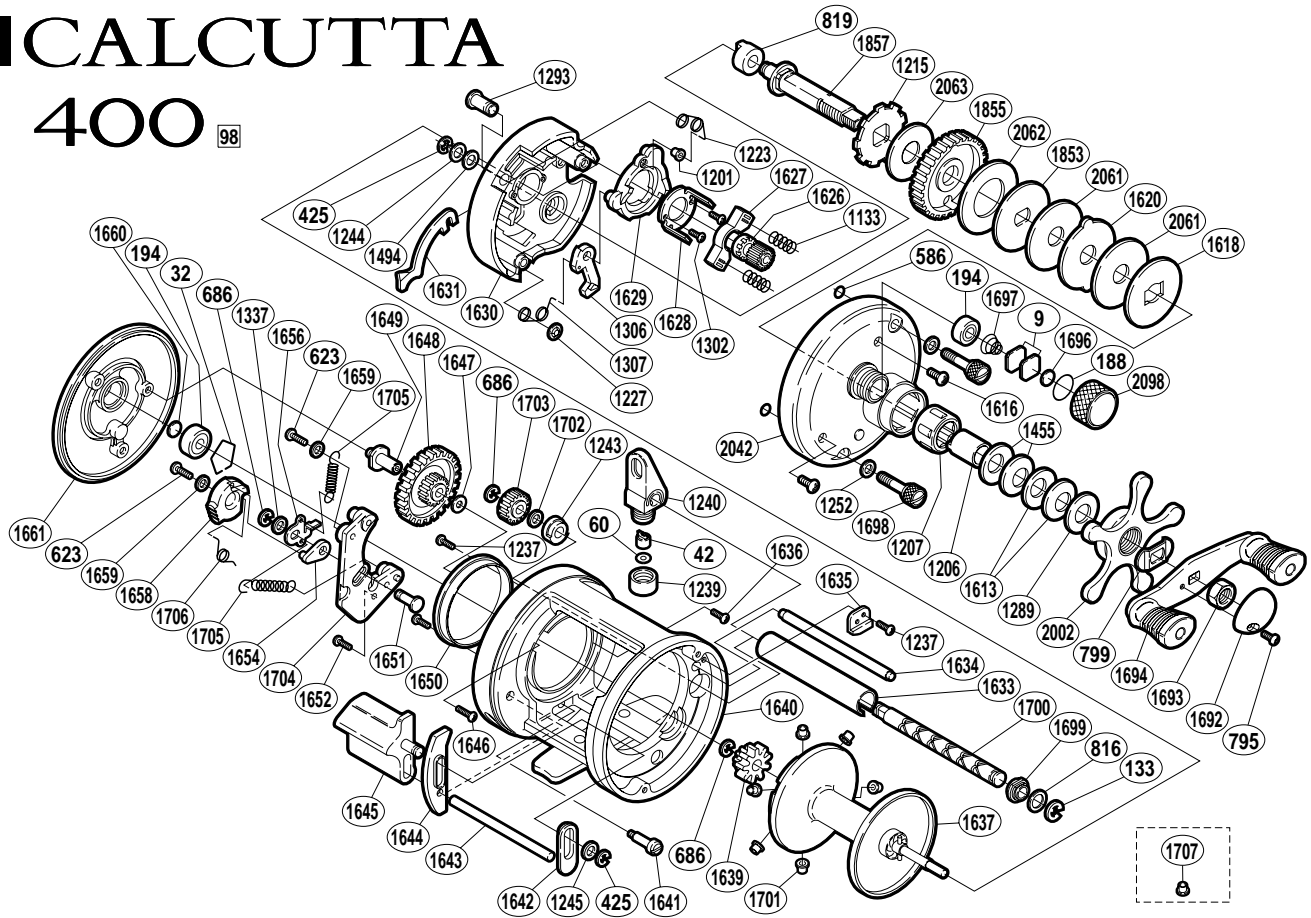


■ CALCUTTA 400 98



BNT No.	PARTS NAMES	BNT No.	PARTS NAMES	BNT No.	PARTS NAMES
0009	Cast Control Spacer (A)	1307	Clutch Pawl Spring	1654	Click Link
0032	Bearing Retainer	1337	Spacer	1656	Click Pawl
0042	Line Guide Pawl	1455	Drag Spring Washer (H)	1658	Click Switch
0060	Spacer (optional)	1494	Drive Shaft Washer (B)	1659	Lock Washer
0133	"E" Lock	1613	Drag Spring Washer (L)	1660	Spacer (B)
0188	"O" Ring	1616	Right Side Plate Screw	1661	Left Side Plate
0194	Ball Bearing	1618	Key Washer (C)	1692	Handle Nut Plate
0425	"E" Lock	1620	Eared Washer	1693	Handle Nut
0586	Bolt Retainer	1626	Pinion Gear	1694	Handle Assembly
0623	Multi-Purpose Screw	1627	Yoke	1696	Cast Control Spacer (B)
0686	"E" Lock	1628	Clutch Cam Retainer	1697	Spool Tension Spring
0795	Handle Nut Plate Screw	1629	Clutch Cam	1698	Right Side Plate Bolt
0799	Friction Washer	1630	Set Plate	1699	Worm Bushing (A)
0816	Washer (A)	1631	Clutch Plate	1700	Worm Shaft
0819	Drive Shaft Bushing	1633	Level Wind Guard	1701	Brake Collar (gray)
1133	Yoke Spring	1634	Level Wind Guide	1702	Washer (B)
1201	Retractor Spring Collar	1635	Worm Bushing (A) Retainer	1703	Idle Gear (C)
1206	Roller Clutch Inner Tube	1636	Left Side Plate Screw (short)	1704	Click Plate
1207	Roller Clutch Bearing	1637	Spool Assembly	1705	Click Spring
1215	Anti-Reverse Ratchet	1639	Idle Gear (A) / Click Gear	1706	Click Switch Spring
1223	Retractor Spring	1640	Forged One-Piece Frame Assembly	1853	Key Washer (A)
1227	Clutch Pawl Spring Retainer	1641	Left Side Plate Bolt	1855	Drive Gear
1237	Multi-Purpose Screw	1642	Clutch Bar Guide (A)	1857	Drive Shaft
1239	Pawl Cap	1643	Clutch Bar Support	2002	Star Drag
1240	Line Guide	1644	Clutch Bar Guide (B)	2042	Right Side Plate
1243	Worm Bushing (B)	1645	Quick-Fire II Clutch Bar	2061	Drag Washer (C-G)
1244	Drive Shaft Spacer	1646	Left Side Plate Screw (long)	2062	Drag Washer (B-G)
1245	Clutch Bar Support Spacer	1647	Idle Gear Washer	2063	Drag Washer (A-G)
1252	Right Side Plate Bolt Washer	1648	Idle Gear (B)	2098	Cast Control Cap
1289	Star Drag Spacer	1649	Idle Gear Shaft		
1293	Retractor Spring Pin	1650	Brake Ring		
1302	Clutch Cam Screw	1651	Click Shaft		
1306	Clutch Pawl	1652	Click Plate Screw	1707	Brake Collar (clear)