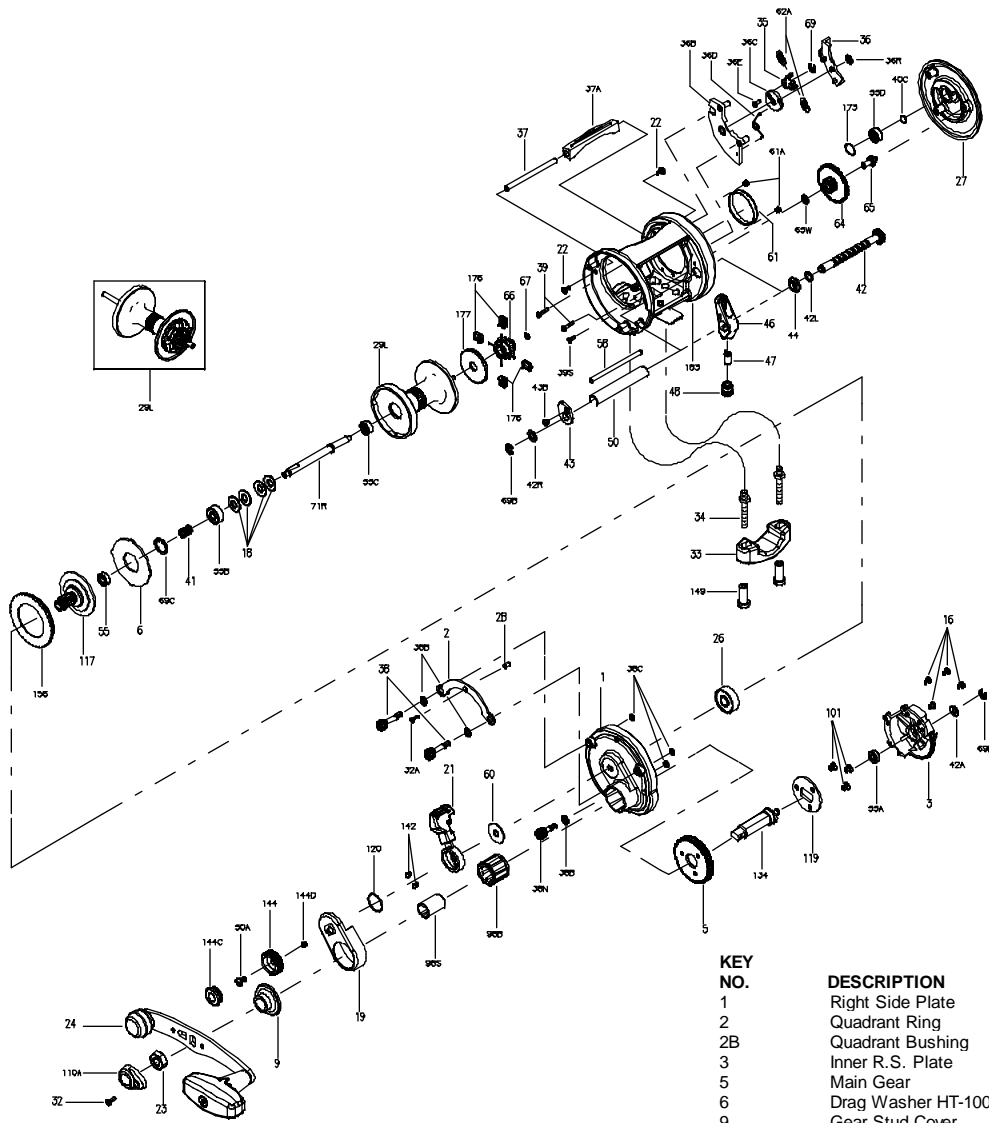




# INTERNATIONAL® 975LD SPECIFICATIONS AND PARTS LIST



LINE CAPACITY	GEAR RATIO	WEIGHT
340 YDS / 15 LBS	4.5:1	15 OZ
310 METERS / 0.40 MM		425 GRAMS

KEY NO.	DESCRIPTION
1	Right Side Plate
2	Quadrant Ring
2B	Quadrant Bushing
3	Inner R.S. Plate
5	Main Gear
6	Drag Washer HT-100 (2 req.)
9	Gear Stud Cover
16	Bridge Screws (4 req.)
18	Disc Clutch Spring (4 req.)
19	Cam Assembly
21	Eccentric Lever
22	Post Screw (2 req.)
23	Handle Nut
24	Handle Assembly
26	R.S. Plate Bearing
27	Left Side Plate
29L	Spool Assembly
32	Handle Cap Screw
32A	Quadrant Screw

PART NO.	DESCRIPTION
001 975LD	Right Side Plate
002 975LD	Quadrant Ring
002B975LD	Quadrant Bushing
003 975	Inner R.S. Plate
005 975LD	Main Gear
006 975LD	Drag Washer HT-100 (2 req.)
009 975LD	Gear Stud Cover
016 975LD	Bridge Screws (4 req.)
018 975LD	Disc Clutch Spring (4 req.)
019 975LD	Cam Assembly
021 975LD	Eccentric Lever
050 716	Post Screw (2 req.)
023 555	Handle Nut
024 975	Handle Assembly
026N025	R.S. Plate Bearing
027 975	Left Side Plate
029L975LD	Spool Assembly
032 015	Handle Cap Screw
032 975LD	Quadrant Screw

KEY NO.	DESCRIPTION	PART NO.
33	Rod Clamp	033 113
34	Rod Clamp Screw (2 req.)	034 975
35	Click Tongue	035 965
36	Click Button	036 975
36B	Click Housing	036B975
36C	Click Wheel	036C965
36D	Click Wheel Spring	036D965
36E	Click Tongue Pin	036E965
36R	Retaining Ring	036R965
37	Thumb Bar Post	037 975
37A	Thumb Bar	037A975
38	Take-Apart Screw (2 req.)	038 975LD
38B	Side Plate Washer (3 req.)	038BN965
38C	Screw 'O' Ring (3 req.)	038CN965
38N	Take-Apart Screw	038N965
39	L.S. Plate Screw (2 req.)	039 965
39S	L.S. Plate Short Screw	039S965
40C	Metal Thrust Washer	040C310
41	Bearing Spring	041 975LD
42	Worm Shaft	042 975
42A	Metal Washer	042R965
42L	L.S. Worm Shaft Washer	042L965
42R	R.S. Worm Shaft Washer	042R965
43	R.S. Worm Shaft Bushing	043 965
43B	Worm Bushing Screw	043B965
44	L.S. Worm Shaft Bushing	044 975
46	Line Guide	046 975
47	Pawl	047 975
48	Pawl Cover Screw	048 965
50	Worm Shield	050 975
50A	Pre-Set Knob Screw	050 716
55	Ball Bearing	055 965
55A	Gear Stud Bushing	055A965
55B	Spool Bearing	055 116
55C	Spool Bearing	055 113H
55D	Left Side Bearing	055 113H
58	Line Guide Post	058 975
60	Eccentric Washer	060 975LD
61	Brake Drum	061 965
61A	Brake Drum Screw (2 req.)	043B965
62A	Click Spring (2 req.)	062A965
64	Idler Gear	064 975
65	Idler Gear Pin	065 965
65W	Idler Gear Washer	065W965
66	Spool Gear Click Ratchet	066M965
67	Lock Ring	067 016S
69	Retaining Ring	069B050
69C	Spool Retaining Ring	069 975LD
69B	Retaining Ring (2 req.)	069B600
71R	Spool Spindle	071R975LD
98B	Roller Bearing	098B525
98S	Bearing Clutch Shaft	098S525
101	Retaining Plate Screw (3 req.)	101 050S
110A	Handle Nut Cap	110A555
117	Drive Plate Assembly	117 975LD
119	Retaining Plate	119 030S
120	Eccentric O-Ring	026R965
134	Gear Stud	134 975
142	Cam Follower (2 req.)	142 975LD
144	Preset Knob	144 975LD
144C	Preset Knob Cap	144C975LD
144D	Preset Knob Click	144D975LD
149	Rod Clamp Nut (2 req.)	149 045
156	Drag Cover	156 975LD
173	L.S. Bearing Retainer	173 965
176	Anti-Backlash Brakes (4 req.)	176 975LD
177	Brake Selection Knob	177 965
183	Frame Assembly	183 975LD