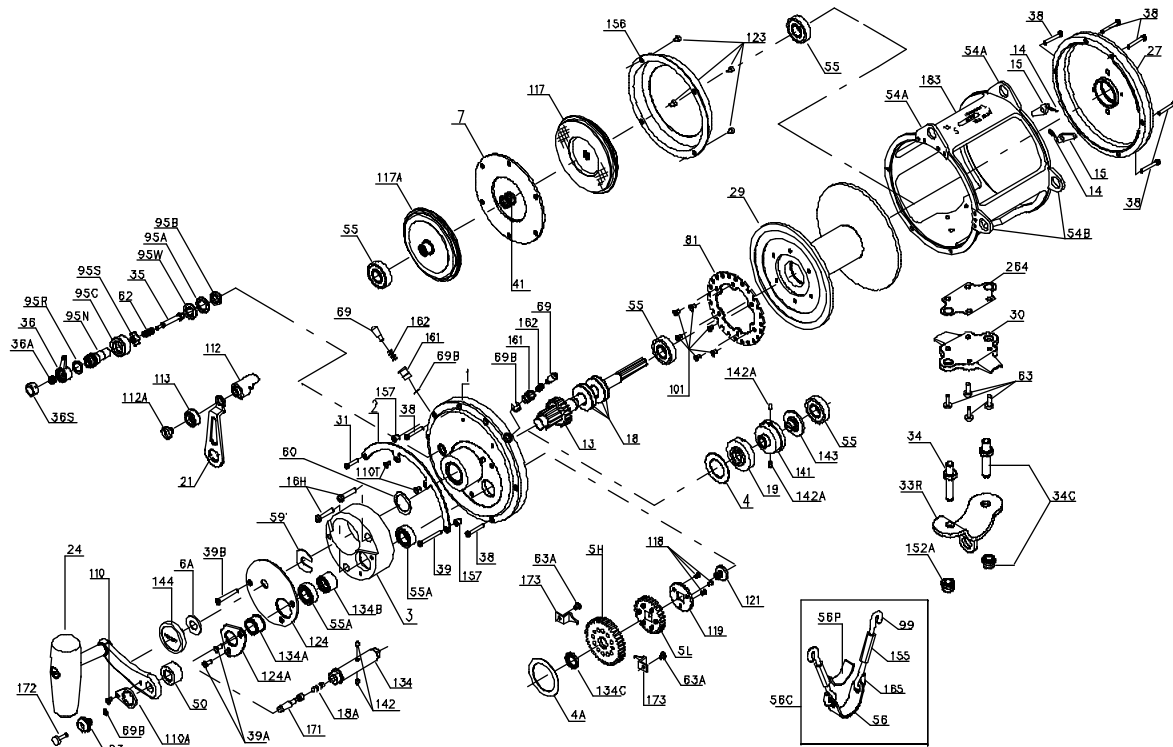




PARTS LIST FOR MODELS 80ST AND 80STW



KEY NO.	80ST PART NO.	80STW PART NO.	DESCRIPTION
34C	034C080T	034C080T	Rod Clamp Screw w/Nut
35	035 080ST	035 080ST	Click Tongue
36	036 080ST	036 080ST	Click Button
36A	036 700	036 700	Click Button Nut
36S	036S080ST	036S080ST	Click Button Cap
38	038T050	038T050	Frame Screw
39	039 050	039 050	Long Quadrant Screw
39A	039A080S	039A080S	Cover Screws (2 req.)
39B	039 080ST	039 080ST	Cover Screw
41	041 050	041 050	L. S. Bearing Spring
50	050 080ST	050 080ST	Shield
54A	054A080S	054A080S	Top Harness Lug (2 req.)
54B	054B080S	054B080S	Harness Lug (2 req.)
55	055 080	055 080	Ball Bearing (4 req.)
55A	055 080ST	055 080ST	Ball Bearing (2 req.)
56	056 116	056 116	Rod Brace
56C	056C116	056C116	Rod Brace Assembly (Complete)
59	059 050	059 050	Slotted Washer
60	060 050	060 050	Backing Washer
62	062 050	062 050	Click Spring
63	063 030T	063 030T	Stand Screw (4 req.)
63A	063 349	063 349	Hold Down Screw (4 req.)
69	069 050	069 050	Locating Pin (2 req.)
69B	069B050	069B050	Retaining Ring (3 req.)
81	081 080S	081 080S	Ratchet
95A	095A020	095A020	Click Bushing Washer
95B	038 710	038 710	Click Bushing Nut
95C	095C080ST	095C080ST	Click Adjustment Ring
95N	095N080ST	095N080ST	Click Tongue Bushing
95R	095R080ST	095R080ST	Click O-Ring
95S	095S080ST	095S080ST	Click Spring Slider
95W	095W080ST	095W080ST	Eared Spring Washer
99	099 116	099 116	Harness Lug Screw Hook (Upper)
101	101 030	101 030	Ratchet Screw (6 req.)
110	110 050	110 050	Handle Lock Screw (3 req.)
110A	110A050	110A050	Handle Locking Plate
110T	110T050	110T050	Quadrant Screw (2 req.)
112	112 050	112 050	Eccentric Knob
112A	112A050	112A050	Eccentric Knob Screw
113	113 050	113 050	Eccentric Lever Cap
117	117 080ST	117 080ST	Drive Plate (Outer)
117A	117A080T	117A080T	Drive Plate (Inner)
118	101 080ST	101 080ST	Coupling Plate Screw (3 req.)
119	119 080ST	119 080ST	Coupling Plate
121	121 080ST	121 080ST	Gear Stud Screw
123	123 50	123 50	Drag Cover Screw (4 req.)
124	124 080ST	124 080ST	Bridge Cover
124A	124A080ST	124A080ST	Bearing Cover
134N	134N080ST	134N080ST	Gear Stud
134A	134A080ST	134A080ST	Bushing
134B	134B080ST	134B080ST	Grooved Spacer Bushing
134C	134C080ST	134C080ST	Gear Bushing
141	141 080	141 080	Cam Follower
142	142 050	142 050	Gear Stud Pin (2 req.)
142A	142 080ST	142 080ST	Cam Follower Pins (2 req.)
143	143 080	143 080	Adjusting Screw
144	144 050	144 050	Preset Knob
152A	152A080T	152A080T	Rod Clamp Acorn Nut
155	155 116	155 116	Turnbuckle (2 req.)
156	156 080S	156 080S	Drag Cover
157	157 050	157 050	Quadrant Spacer Bushing (2 req.)
161	161 050	161 050	Locating Pin Bushing (2 req.)
162	162 050	162 050	Locating Pin Spring (2 req.)
165	165 116	165 116	Harness Lug Screw Hook (Lower) (2 req.)
171	171 80ST	171 80ST	Plunger
172	172N080S	172N080S	Plunger Cap
173	173 050S	173 050S	Gear Retainer
183	183 080ST	183 080STW	Tube Frame
264	264 080T	264 080T	Stand Gasket

KEY NO.	80ST PART NO.	80STW PART NO.	DESCRIPTION
1	001N080ST	001N080ST	R. S. Plate Assembly
2	002 080	002 080	Quadrant Ring
3	003 080ST	003 080ST	Bridge
4	004 080	004 080	Cam Thrust Washer
4A	004 130	004 130	Gear Thrust Washer
5H	005 080HST	005 080HST	Main Gear High-Speed
5L	005 080LST	005 080LST	Main Gear Low-Speed
6A	006 155	006 155	Spacer Washer
7	007A080	007A080	Metal Drag Washer
13	013 080ST	013 080ST	Pinion Gear
	013 080STW	013 080STW	Pinion Gear
14	049 710	049 710	Dog Spring (2 req.)
15	015 130	015 130	Dog (2 req.)
16H	016T130	016T130	Hidden Bridge Screws (2 req.)
18	018 080W	018 080W	Disc Clutch Spring (4 req.)
18A	018 349	018 349	Gear Stud Spring
19	019H080	019H080	Eccentric Cam
21	021 080ST	021 080ST	Eccentric Lever
23	023 080ST	023 080ST	Handle Screw
24	024 80ST	024 80ST	Handle Complete
27	027 80ST	027 80ST	L.S. Plate Assembly
29	029L080S	029L080SW	Spool
30	030 080S	030 080S	Stand
31	031T020	031T020	Short Quadrant Screw
33R	033 130ST	033 130ST	Rod Clamp
34	034 080T	034 080T	Clamp Screw (2 req.)