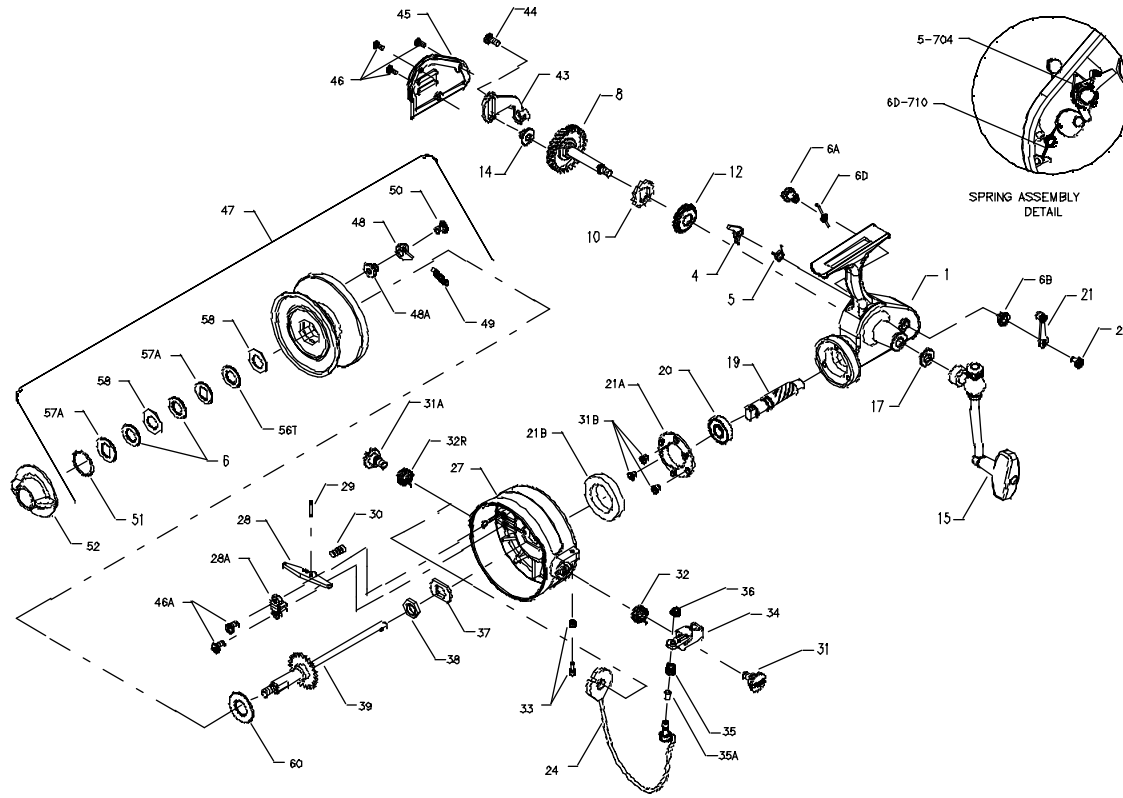




PARTS LIST FOR MODELS 704Z AND 705Z



| KEY NO. | PART NO. | DESCRIPTION |
|---------|-----------|---------------------------------|
| 1 | *001 704 | Housing w/Bushing |
| 4 | 004 704 | Dog |
| 5 | *005 704 | Dog Spring |
| 6 | 006 060 | Drag Washer-HT100 (2 req.) |
| 6A | 006A704 | Eccentric |
| 6B | 006B700Z | Eccentric Liner |
| 6D | 006D710 | Eccentric Spring |
| 8 | *008 704 | Main Gear w/Ratchet |
| 10 | 010 704 | Ratchet |
| 12 | 012 704 | Main Gear Thrust Washer |
| 14 | 014 710 | Crosswind Roller |
| 15 | *015 704 | Handle (Complete) |
| 17 | 017 710 | Handle Washer |
| 19 | 019 704 | Pinion Gear |
| 20 | 020 704 | Pinion Bearing |
| 21 | 021 109 | Eccentric Lever |
| 21A | 021 704 | Bearing Retainer |
| 21B | 021B704 | Rotor Brake |
| 22 | 022 109 | Eccentric Screw |
| 24 | 024 704 | Bail Wire |
| 27 | 027 704Z | Rotor Cup |
| 28 | 028 704 | Bail Release Arm |
| 28A | 028A704 | Bail Release Saddle |
| 29 | 029 704 | Bail Release Pin |
| 30 | 030 704 | Bail Release Spring |
| 31 | 031 700 | Bail Arm Screw |
| 31B | 031 700 | Bearing Cover Screw (3 req.) |
| 32 | 032 704 | Bail Spring |
| 32R | 032R704 | Secondary Bail Spring |
| 33 | 033 704 | Bumper |
| 34 | 034 704 | Bail Arm |
| 35 | 035 704 | Line Roller |
| 35A | 035A 704 | Roller Sleeve |
| 36 | 036 700 | Bail Lock Nut |
| 37 | 037 700 | Rotor Cup Washer |
| 38 | 038 704 | Rotor Cup Nut |
| 39 | 039 704 | Spool Shaft |
| 43 | *043 704 | Crosswind Arm |
| 44 | 044 704 | Crosswind Screw |
| 45 | *045 704Z | Housing Plate |
| 46 | 046A704 | Housing Plate Screw (3 req.) |
| 46A | 046A704 | Retaining Screw (2 req.) |
| 47 | 047 704Z | Spool (Complete) |
| 48 | 048 450 | Click Tongue |
| 48A | 048A750 | Click Tongue Washer |
| 49 | 049 710 | Click Spring |
| 50 | 022 750 | Click Screw |
| 51 | 051 704 | Retaining Spring |
| 52 | 052 750 | Drag Knob |
| 56T | 056T704 | Drag Washer (Teflon®) |
| 57A | 057A750 | Metal Keyed Washer (2 req.) |
| 58 | 058 704 | Metal Washer (Octagon) (2 req.) |
| 60 | 060 710 | Rear Drag Washer (Teflon®) |