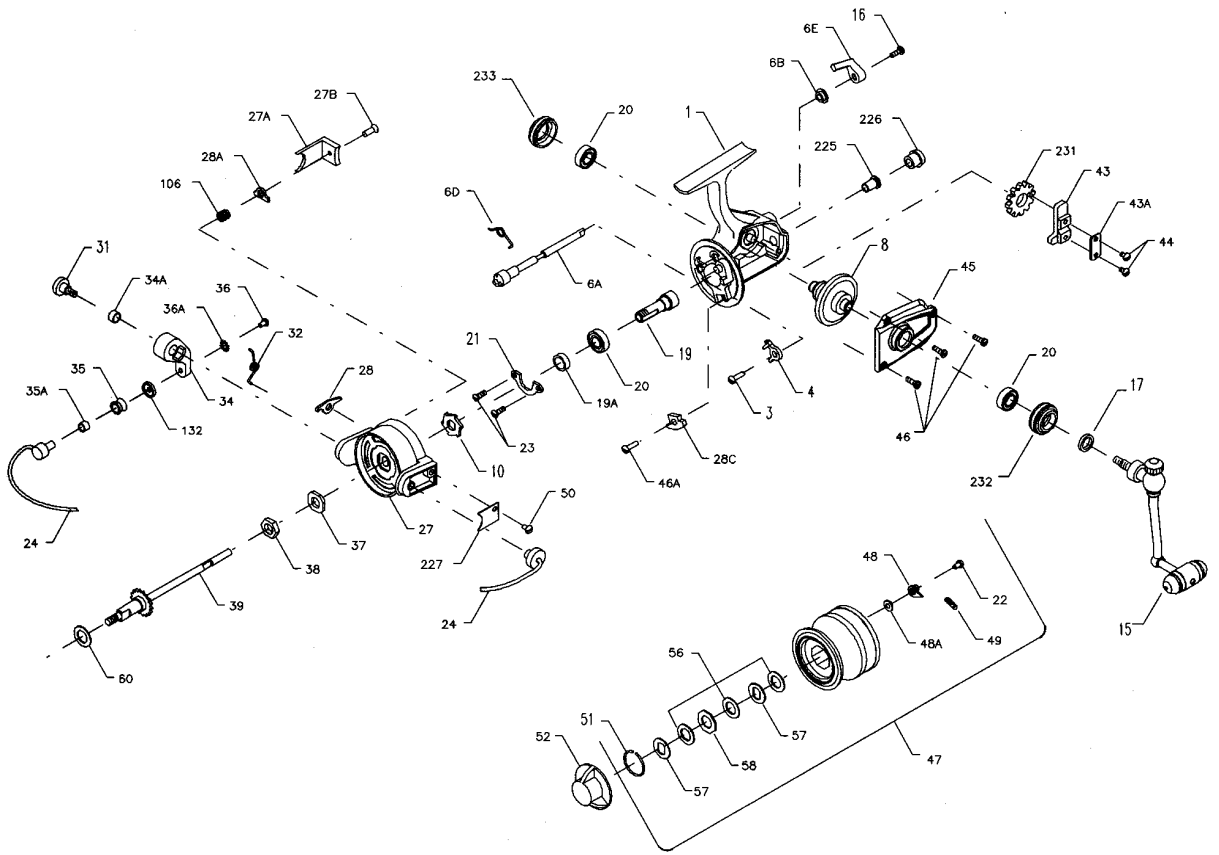




## PARTS LIST FOR MODEL 550SS



KEY NO.	DESCRIPTION	PART NO.
1	Housing	1-550
3	Dog Screw	3-750
4	Dog	4-450
6A	Eccentric	6A-550
6B	Eccentric Liner	6B-750
6D	Eccentric Spring	6D-710
6E	Anti-Reverse Lever	6E-750
8	Main Gear	8-450
10	Ratchet	10-550
15	Handle (Complete)	15N-650
16	Eccentric Screw	16-910
17	Seal Washer	17-450
19	Pinion	19-550
19A	Pinion Spacer	19A-550
20	Ball Bearing	20-722
21	Bearing Cover	21-550
22	Spool Click Screw	22-750
23	Bearing Cover Screw (2 req.)	23-750
24	Bail Wire	24-550
27	Rotor	27-550
27A	Rotor End Cap	27A-550
27B	Rotor End Screw	27B-550
28	Bail Release Jack	27-550
31	Bail Arm Screw	31-550
32	Bail Spring	32-550
34	Bail Arm	34-550
34A	Bail Arm Bushing	34A-550
35	Line Roller	35-750
35A	Line Roller Bushing	35A-704

KEY NO.	DESCRIPTION	PART NO.
36	Bail Stud Screw	36-750
36A	Lock Washer	36A-750
37	Rotor Washer	37-450
38	Rotor Nut	38-550
39	Crosswind Shaft	39-550
43	Crosswind Block	43-550
43A	Crosswind Block Plate	43A-550
44	Crosswind Block Screw (2 req.)	22-750
45	Housing Cover	45-550
46	Cover Screw (3 req.)	46-750
47	Spool (Complete)	47-550
48	Click Tongue	48-750
48A	Click Tongue Washer	48A-750
49	Click Tongue Spring	49-710
50	Bail Spring Cover Screw	50-712
51	Retaining Ring	51-710
52	Drag Knob	52-550
56	Drag Washer-HT100	56-710
57	Metal Slot Washer	57-710
58	Drag Washer (Octagon)	58-710
60	Thrust Washer (Teflon®)	60-550
106	Rotor End Spring	106-60
132	Roller Washer	132-750
225	Crosswind Shaft Bushing	225-550
226	Bushing Cap Screw	226-550
227	Bail Spring Cover	227-550
231	Crosswind Gear	231-550
232	Bearing Cover (Open)	232-650
233	Bearing Cover (Closed)	233-650