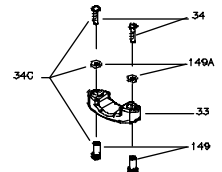
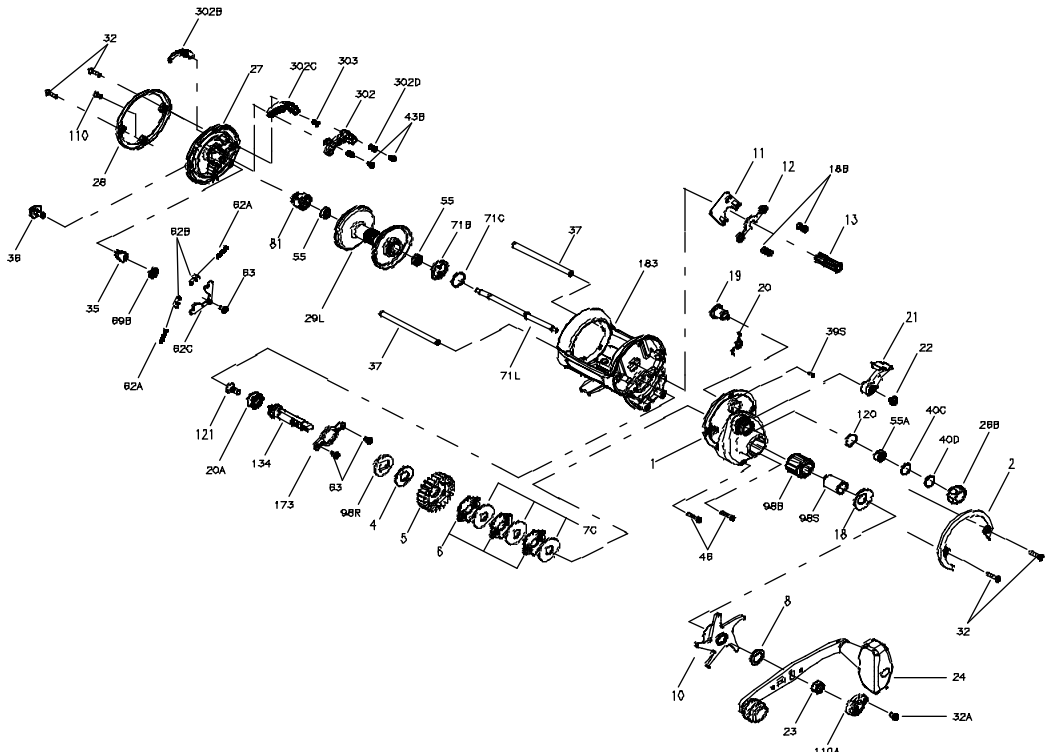




PARTS LIST FOR MODEL 525MAG



KEY NO.	DESCRIPTION	PART NO.
1	Right Side Plate	001 525MAG
2	Right Side Ring	002 525MAG
4	Fiber Washer	004 60
5	Main Gear	005 525MAG
6	Friction Drag Washer (3 req.)	006 525MAG
7C	Metal Drag Washer (3 req.)	007C525MAG
8	Tension Spring Washer (2 req.)	008 60
10	Drag Star	010 525
11	Eccentric Jack	011 525
12	Pinion Yoke	012 555
13	Pinion Gear	013 525MAG
18	Tension Spring Washer	018 505
18B	Clutch Spring (2 req.)	018 525
19	Eccentric	019 525

KEY NO.	DESCRIPTION	PART NO.
20	Eccentric Spring	020 525
20A	Ball Bearing	020 722
21	Eccentric Lever	021 525
22	Eccentric Screw	022 525
23	Handle Nut	023 555
24	Handle	024 525
26B	Spool Tension Control Cap	026B555
27	Left Side Plate	027 525MAG
28	Left Side Ring	028 525MAG
29L	Aluminum Spool	029L525MAG
32	Frame Post Screw (4 req.)	032 310
32A	Handle Lock Screw	032 015
33	Rod Clamp	033 525
34	Rod Clamp Screw (2 req.)	034 045
34C	Rod Clamp Screws w/Nuts	034C045
35	Click Tongue	035 525MAG
36	Click Button	036 525
37	Frame Post (2 req.)	037 525
39S	Right Side Plate Screw	039S965
40C	Metal Thrust Washer	040C555
40D	Rubber Thrust Washer	040D555
46	Side Plate Screw (2 req.)	046 4300
55	R.S. Spool Ball Bearing (2req.)	055-965
55A	Ball Bearing	055 113H
62A	Click Spring (2 req.)	014 040
62B	Click Pin (2 req.)	062B525MAG
62C	Click Spring Cover	062C525
63	Retainer Screw (3 req.)	063 500S
69B	Retaining Ring	069B600
71B	Clutch Plate	071B525MAG
71C	Clutch Plate Retainer	071C525MAG
71L	Spool Spindle	071L525MAG
81	Click Ratchet	081 525
98B	Anti-Reverse Bearing	098B-525
98R	Ratchet Spacer	098 525
98S	Clutch Shaft	098S525
110	Side Plate Short Screw	110 050
110A	Handle Nut Lock Cap	110A555
120	O-Ring	120 113H
121	Bearing Screw	121 525
134	Gear Stud	134 525
149	Rod Clamp Nut (2 req.)	149 045
149A	Rod Clamp Hex Nut (2 req.)	149 200
173	Bearing Retainer	173 525
183	Frame	183 525MAG
302	Magnet Housing	302 525MAG
302B	Magnet Control Button	302B525MAG
302C	Magnet Ramp	302C525MAG
302D	Magnet Spring (2 req.)	302D525MAG
303	Magnet Button Screw	303 525MAG