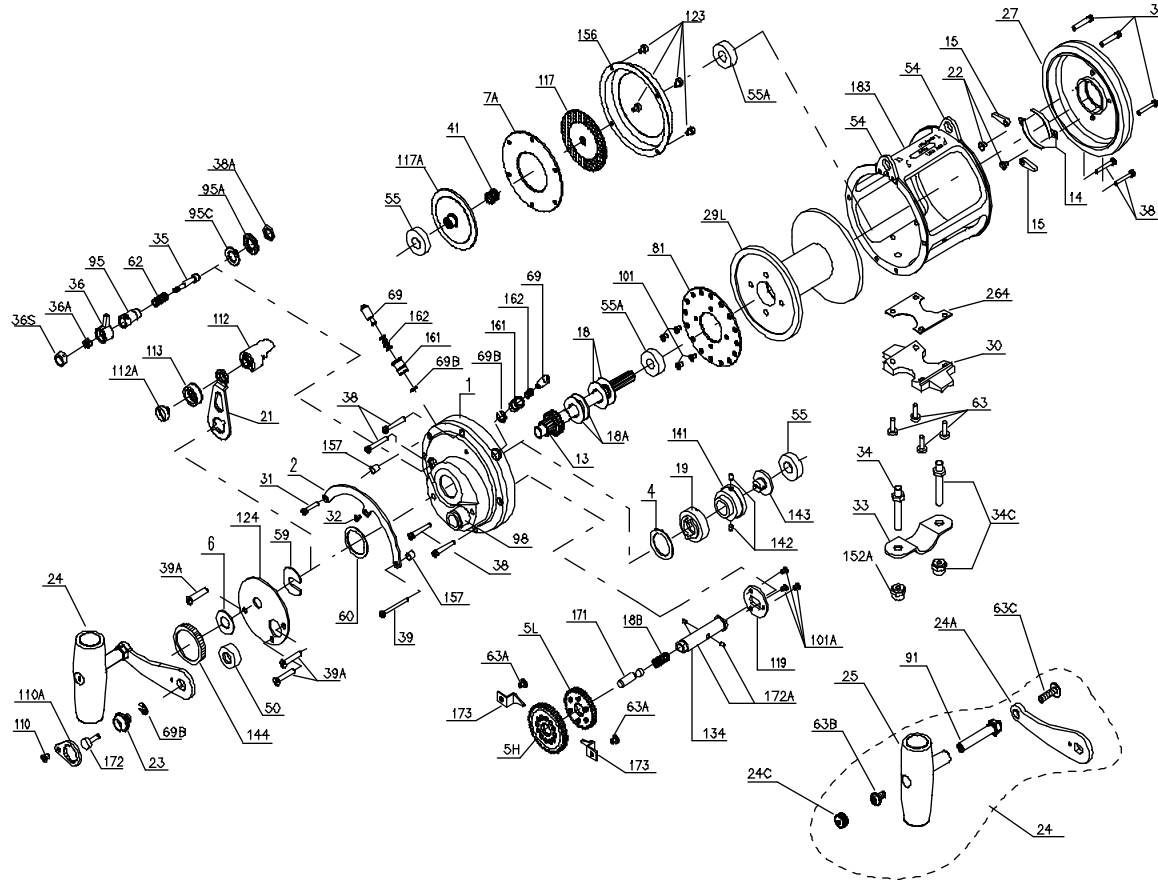




# PARTS LIST FOR MODEL 50S AND 50SW



407-50S Rev 1

KEY NO.	50S PART NO.	50SW PART NO.	DESCRIPTION
1	001 050SN	001 050SN	Right-Side Plate Assembly
2	002 050	002 050	Quadrant
4	004 050	004 050	Cam Thrust Washer
5H	005 050HS	005 050HS	Main Gear High-Speed
5L	005 050LS	005 050LS	Main Gear Low-Speed
6	006 155	006 155	Spacer Washer
7A	007A 050S	007A 050S	Floating Drag Washer
13	013 050S	013 050S	Pinion Gear
14	014 050	014 050	Dog Spring (2 req.)
15	015 050	015 050	Dog (2 req.)
18	018 050W	018 050W	

KEY NO.	50S PART NO.	50SW PART NO.	DESCRIPTION
18A	018 050TW	018 050TW	Disc Clutch Spring (2 req.)
18B	018 349	018 349	Gear Stud Spring
19	019 050W	019 050W	Eccentric Cam
21	021 050S	021 050S	Eccentric Lever
22	022 109	022 109	Dog Spring Screw
23	023 050S	023 050S	Handle Screw
24	024 050T	024 050T	Handle Complete
27	027 050T	027 050T	L.S. Plate Assembly
29L	029L050S	029L050SW	Spool
30	030 050T	030 050T	Stand
31	031 020	031 020	Short Quadrant Screw
32	032 014	032 014	Center Quadrant Screw
33	033 114	033 114	Rod Clamp
	*033R114	*033R114	Ringed Rod Clamp (Optional)
34	034 050T	034 050T	Clamp Screw (2 req.)
34C	034C050T	034C050T	Rod Clamp Screw w/Nut
35	035 080	035 080	Click Tongue
36	036 050	036 050	Click Button
36A	036 700	036 700	Click Button Nut
36S	036S080ST	036S080ST	Click Button Cap
38	038 050	038 050	Frame Screw (9 req.)
38A	038 710	038 710	Click Bushing Nut
39	039 050	039 050	Long Quadrant Screw
39A	039A080S	039A080S	Bridge Cover Screw (3 req.)
41	041 050S	041 050S	L.S. Bearing Spring
50	050 025	050 025	Gear Stud Cover
54	054 050T	054 050T	Harness Lug (2 req.)
55	055 050	055 050	Ball Bearing (2 req.)
55A	055 080	055 080	Ball Bearing (2 req.)
59	059 050	059 050	Slotted Washer
60	060 050	060 050	Backing Washer
62	062 050	062 050	Click Spring
63	063 030T	063 030T	Stand Screw (4 req.)
63A	063 349	063 349	Gear Retainer Screw (2 req.)
69	069 050	069 050	Locating Pin
69B	069B050	069B050	Retaining Ring (2 req.)
81	081 050	081 050	Ratchet
95	095 080	095 080	Click Tongue Bushing
95A	095A020	095A020	Click Bushing Washer
95C	095A050	095A050	Click Bushing Washer
98	098 050SN	098 050SN	Bridge Bushing
101	101 030	101 030	Ratchet Plate Screw (4 req.)
101A	101 050S	101 050S	Coupling Plate Screw (3 req.)
110	110 050	110 050	Handle Lock Screw
110A	110A050	110A050	Locking Plate
112	112 050	112 050	Eccentric Lever Knob
112A	112A050	112A050	Eccentric Screw
113	113 050	113 050	Eccentric Lever Cap
117	117 050S	117 050S	Outer Drive Plate Assembly
117A	117A050S	117A050S	Inner Drive Plate Assembly
119	119 030S	119 030S	Coupling Plate
123	123 050	123 050	Drag Cover Screw (4 req.)
124	124 050	124 050	Bridge Cover
134	134 050S	134 050S	Gear Stud
141	141 050	141 050	Cam Follower
142	142 050	142 050	Cam Follower Pin (2 req.)
143	143 050	143 050	Adjusting Screw
144	144 050	144 050	Preset Knob
152A	152A050T	152A050T	Rod Clamp Acorn Nut (2 req.)
156	156 050	156 050	Drag Cover
157	157 050	157 050	Quadrant Spacer Bushing (2 req.)
161	161 050	161 050	Locating Pin Bushing (2 req.)
162	162 050	162 050	Locating Pin Spring (2 req.)
171	171 050S	171 050S	Plunger
172	172 050S	172 050S	Plunger Cap
172A	172A050S	172A050S	Plunger Pin (2 req.)
183	183 050S	183 050SW	Tube Frame
264	264 030T	264 030T	Stand Gasket