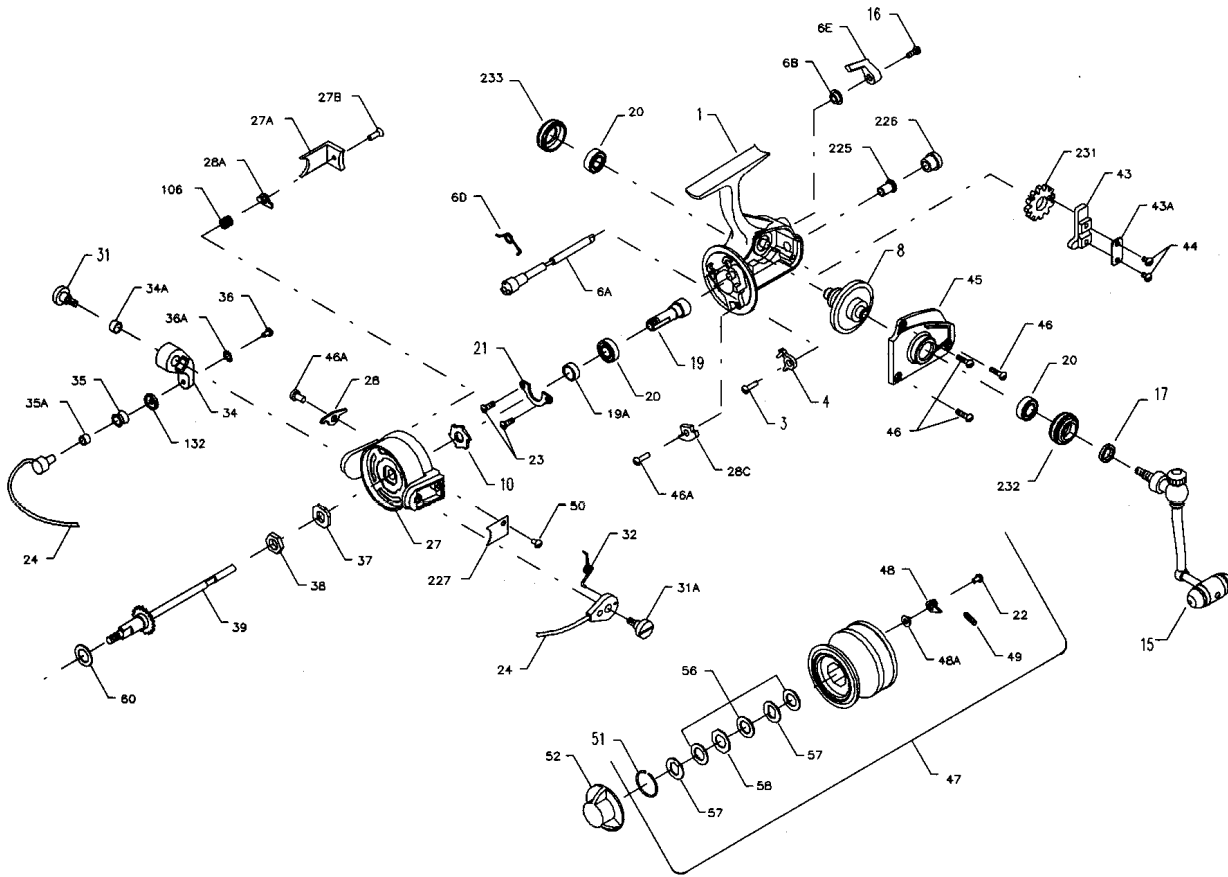




PARTS LIST FOR MODEL 450SS



NET NO.	DESCRIPTION	PART NO.	NET NO.	DESCRIPTION	PART NO.
1	Housing	1-450	35A	Line Roller Bushing	35A-704
3	Dog	3-750	36	Bail Stud Screw	36-750
4	Dog	4-450	36A	Lock Washer	36A-750
6A	Eccentric	6A-450	37	Rotor Washer	37-450
6B	Eccentric Liner	6B-750	38	Rotor Nut	38-550
6D	Eccentric Spring	6D-710	39	Crosswind Shaft	39-450
6E	Eccentric Lever	6E-750	43	Crosswind Block	43-450
8	Main Gear	8-450	43A	Crosswind Block Plate	43A-450
10	Ratchet	10-550	44	Crosswind Block Screw	22-750
15	Handle (Complete)	15-450	45	Housing Cover	45-450
16	Eccentric Screw	16-910	46	Cover Screw (3 req.)	46-75
17	Seal Washer	17-450	46A	Trip Cam Screw	46A-704
19	Pinion	19-450	47	Spool Complete	47-450
19A	Pinion Spacer	19A-550	48	Click Tongue	48-450
20	Ball Bearing	20-722	48A	Click Tongue Washer	48A-750
21	Bearing Cover	21-450	49	Click Tongue Spring	49-710
22	Spool Click Screw	22-750	50	Bail Spring Cover Screw	50-712
23	Bearing Cover Screw (2 req.)	23-750	51	Retaining Ring	51-710
24	Bail Wire	24-440	52	Drag Knob	52-550
27	Rotor	27-450	56	Drag Washer	56-710
27A	Bail Trip Cover	27A-450	57	Metal Slot Washer	57-710
27B	Rotor End Screw	27B-420	58	Metal Washer (Octagon)	58-710
28	Trip Lever	28-450	60	Thrust Washer (Teflon®)	60-450
28A	Cam Lever	28A-450	106	Lever Spring	106-450
28C	Trip Cam	28C-450	132	Roller Washer	132-450
31	Bail Arm Screw	31-550	225	Crosswind Shaft Bushing	225-500
31A	Trip Arm Screw	31A-450	226	Bushing Cap Cover	226-450
32	Bail Spring	32-450	227	Bail Spring Cover	227-450
34	Bail Arm	34-450	231	Crosswind Gear	231-450
34A	Bail Arm Bushing	34A-550	232	Bearing Cover (Open)	232-650
35	Line Roller	35-704	233	Bearing Cover (Closed)	233-650