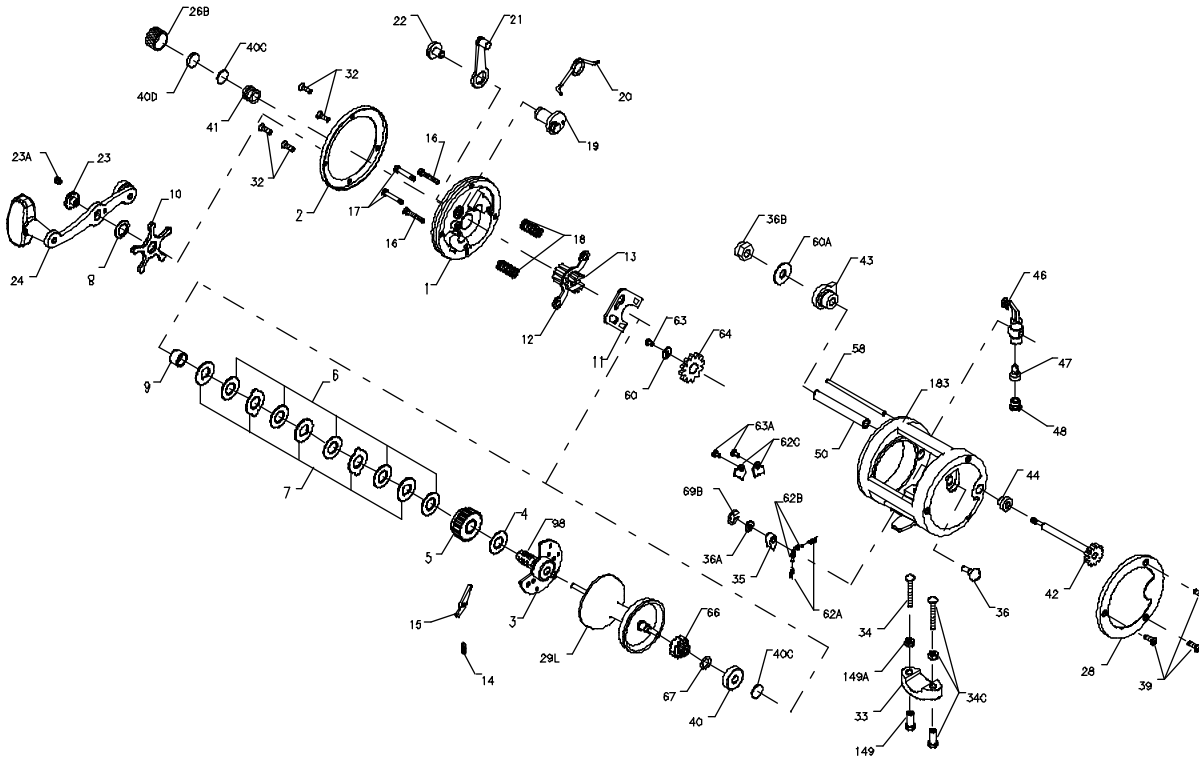




# MODEL 321GTi LH

# PARTS LIST FOR MODEL 321GTi



KEY NO.	PART NO.	DESCRIPTION
1	001 321LH	Right Side Plate
2	002 321LH	Side Ring
3	003 321LH	Bridge Assembly
4	004 349	Fiber Washer
5	005 321LH	Main Gear
6	006 320	Friction Drag Washer (5 req.)
7	007C970	Metal Drag Washer (Set of 5)
8	008 349	Tension Spring
9	009 320	Spacing Sleeve
10	010 321LH	Star Drag
11	011 321LH	Eccentric Jack
12	012 155	Pinion Yoke
13	013 321LH	Pinion Gear
14	014 330	Dog Spring
15	015 320	Dog
16	016 113H	Lower Bridge Screw (2 req.)
17	017 113H	Upper Bridge Screw (2 req.)
18	018 060	Clutch Spring (2 req.)
19	019 321LH	Eccentric Cam
20	020 321LH	Eccentric Spring
21	021 285	Eccentric Lever Assembly
22	022 060	Eccentric Screw
23	023 114	Handle Assembly Screw
23A	110 060	Handle Lock Screw
24	024 320	Handle Assembly
26B	026B320	Spool Tension Control Cap
28	028 321LH	Frame Ring
29L	029L320	Aluminum Spool
32	032 017	Side Plate Screw (5 req.)
33	033 113	Rod Clamp
	*033R 200	Ringed Rod Clamp (Optional)
34	034 045	Clamp Screw Only
34C	034C 045	Clamp Screw w/Nuts
35	035 310N	Click Tongue
36	036 310	Click Button
36A	036A 040	Click Button Washer
36B	036 700	Worm Shaft Nut
39	110 050	Frame Screw (3 req.)
40	040 320	Ball Bearing
40C	040C 320	Metal Thrust Washer (2 req.)
40D	040D 320	Rubber Thrust Washer
41	041 330	Right Side Thrust Spring
42	042 320N	Worm
43	043 320	Right Side Worm Bearing
44	044 320	Left Side Worm Bearing
46	046 320N	Line Guide Carriage
47	047 320	Pawl
48	048 330N	Pawl Cover Screw
50	050 320	Worm Shield
58	058 320	Line Guide Post
60	060 320	Idler Gear Washer
60A	060 320	Idler Gear Washer
62A	062A310	Click Spring (2 req.)
62B	062B310	Click Pin (2 req.)
62C	062C321LH	Click Spring Cover (2 req.)
63	063 500S	Idler Gear Screw
63A	063 500S	Click Spring Screw (2 req.)
64	064 320	Idler Gear
66	066 320	Spool Gear Click Ratchet
67	067 009	Spool Gear Lock Ring
69B	069B600	Retaining Ring (Click Button)
98	098 321LH	Gear Sleeve
149	149 045	Clamp Nut Only
149A	149 200	Hex Nut Only
183	183 321LH	Frame