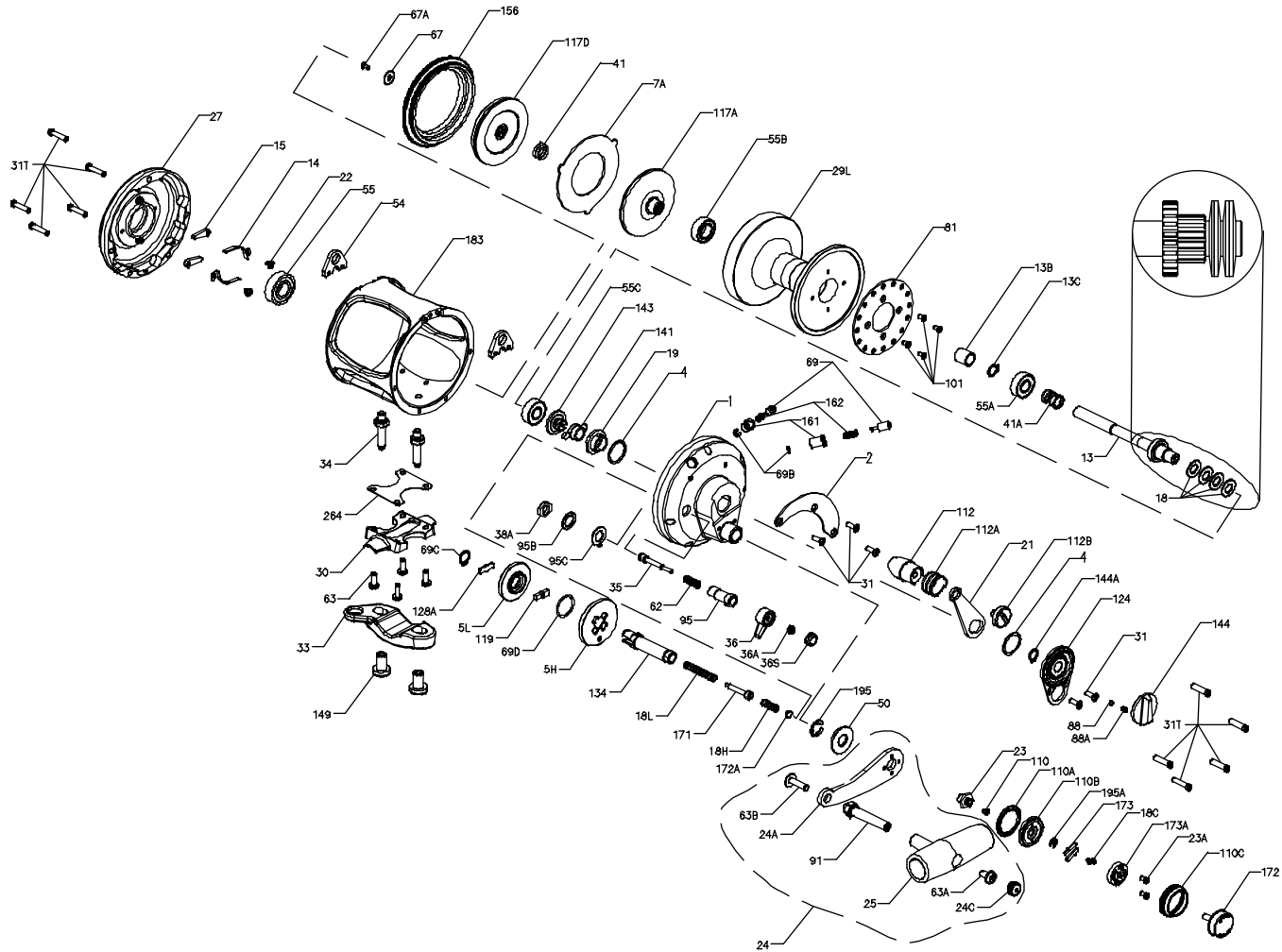




PARTS LIST FOR MODEL 30VSW



| KEY NO. | DESCRIPTION | PART NO. |
|---------|-------------------------------|-----------|
| 34 | Clamp Screw (2 req.) | 034 070 |
| 34C | Rod Clamp Screw w/Nut | 034C070 |
| 35 | Click Tongue | 035 070 |
| 36 | Click Button | 036 050 |
| 36A | Click Button Nut | 036 700 |
| 36S | Click Button Cap | 036S080ST |
| 38A | Click Bushing Nut | 038 710 |
| 41 | Bearing Spring | 041 2.5FR |
| 41A | Drag Spring | 041 040 |
| 50 | Shield | 050 030VS |
| 54 | Harness Lug (2 req.) | 054 030T |
| 55 | Ball Bearing | 055 080 |
| 55A | Ball Bearing | 020L704 |
| 55B | Ball Bearing | 055 080ST |
| 55C | Ball Bearing | 020L704 |
| 62 | Click Spring | 062 050 |
| 63 | Stand Screw (4 req.) | 063 030T |
| 63A | Screw | 063A050 |
| 63B | Screw | 063 050 |
| 67 | Pinion Gear Washer | 067 070 |
| 67A | Plate Screw | 067A070 |
| 69 | Locating Pin (2 req.) | 069 050 |
| 69A | Retaining Ring | 069B030S |
| 69B | Retaining Ring (2 req.) | 069B050 |
| 69C | Retaining Ring | 069C030S |
| 69D | Retaining Ring | 069C245 |
| 81 | Ratchet | 081 050 |
| 88 | Preset Knob Ball | 088 070 |
| 88A | Preset Knob Spring | 018C015KG |
| 91 | Handle Rivet | 091N050 |
| 95 | Click Tongue Bushing | 095 070 |
| 95B | Click Bushing Washer | 095A020 |
| 95C | Click Bushing Washer | 095A050 |
| 101 | Ratchet Screw (4 req.) | 101 030 |
| 110 | Handle Lock Screw | 110 060 |
| 110A | Ring | 110A030VS |
| 110B | Shift Base | 110B030VS |
| 110C | Shift Button Retainer | 110C030VS |
| 112 | Eccentric Lever Knob | 112 070 |
| 112A | Knob Sleeve | 112A070 |
| 112B | Eccentric Knob Screw | 112B070 |
| 117A | Drive Plate w/Drag Washer | 117A050S |
| 117D | Drive Plate w/Drag Washer | 117 050S |
| 119 | Shift Plate | 119 024KG |
| 124 | Bridge Cover | 124 030VS |
| 128A | Drive Plate | 128 024KG |
| 134 | Gear Stud | 134 030VS |
| 141 | Cam Follower | 141 030VS |
| 143 | Preset Screw | 143 030 |
| 144 | Preset Knob | 144 070 |
| 144A | Retaining Ring | 013C050VS |
| 149 | Rod Clamp Nut (2 req.) | 149 070 |
| 156 | Drag Cover | 156 030VS |
| 161 | Locating Pin Bushing (2 req.) | 161 050VS |
| 162 | Locating Pin Spring (2 req.) | 162 050 |
| 171 | Shift Plunger | 171 030VS |
| 172 | Shift Button | 172 030VS |
| 172A | Spacer | 172A015KG |
| 173 | Catch (2 req.) | 173 030VS |
| 173A | Catch Holder | 173A030VS |
| 183 | Tube Frame | 183 030VS |
| 195 | Retaining Ring | 195 040 |
| 195A | Shift Assembly Retaining | 195 030VS |
| 264 | Stand Gasket | 264 030T |

| KEY NO. | DESCRIPTION | PART NO. | KEY NO. | DESCRIPTION | PART NO. |
|---------|------------------------------|-------------|---------|----------------------------|------------|
| 1 | Right Side Plate Assembly | 001 030VS | 19 | Eccentric Cam | 019 030VS |
| 2 | Quadrant Ring | 002 030VS | 21 | Eccentric Lever | 021 030VS |
| 4 | Cam Thrust Washer (2 req.) | 004 012LT | 22 | Dog Spring Screw (2 req.) | 022 109 |
| 5H | Main Gear (High Speed) | 005 030VSHS | 23 | Screw | 023 030VS |
| 5L | Main Gear (Low Speed) | 005 030VLS | 23A | Screw (2 req.) | 038 110C |
| 7A | Metal Drag Washer | 007A030VS | 24 | Handle Complete | 024 030S |
| 13 | Pinion Gear | 013 030VSW | 24A | Handle Blank | 024N030S |
| 13B | Pinion Gear Sleeve | 013B070 | 24C | Handle Knob Cap | 024C050 |
| 13C | Retaining Ring | 013C030VS | 25 | Knob Assembly | 025 050 |
| 14 | Dog Spring (2 req.) | 014 050 | 27 | Left Side Plate-Assembly | 027 030VS |
| 15 | Dog (2 req.) | 015 050 | 29 | Spool | 029L030VSW |
| 18 | Disc Clutch Spring (4 req.) | 018 030 | 30 | Stand | 030 020T |
| 18C | Shift Button Spring (2 req.) | 018C015KG | 31 | Short Screw (5 req.) | 031T070 |
| 18H | Shift Spring (Heavy) | 018H015KG | 31T | Side Plate Screw (10 req.) | 031T080 |
| 18L | Shift Spring (Light) | 018L030VS | 33 | Rod Clamp | 033 070 |

SPECIFICATIONS AND PRE-SETTING OF DRAG

| LINE CAPACITY | GEAR RATIO | LINE CLASS | STRIKE SETTING | FULL OR MAX. SETTING |
|---------------|------------|------------|----------------|----------------------|
| 600yds/50 lb. | 3.8-1 HIGH | 50 lb | 12-17 lbs | 21-26 lbs |
| 900yds/30 lb. | 1.8 LOW | 30 lb | 8-10 lbs | 14-16 lbs |
| 650W 0,70mm | 3.8-1 HIGH | 24 kg | 5,5-8 kg | 9,5-12 kg |
| 825W 0,55mm | 1.8 LOW | 15 kg | 3,5-4,5 kg | 6-7 kg |