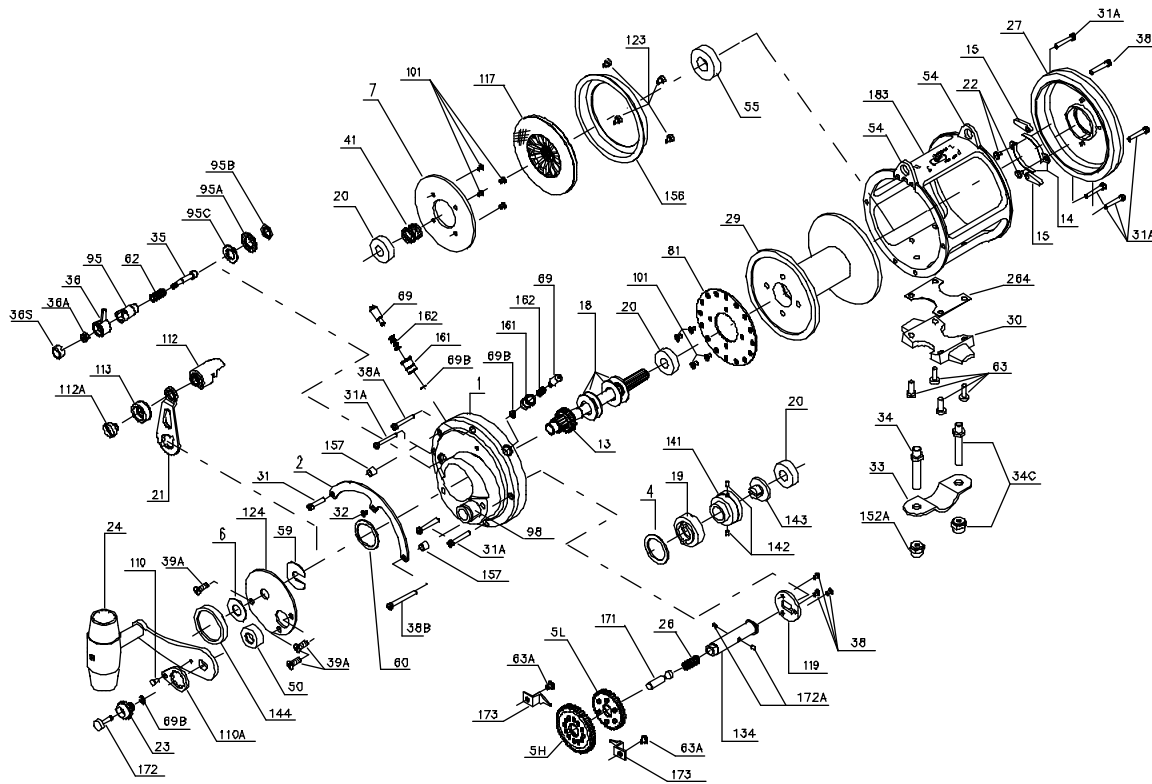




PARTS LIST FOR MODEL 30SW



KEY NO.	DESCRIPTION	PART NO.
23	Handle Screw	023 050S
24	Handle Complete	024 030TW
26	Gear Stud Spring	018 349
27	L.S. Plate Assembly	027 030T
29	Spool	029L030TW
30	Stand	030 020T
31	Short Quadrant Screw	031 020
31A	Frame Screw (7 req.)	031 080
32	Center Quadrant Screw	032 014
33	Rod Clamp	033 114
	Ringed Rod Clamp (Optional)	*033R114
34	Clamp Screw (2 req.)	034 050T
34C	Rod Clamp Screw w/Nut	034C050T
35	Click Tongue	035 050
36	Click Button	036 050
36A	Click Button Nut	036 700
36S	Click Button Cap	036S080ST
38	Coupling Plate Screw (3 req.)	101 050S
38A	Frame Screw (2 req.)	038 050
38B	Long Quadrant Screw	038 080
39A	Cover Screw (3 req.)	039A080S
41	L.S. Bearing Spring	041 050
50	Shield	050 030S
54	Harness Lug (2 req.)	054 030T
55	Ball Bearing	055 080
59	Slotted Washer	059 050
60	Backing Washer	060 050
62	Click Spring	062 050
63	Stand Screw (4 req.)	063 030T
63A	Hold Down Screw	063 349
69	Locating Pin (2 req.)	069 050
69B	Retaining Ring (3 req.)	069B050
81	Ratchet	081 050
95	Click Tongue Bushing	095 050
95A	Click Bushing Washer	095A020
95B	Click Bushing Nut	038 710
95C	Click Bushing Washer	095A050
98	Bridge Bushing	098 030SN
101	Drive Plate Screw (8 req.)	101 030
110	Handle Lock Screw	110 050
110A	Handle Locking Plate	110A050
112	Eccentric Lever Knob	112 050
112A	Eccentric Knob Screw	112A 050
113	Eccentric Lever Cap	113 050
117	Drive Plate w/ Drag Washer	117D 030
119	Coupling Plate	119 030S
123	Drag Cover Screw (4 req.)	123 050
124	Bridge Cover	124 030S
134	Gear Stud	134 050S
141	Cam Follower	141 030
142	Cam Follower Pin (2 req.)	142 050
143	Adjusting Screw	143 030
144	Preset Knob	144 050
152A	Rod Clamp Acorn Nut (2 req.)	152A050T
156	Drag Cover	156 030T
157	Quadrant Spacer Bushing (2 req.)	157 050
161	Locating Pin Bushing (2 req.)	161 050
162	Locating Pin Spring (2 req.)	162 050
171	Plunger	171 050S
172	Plunger Cap	172 050S
172A	Plunger Pin (2 req.)	172A 050S
173	Gear Ratainer	173 050S
183	Tube Frame	183 030SW
264	Stand Gasket	264 030T

KEY NO.	DESCRIPTION	PART NO.
1	Right-Side Plate Assembly	001 030SN
2	Quadrant Ring	002 030
4	Cam Thrust Washer	004 030
5H	Main Gear High Speed	005 030HS
5L	Main Gear Low Speed	005 030LS
6	Spacer Washer	006 155
7	Metal Drag Washer	007 030
13	Pinion Gear	013 030SW
14	Dog Spring (2 req.)	014 050
15	Dog (2 req.)	015 050
18	Disc Clutch Spring (4 req.)	018 030T
19	Eccentric Cam	019 020
20	Ball Bearing (3 req.)	020 704
21	Eccentric Lever	021 030S
22	Dog Spring Screw (2 req.)	022 109