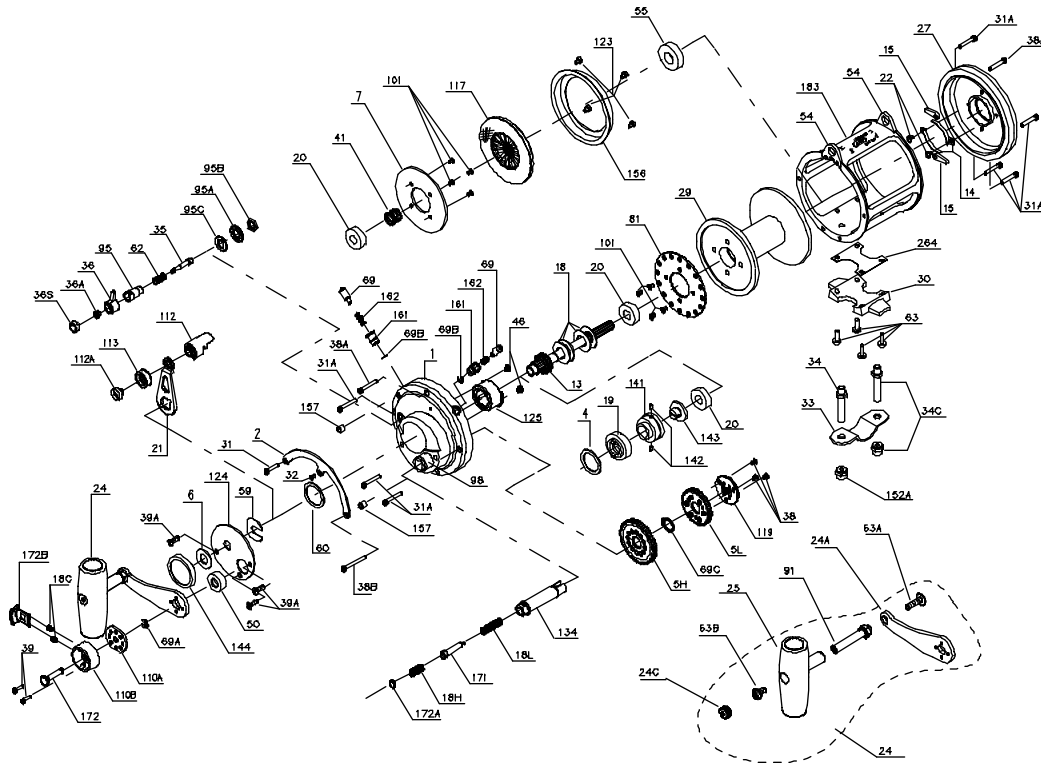




PARTS LIST FOR MODEL 30S



KEY NO.	DESCRIPTION	PART NO.	PART NO.
30	Stand	030 020T	
31	Short Quadrant Screw	031T020	
31A	Frame Screw (7 req.)	031 080	
32	Center Quadrant Screw	032 014CH	
33	Rod Clamp	033 990	
34	Clamp Screw (2 req.)	034 050T	
34C	Rod Clamp Screw w/Nut	034C050T	
35	Click Tongue	035 050N	
36	Click Button	036 050	
36A	Click Button Nut	036 700	
36S	Click Button Cap	036S080ST	
38	Coupling Plate Screw (3 req.)	101 050S	
38A	Frame Screw (2 req.)	038T050	
38B	Long Quadrant Screw	038T080	
39	Shift Housing Screw (2 req.)	039 001	
39A	Cover Screw	039A080S	
41	L.S. Bearing Spring	041 050	
46	Cam Housing Screw (2 req.)	046A704	
50	Shield	050N030S	
54	Harness Lug (2 req.)	054 030T	
55	Ball Bearing	055 080	
59	Slotted Washer	059 050	
60	Backing Washer	060 050	
62	Click Spring	062 050	
63	Stand Screw (4 req.)	063 030T	
63A	Screw	063A050	
63B	Screw	063 050	
69	Locating Pin (2 req.)	069 050	
69A	Retaining Ring	069B030S	
69B	Retaining Ring (2 req.)	069B050	
69C	Retaining Ring	069C030S	
81	Ratchet	081 050	
91	Handle Rivet	091N050	
95	Click Tongue Bushing	095 050	
95A	Click Bushing Washer	095A020	
95B	Click Tongue Bushing	038 710	
95C	Click Bushing Washer	095A050	
98	Bridge Bushing	098030SN	
101	Drive Plate Screw (8 req.)	101 030	
110A	Handle Locking Plate	110A015KG	
110B	Handle Lock Cover	110B015KG	
112	Eccentric Lever Knob	112 050	
112A	Eccentric Knob Screw	112A050	
113	Eccentric Lever Cap	113 050	
117	Drive Plate w/ Drag Washer	117D030	
119	Coupling Plate	119015KG	
123	Drag Cover Screw (4 req.)	123 050	
124	Bridge Cover	124 030S	
125	Eccentric Cam Housing	125 030S	
134	Gear Stud	134 030S	
141	Cam Follower	141 030	
142	Cam Follower Pin (2 req.)	142 050	
143	Adjusting Screw	143 030	
144	Preset Knob	144 050	
152A	Rod Clamp Nut (2 req.)	152A050T	
156	Drag Cover	156 030T	
157	Quadrant Spacing Bushing (2 req.)	157 050	
161	Locating Pin Bushing (2 req.)	161 050	
162	Locating Pin Spring (2 req.)	162 050	
171	Plunger	171015KG	
172	Shift Button	172015KG	
172A	Spring Spacer	172A015KG	
172B	Shift Release Button	172B015KG	
183	Tube Frame	183 030S	

KEY NO.	DESCRIPTION	PART NO.
1	Right Side Plate Assembly	001 030SN
2	Quadrant Ring	002 030
4	Cam Thrust Washer	004 030
5H	Main Gear (High Speed)	005N030HS
5L	Main Gear (Low Speed)	005 030LS
6	Spacer Washer	006 155
7	Metal Drag Washer	007 030
13	Pinion Gear	013 030S
14	Dog Spring (2 req.)	014 050
15	Dog	015 050
18	Disc Clutch Spring (4 req.)	018 030
18C	Shift Button Spring (2 req.)	018C015KG
18H	Shift Spring (Heavy)	018H015KG
18L	Shift Spring (Light)	018L015KG
19	Eccentric Cam	019 030W
20	Ball Bearing	020 704
21	Eccentric Lever	021 030S
22	Dog Spring Screw (2 req.)	022 109
24	Handle Complete	024 030S
24A	Handle Blank	024 030S
24C	Handle Knob Cap	024C050
25	Knob Assembly	025 050
27	Left Side Plate-Assembly	027 030T
29	Spool	029I 030T