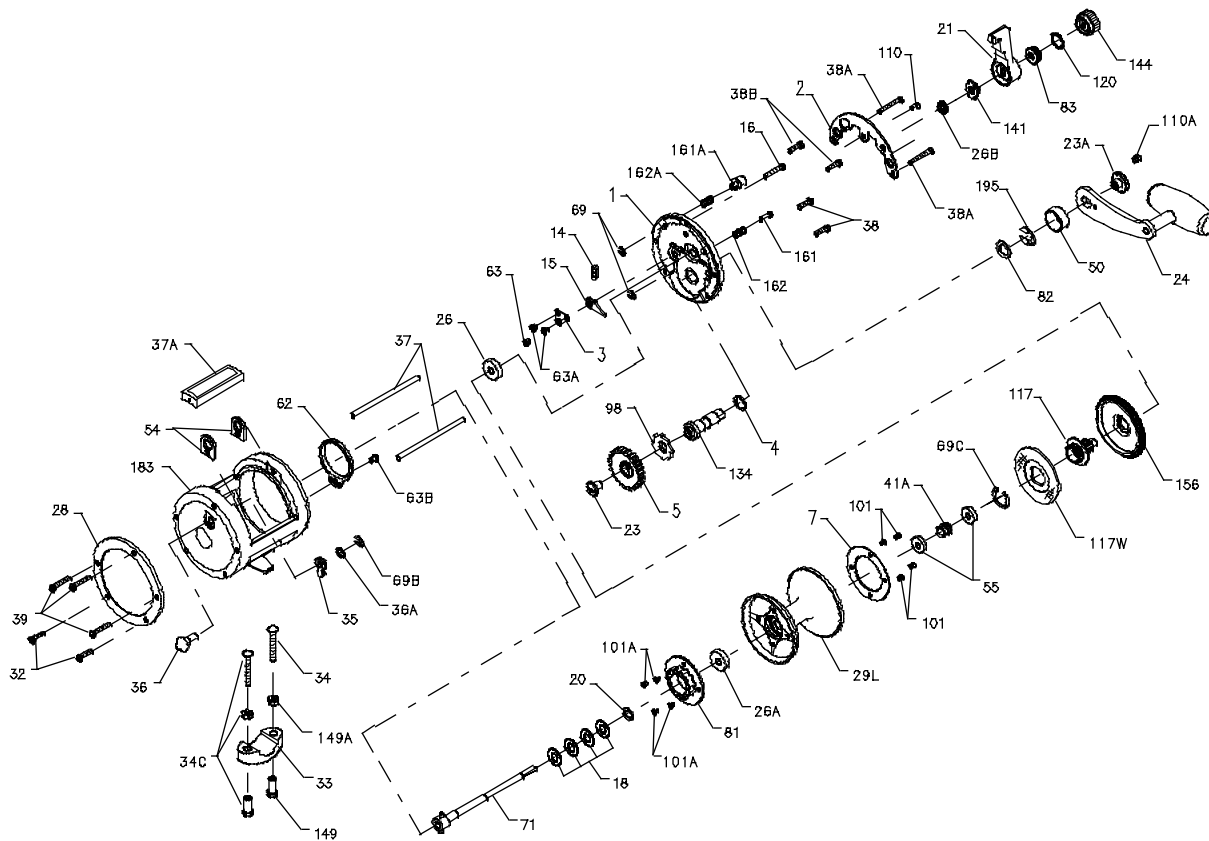




PARTS LIST FOR MODEL 245LD



KEY NO.	DESCRIPTION	PART NO.
24	Handle Assembly	024 040P
26	R.S. Plate Ball Bearing	026N040
26A	L.S. Spool Ball Bearing	026 040
26B	R.S. Bushing	026 045
28	Left Side Ring	028 040
29L	Spool Assembly	029L245
32	Lower L.S. Ring Screw (2)	032 310
33	Rod Clamp	033 113
	Ringed Rod Clamp	*033R200
34	Rod Clamp Screw (2)	034 045
35	Click Tongue	035 040
36	Click Button	036N209
36A	Click Button Washer	036A040
37	Frame Post (2)	037 040
37A	Top Spacer Bar	037A245
38	Lower R.S. Plate Screw (2)	039 005
38A	R.S. Post Screw (2)	038 040
38B	Upper R.S. Plate Screw (2)	032 022
39	L.S. Post Screw (3)	039 009
41A	Bearing Spring	041A045
50	Gear Stud Cover	050 040
54	Harness Lug (2)	054 113
55	R.S. Spool Ball Bearing (2)	055 006
62	Click Spring	062 040
63	Lower Dog Bridge Screw	063 349
63A	Upper Dog Bridge Screw (2)	063 500S
63B	Click Spring Screw	063 500S
69	Retaining Ring (2)	069B050
69B	Click Button Retaining Ring	069B600
69C	Retaining Ring	069C245
71	Spool Spindle Assembly	071 040
81	Click Ratchet.	081 040
82	Handle Shim	082 040
83	Preset Collar	083 245
98	Main Gear Ratchet	098 040
101	Metal Drag Washer Screw (4)	101 030
101A	Click Ratchet Screw (4)	101 030
110	Quadrant Ring Screw	110 050
110A	Handle Lock Screw	110 060
117	Drive Plate Assembly	117 245
117W	Drive Plate Washer	117W245
120	O-Ring	120 245
134	Gear Stud	134 040
141	Lever Cam Follower	141 245
144	Pre-Set Knob	144 040
149	Rod Clamp Nut (2)	149 045
149A	Hex Nut (2 req.)	149 200
156	Drag Cover	156 245
161	Free Spool Button	161 025
161A	Strike Button Assembly	161 040
162	Free Spool Button Spring	162 050
162A	Strike Button Spring	162 050
183	Frame Assembly	183 245
195	Gear Stud Retaining Ring	195 040

KEY NO.	DESCRIPTION	PART NO.
1	Right Side Plate Assembly	001 245
2	Quadrant Ring	002 040
3	Dog Bridge	003 040
4	Gear Stud Washer	004 040
5	Main Gear	005 045
7	Metal Drag Washer	007 040
14	Dog Spring.	014 040
15	Dog	015 040
16	Top R.S. Plate Screw	016 009
18	Clutch Disc Spring (4)	018 040
20	Thrust Washer	020 040
21	Drag Lever Assembly	021 245
23	Gear Mounting Screw	023 006CH
23A	Handle Screw Assembly	023 114

SPECIFICATIONS AND PRE-SETTING OF DRAG

LINE CAPACITY	GEAR RATIO	LINE CLASS	STRIKE SETTING	FULL OR MAX. SETTING
<u>475yds/30 lb</u>	3.9-1	<u>30 lb</u>	<u>7-10 lb</u>	<u>12-16 lb</u>
435M/0,55 mm		15 kg	3-4,5 kg	5,5 - 7 kg