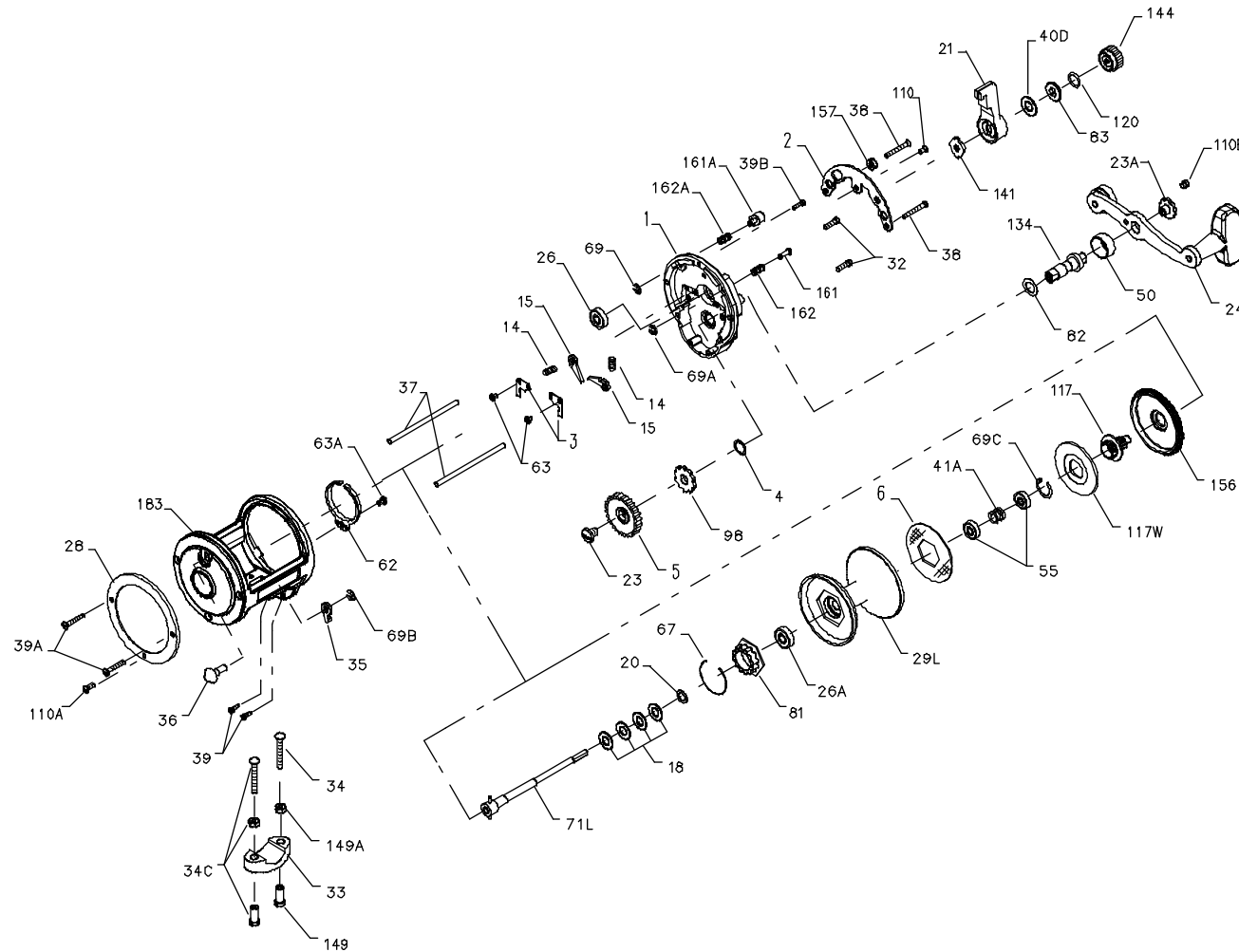




PARTS LIST FOR MODEL 225LD



KEY NO.	DESCRIPTION	PART NO.
21	Drag Cam Lever	021R225
23	Gear Mounting Screw	023 006CH
23A	Handle Screw	023 114
24	Handle	024 225
26	Ball Bearing Drive Plate	026N025
26A	L.S. Spool Bearing	026N025
28	L.S. Ring	028 025
29L	Spool	029L225N
32	Lower Plate Screw (2 req.)	031 210
33	Rod Clamp	033 113
*	Ringed Rod Clamp (Optional)	*033R200
34	Clamp Screw (Only)	034 045
34C	Rod Clamp Screw w/Nuts	034C045
35	Click Tongue	035 025
36	Click Button	036 025
37	Post (2 req.)	037 040
38	R.S. Post Screw (2 req.)	038 040
39	Frame Screw (2 req.)	046 4300
39A	L.S. Post Screw (2 req.)	039 009
39B	R.S. Screw	032 002
40D	Friction Washer	040D025
41	Pre-Set Knob Spring	041N045
41A	Bearing Spring	041 225
50	Gear Stud Cover	050 025
55	Spool Bearing (2 req.)	055 116
62	Click Spring	062 025
63	Bridge Mounting Screw (2 req.)	063 500S
63A	Click Spring Screw	063 500S
67	Ratchet Retaining Ring	067 025
69	Strike Button Retaining Ring	069B050
69A	Free Spool Button Retaining Ring	069B050
69B	Click Tongue Retaining Ring	069B600
69C	Retaining Ring	069C225
71L	Spool Spindle Assembly	071L225
81	Click Ratchet	081 025
82	Handle Shim	082 025
83	Pre-Set Collar	083 225
98	Main Gear Ratchet	098 225
110	R.S. Quadrant Screw	110 050
110A	L.S. Stand Screw	110 050
110B	Handle Lock Screw	110 060
117	Drive Plate Assembly	117 225
117W	Drive Plate Washer	117W225
120	O-Ring	120 113H
134	Gear Stud	134 025
*	Gear Stud Washer	*134A025
141	Cam Follower	141 225
144	Pre-Set Knob	144 025
149	Clamp Nut (2 req.)	149 045
149A	Hex Nuts (2 req.)	149 200
156	Drag Cover	156 225
157	Quadrant Spacer	157 225
161	Free Spool Button	161 025
161A	Strike Button	161 040
162	Free Spool Button Spring	162 050
162A	Strike Button Spring	162 050
183	Frame	183 225

SPECIFICATIONS AND PRE-SETTING OF DRAG

LINE CAPACITY	GEAR RATIO	LINE CLASS	STRIKE SETTING	FULL OR MAX. SETTING
<u>425yds/20 lb</u> 390M/0.45mm	4.3-1	<u>20 lb</u> 10 kg	<u>4-7 lb</u> 1,8 - 3 kg	<u>10-12 lb</u> 4,5 - 5,5 kg

KEY NO.	DESCRIPTION	PART NO.
1	Right Side Plate	001 225
2	Quadrant Ring	002 025
3	Dog Bridge (2 req.)	003 225
4	Gear Stud Washer	004 025
5	Main Gear	005 225
6	Drag Washer HT-100	006 225
13	Pinion Gear	013N025
14	Dog Spring (2 req.)	014 099
15	Dog (2 req.)	015N025
18	Clutch Disc Spring (4 req.)	018 040
20	Thrust Washer	020 040

*Not Shown