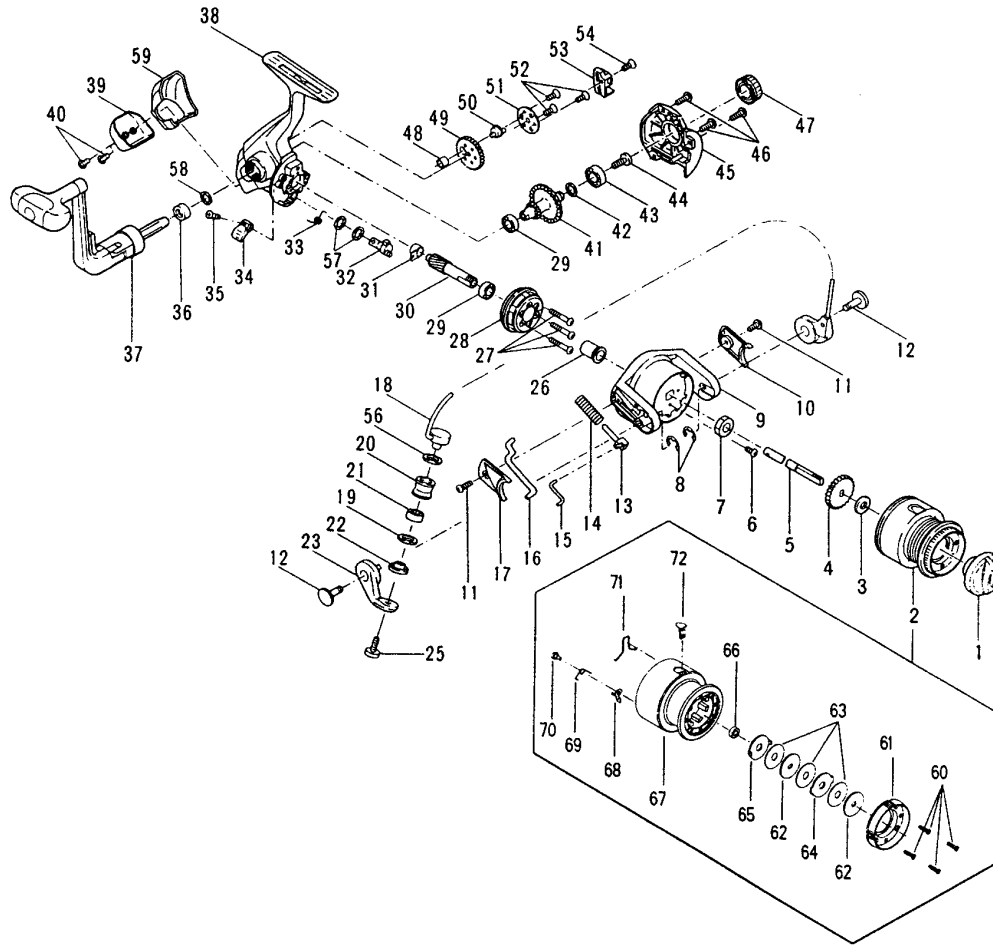




MODEL PRION 1200



KEY NO.	PART NO.	DESCRIPTION
1	052 900	Drag Knob Asm.
2	047 1200	Spool Assembly
3	060 1000	Thrust Washer
4	040B1000	Click Ratchet
5	039 900	Spool Shaft
6	038A900	Rotor Nut Lock
7	038 1000	Rotor Nut
8	037 900	E-Ring (2)
9	027 1200	Rotor
10	227 900	Rotor Cover 'B'
11	050 1000	Cover Screw (2)
12	031A900	Trip Arm Screw (2)
13	034B1000	Pivot Shaft

PARTS LIST FOR MODEL 1200

KEY NO.	PART NO.	DESCRIPTION
14	034C900	Pivot Spring
15	034A1500	Pivot Arm
16	034D1200	Pivot Arm Kick Lever
17	027A1200	Rotor Cover 'A'
18	024 1200	Bail Wire Assembly
19	132 900	Washer
20	035 900	Line Roller
21	035A900	Ball Bearing
22	035B900	Collar
23	034 900	Bail Arm
25	036 900	Line Roller Screw
26	019A900	Spacer
27	020A900	Screw (3)
28	020 900	One Way Clutch
29	020B900	Ball Bearing (2)
30	019 900	Pinion Gear
31	019B900	Rear Pinion Bushing
32	028 900	Anti-Reverse Lever Cam
33	028B900	Anti-Reverse Lever Spring
34	028A900	Anti-Reverse Lever
35	006F900	Lever Mtg. Screw
36	015A900	Handle Spacer
37	015 900	Handle Assembly
38	001 900	Main Body
39	001A900	Housing Protector
40	001C900	Housing Protector Screws (2)
41	008 900	Main Gear
42	008A1000	Main Gear Shim
43	055 895	Ball Bearing
44	009A1000	Handle Retaining Screw
45	002A900	Side Plate
46	046 1000	Screw (3)
47	233 900	Bearing Cover
48	231A900	Crosswind Cam Collar
49	231 900	Crosswind Gear
50	231B900	Crosswind Cam
51	231C900	Crosswind Pressure Plate
52	231D900	Crosswind Gear Screw (3)
53	043 900	Crosswind Block
54	044 900	Crosswind Block Screw
56	008A1500	Upper Roller Washer
57	028C900	Washer (2)
58	015B900	Washer
59	001B900	Housing Cover
60	051A900	Drag Cover Screw (4)
61	051 900	Drag Cover
62	057 900	Keyed Drag Washer (2)
63	006 900	Drag Washer (3)
64	058 900	Eared Drag Washer
65	058A900	Eared Drag Washer
66	035A900	Spool Ball Bearing
67	048 900	Spool (Only)
68	048C900	Click Tongue
69	048B900	Click Spring
70	047B900	Click Screw
71	047A900	Line Clip Retainer
72	001 900	Line Clip
**	047F1200	Spool Flange
**	051B900	Spool Flange Screw (4)