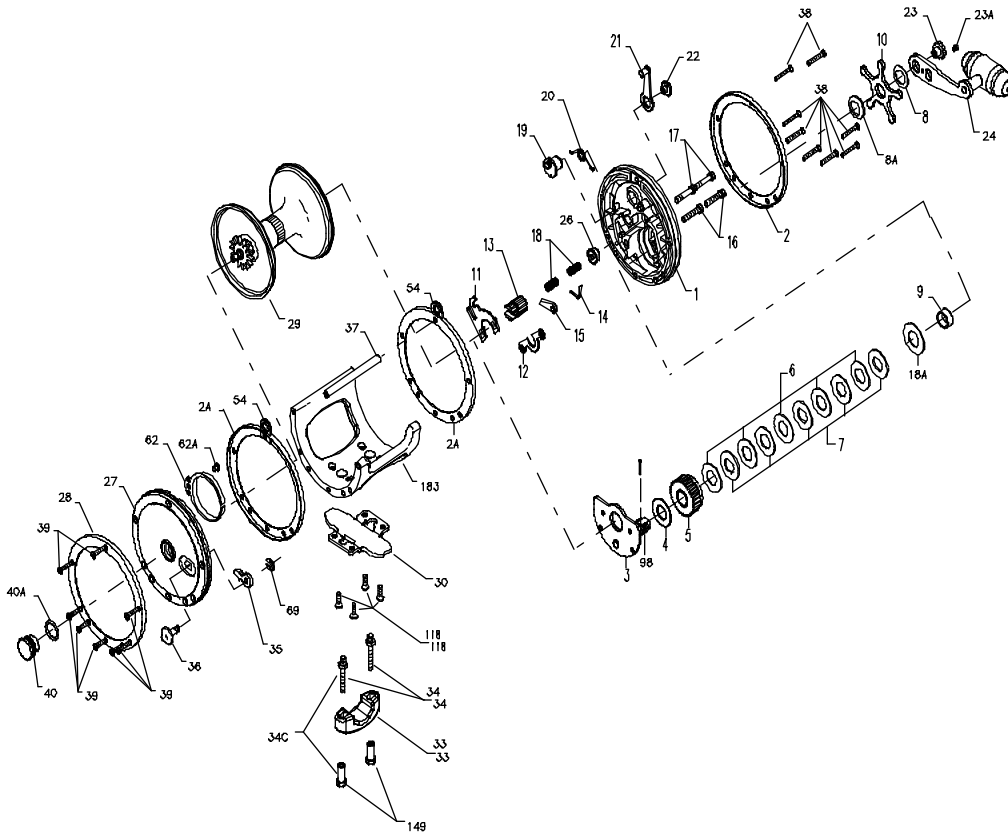




PARTS LIST FOR MODELS 114H, 114HL, AND 114HLW



KEY NO.	114H PART NO.	114HL PART NO.	114HLW PART NO.	DESCRIPTION
1	001 114H	001 114H	001 114H	Right Side Plate
2	002 114H-O	002 114H-O	002 114H-O	Outer Right Side Ring
2A	002 114-I	002 114-I	002 114-I	Inner Side Ring (2 req.)
3	003 114H	003 114H	003 114H	Bridge w/Sleeve
4	004 115	004 115	004 115	Fiber Washer
5	005 115	005 115	005 115	Main Gear
6	006 115	006 115	006 115	Drag Washer (5 req.)
7	007C115	007C115	007C115	Metal Drag Washer Set
8	008 114	008 114	008 114	Tension Spring (Set of 2)
8A	008 115	008 115	008 115	Tension Spring
9	009 114H	009 114H	009 114H	Spacing Sleeve
10	010 114	010 114	010 114	Star Drag Wheel
11	011 114	011 114	011 114	Eccentric Jack
12	012 114	012 114	012 114	Pinion Yoke
13	013 114H	013 114H	013 114H	Pinion
14	014 114	014 114	014 114	Dog Spring
15	015 114H	015 114H	015 114H	Dog
16	016 114	016 114	016 114	Lower Bridge Screw (2 req.)
17	017 114	017 114	017 114	Upper Bridge Screw (2 req.)
18	018 114	018 114	018 114	Clutch Spring (2 req.)
18A	018 114H	018 114H	018 114H	Spring Disc
19	019 114	019 114	019 114	Eccentric
20	020 114	020 114	020 114	Eccentric Spring
21	021 114	021 114	021 114	Eccentric Lever
22	023 060	023 060	023 060	Eccentric Screw
23	023 116	023 116	023 116	Handle Screw
23A	110 060	110 060	110 060	Handle Lock Screw
24	024 115	024 057	024 057	Handle
26	026 116	026 116	026 116	R.S. Bearing
27	027N114H	027N114H	027N114H	Left Side Plate
28	002 114-O	002 114-O	002 114-O	Outer Left Side Ring
29L	029M114H	029L114HL	029L114HLW	Spool
30	030 114	030 114HL	030 114HL	Stand
31	031 011			R.S. Stand Screw (3 req.)
32	032 020			L.S. Stand Screw (3 req.)
33	033 340	033 340	033 340	Rod Clamp
34	*033R114	*033R114	*033R114	Ringed Rod Clamp (Optional)
34C	034 045	034 114HLW	034 114HLW	Clamp Screw (2 req.)
34C	034C045			Rod Clamp Screw (2 req.)
35	035 114	035 114	035 114	Rod Clamp Screw w/Nuts
36	036 114H	036 114H	036 114H	Click Tongue
37	037 114 (5req.)	037 114	037 115	Click Button
38	039 013 (5 req.)	039 012 (8 req.)	039 012 (8 req.)	Frame Post
39	032 012 (5 req.)	032 021 (8 req.)	032 021 (8 req.)	R.S. Plate Screw
40	040 114HL	040 114HL	040 114HL	L.S. Plate Screw
40A	120 114H	120 114H	120 114H	Left Side Bearing
54	054 114	054 114	054 114	Left Side Bearing O-Ring
62	062 114	062 114	062 114	Harness Lug (2 req.)
62A	063 209	063 209	063 209	Click Spring
69	069B600	069B600	069B600	Click Spring Screw
98	098 114	098 114	098 114	Retaining Ring
118		118 080	118 080	Gear Sleeve
149	149 045	149 045	149 045	Stand Screws (4 req.)
149A	149 200			Rod Clamp Nut (2 req.)
183		183N114HL	183N114HLW	Hex Nut (2 req.)
				Frame

*Not Shown